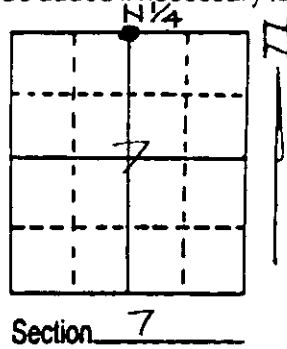


U.S. PUBLIC LAND SURVEY MONUMENT RECORD

Note: This form is intended and designed to fulfill all requirements of Wisconsin Administrative Code, Chapter A-E 7.08 U.S. Public Land Survey Monument Record (3) (a) (b) (c) (d) (e) (f) (g) (h) (i). An additional sheet may be added if necessary to conform with said requirements.

(a) Corner location: Township 38 North
 Range 7 East/West

Town/City/Village Lake Tomahawk
 County Oneida

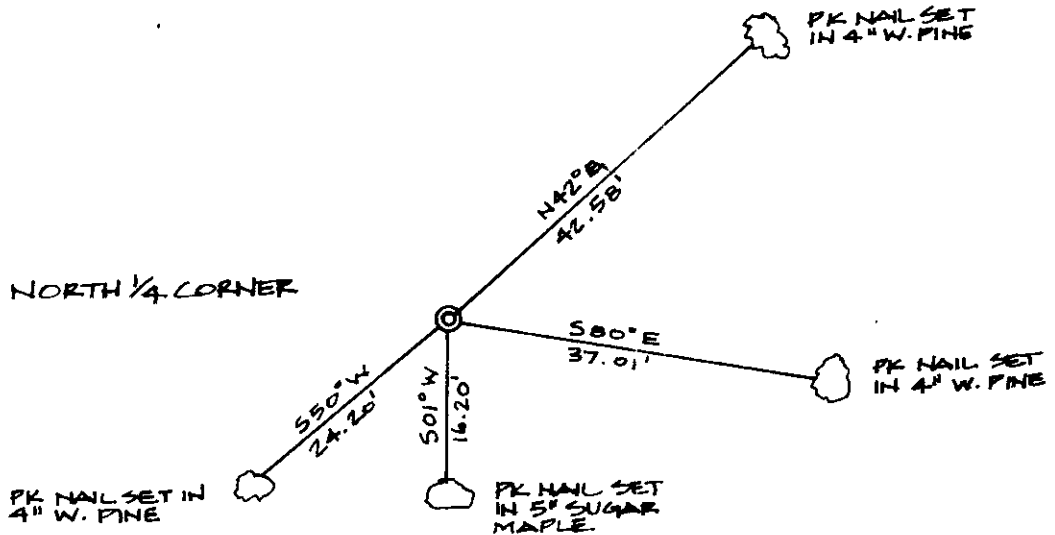


(b) (f) (g) (h) Description of monument found at this corner and if it was accepted, state all evidence (material, testimonial, occupational, plats, records, other monuments) used as a basis for accepting. If not accepted or if nothing was found, state evidence used as basis for establishing location. If reestablished through lost corner proportionate methods, indicate all monuments, distances and directions used to establish. Indicate type of monument found or set and sign post.

August, 1863: Alexander Anderson set a wood post: 7" Maple N33 $\frac{1}{4}$ °W, 29 Lks.; 7" Red Oak S60°W, 17 Lks.

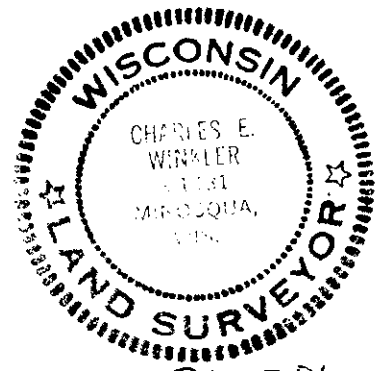
July 15, 1992: I found no evidence of the original or any subsequent survey. I set a 30" long Oneida County Aluminum Monument based on single proportionate measure. The Northeast Section Corner bears S87°42'17"E, 2631.86 feet; the Northwest Section Corner bears N87°42'17"W, 2618.71 feet. I established witnesses as shown below and set a plastic sign post Northeast, 1 foot.

(c) (d) (e) Plan view of corner with ties to at least 4 witness monuments. If in disagreement with previously established corner, show the distances between the two corners and also indicate the ties to the disputed corner.



(i) I, Charles E. Winkler, Reg. Land Surveyor
 (type or print name) certify that the corner location on this record was determined by me or under my direction and control and that this U.S. Public Land Survey Monument Record is correct and complete to the best of my knowledge and belief.

Charles E. Winkler 4/5/93
 Signature Inman-Foltz & Associates, Inc. Date



3807060020
Stamp

Index No. E-3