

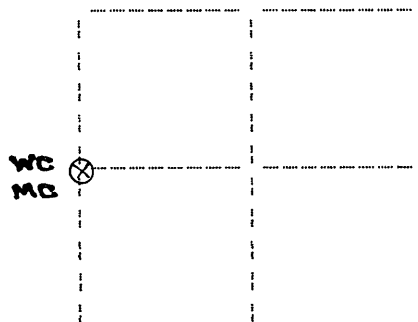
U.S. PUBLIC LAND SURVEY MONUMENT RECORD

Note: This form is intended and designed to fulfill all requirements of Wisconsin Administrative Code, Chapter A-E 7.08 U.S. Public Land Survey Monument Record(3)(a)(b)(c)(d)(e)(f)(g)(h)(i). An additional sheet may be added if necessary to conform with said requirements.

(a) Corner location: Township 38 North
Range 7 East

Town of Lake Tomahawk

Oneida County, Wisconsin



Section 5

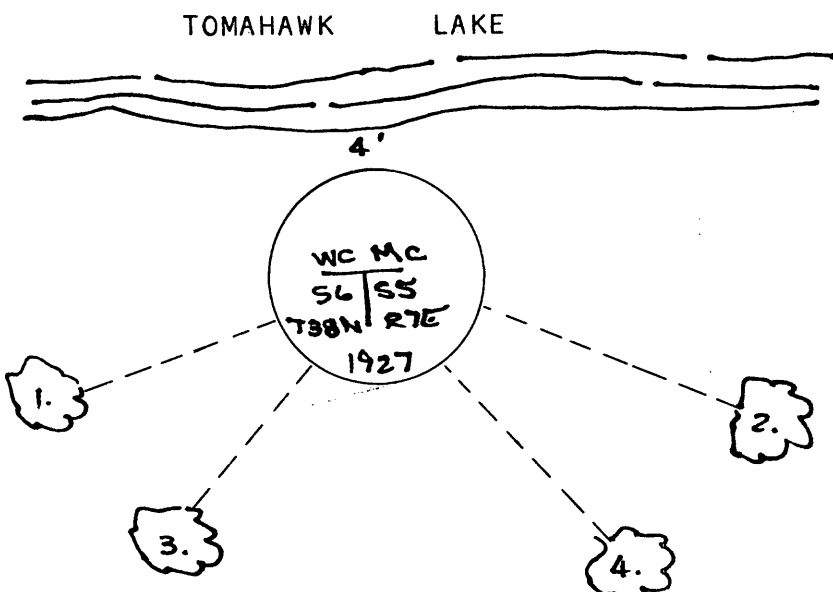
(b)(f)(g)(h) Description of monument found at this corner and if it was accepted, state all evidence (material, testimonial, occupational, plats, records, other monuments) used as a basis for accepting. If not accepted or if nothing was found, state evidence used as basis for establishing location. If reestablished through lost corner proportionate methods, indicate all monuments, distances and directions used to establish. Indicate type of monument found or set and sign post.

August, 1863: Alexander Anderson US deputy surveyor notes the following: 34.19 over tomahawk lake & set 1/4 sec post for meander corner: w.pine 24 S10W, 25 lks.; birch 8 S59E, 60 lks.

October 28, 1990: I found and accepted a 2" dia. iron post with GLO brass cap 10" above the ground marked as shown below. I found the following witnesses: old pine stump (anderson?) S85W, 13.5 feet; set nail in oak 7" S70W, 24.13 feet; set nail in oak 8" S68E, 11.02 feet; tomahawk lake north, 4 feet. I established the following witnesses: set nail in n.pine 5" S40W, 8.48 feet; set nail in maple 4" S43E, 27.27 feet; set plastic sign post south, 2 feet.

(c)(d)(e) Plan view of corner with ties to at least four witness monuments. If in disagreement with previously established corner, show the distances between the two corners and also indicate the ties to the disputed corner.

1. nail in oak 7" S70W, 24.13 feet.
 2. nail in oak 8" S68E, 11.02 feet.
 3. nail in n.pine 5" S40W, 8.48 feet.
 4. nail in maple 4" S43E, 27.27 feet.
- (not to scale)



I, Jeffrey W. Austin, Registered Land Surveyor S-1885 certify that the corner location on this record was determined by me or under my direction and control and that this U.S. Public Land Survey Monument Record is correct and complete to the best of my knowledge and belief.



Jeffrey W. Austin
Signature

October 30, 1990
Date

REGISTER OF DEEDS OFFICE
ONEIDA COUNTY, WIS.

FILED
NOV 2 1990

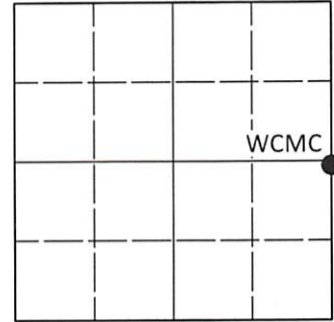
At _____ O'Clock _____ M
THOMAS H. LEIGHTON
REGISTER OF DEEDS

U.S. PUBLIC LAND SURVEY MONUMENT RECORD

Note: This form is intended and designed to fulfill all requirements of Wisconsin Administrative Code, Chapter A-E 7.08 U.S. Public Land Survey Monument Record (3)(a-i).

(a) CORNER LOCATION
 Wit. Meander Cor. of Secs. 5 & 6
 Township 38 North
 Range 7 East of the 4th P.M.
 Town of Lake Tomahawk
 County of Oneida

WISCRS - Oneida County
 N: 228,069.58 USft
 E: 202,347.66 USft
 Datum: NAD 83(2011) ep. 2010.00
 GNSS Method: RTN - Offset
 GNSS Control: WISCORS VRS



Sec. 6, T. 38 N., R. 7 E.

(b)(f)(g)(h) Description of monument found at this corner and if it was accepted, state all evidence (material, testimonial, occupational, plats, records, other monuments) used as a basis for accepting. If not accepted or if nothing was found, state evidence used as basis for establishing location. If re-established through lost corner proportionate methods, indicate all monuments, distances and directions used to establish. Indicate type of monument and sign post found or set.

This record is a perpetuation of the following land corner document(s):

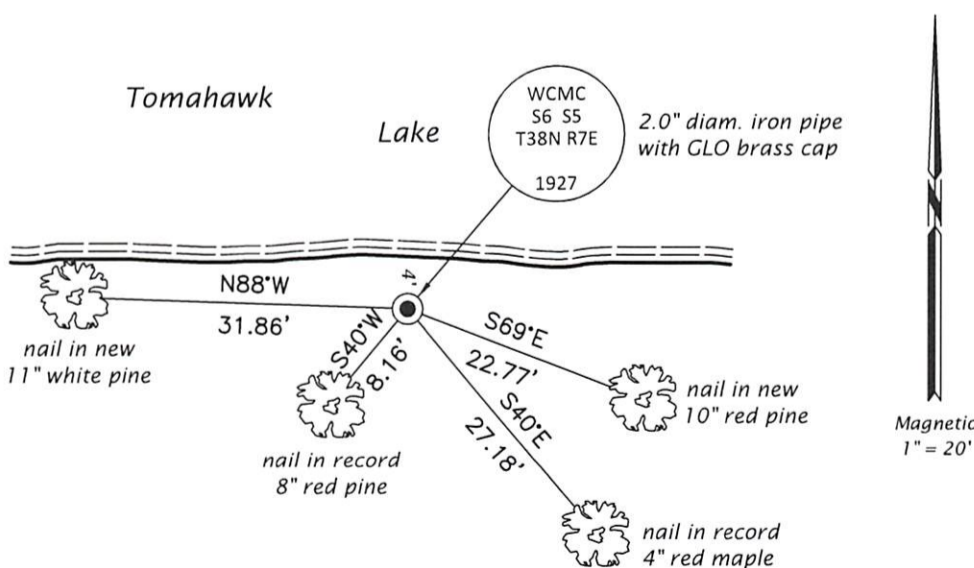
October 30, 1990: USPLS Monument Record by Jeffrey W. Austin, filed in Oneida County

A complete history of the corner can be found on the previous land corner document(s). I accept the record activity as a true and faithful perpetuation or reestablishment of the original corner location and further perpetuate it as described below.

April 10, 2022: I found and accepted the record monument, a 2.0" diam. iron pipe, firmly set, with a 2.5" diam. GLO brass cap projecting 12" above a ring of stone. The record bearing trees at S70°W and S68°E have been cut by beaver. I found or established accessories as indicated below. I found a white vinyl sign post bearing South, 1.9 ft.

The coordinate value shown has been determined by traversing from two or more GNSS offset points satisfying the accuracy requirements defined and qualified in the 2022 Oneida County Fee Schedule for USPLS Corners.

(c)(d)(e) Plan view of corner with ties to at least 4 witness monuments. If in disagreement with previously established corner, show the distances between the two corners and also indicate the ties to the disputed.




REGISTER OF DEEDS OFFICE
 ONEIDA COUNTY
 FILED

AUG 02 2022

KYLE J. FRANSON
 REGISTER OF DEEDS

(i) I, Jeffrey W. Austin, Professional Land Surveyor No. S-1885, hereby certify that the corner location on this record was determined by me or under my direction and control and that this U.S. Public Land Survey Monument Record is correct and complete to the best of my knowledge and belief.


Date
JULY 2, 2022