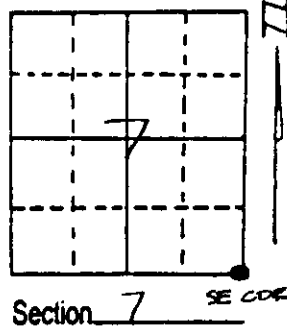


U.S. PUBLIC LAND SURVEY MONUMENT RECORD

Note: This form is intended and designed to fulfill all requirements of Wisconsin Administrative Code, Chapter A-E 7.08 U.S. Public Land Survey Monument Record (3) (a) (b) (c) (d) (e) (f) (g) (h) (i). An additional sheet may be added if necessary to conform with said requirements.

(a) Corner location: Township 38 North
 Range 7 East/West



Town/City/Village Lake Tomahawk
 County Oneida

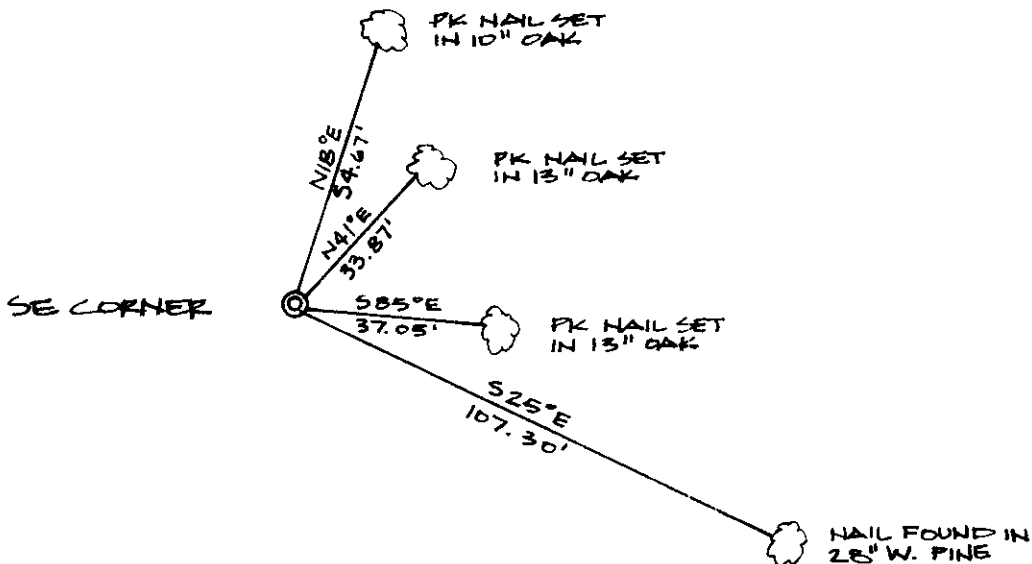
(b) (f) (g) (h) Description of monument found at this corner and if it was accepted, state all evidence (material, testimonial, occupational, plats, records, other monuments) used as a basis for accepting. If not accepted or if nothing was found, state evidence used as basis for establishing location. If reestablished through lost corner proportionate methods, indicate all monuments, distances and directions used to establish. Indicate type of monument found or set and sign post.

August, 1863: Alexander Anderson set a wood post: 12" Birch N80°E, 39 Lks.; 10" Aspen N33°W, 17 Lks.

DNR Corner Notes: Brass capped iron pipe: 8"W. Birch S5°W, 14.5'; 16" W. Pine STP. N4°E, 34.2'.

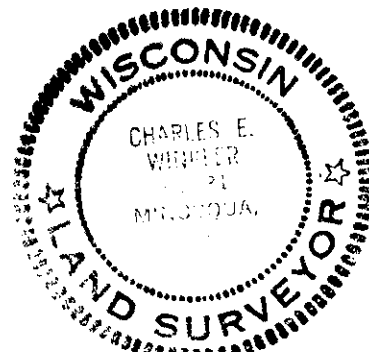
August 5, 1992: I found and accepted a 2" iron pipe with WCD brass cap. I established witnesses as shown below and set a plastic sign post Northwest, 1 foot.

(c) (d) (e) Plan view of corner with ties to at least 4 witness monuments. If in disagreement with previously established corner, show the distances between the two corners and also indicate the ties to the disputed corner.



(i) I, Charles E. Winkler, Reg. Land Surveyor
 (type or print name) certify that the corner location on this record was determined by me or under my direction and control and that this U.S. Public Land Survey Monument Record is correct and complete to the best of my knowledge and belief.

Charles E. Winkler 4/5/93
 Signature Inman-Foltz & Associates, Inc. Date



Stamp

Index No. 3-5
 3807070000