

U.S. PUBLIC LAND SURVEY MONUMENT RECORD

Note: This form is intended and designed to fulfill all requirements of Wisconsin Administrative Code, Chapter A-E 7.08 U.S. Public Land Survey Monument Record (3) (a) (b) (c) (d) (e) (f) (g) (h) (i). An additional sheet may be added if necessary to conform with said requirements.

(a) Corner location: Township 38 North Corner: West 1/4

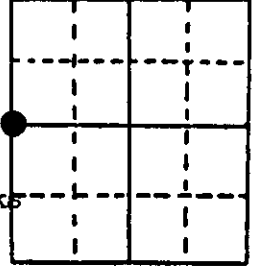
Section 9 Range 7 East Original Surveyor: Anderson/GLO

Town/City/Village Town of Lake Tomahawk

Original B.T.'s: 14" A N83°W 23 lks
14" A S88.5°E 20 lks

County Oneida

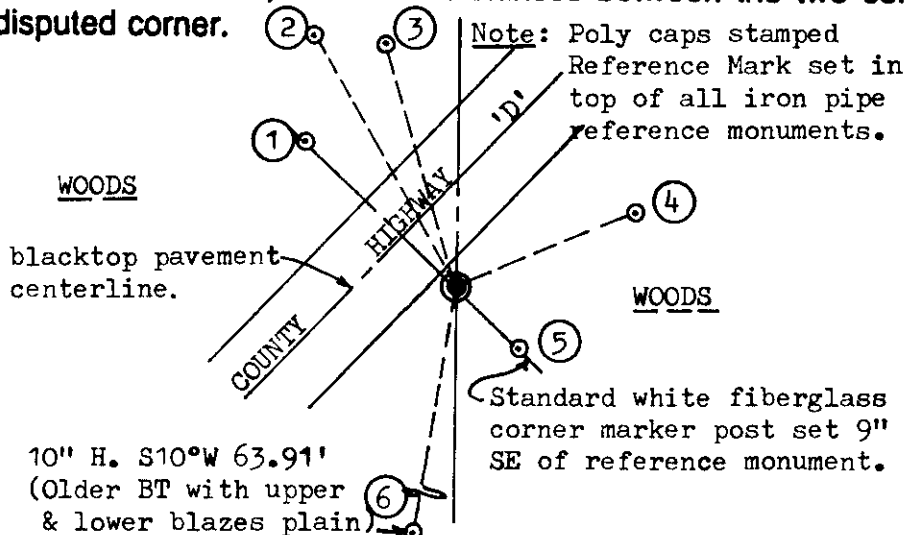
Original Survey Date: August 1863 ● Location



(b) (f) (g) (h) Description of monument found at this corner and if it was accepted, state all evidence (material, testimonial, occupational, plats, records, other monuments) used as a basis for accepting. If not accepted or if nothing was found, state evidence used as basis for establishing location. If reestablished through lost corner proportionate methods, indicate all monuments, distances and directions used to establish. Indicate type of monument found or set and sign post.

Found and accepted standard 2" iron pipe monument with stamped WCD brass cap 16" below road shoulder surface at corner; monument also located 4' SE of southeasterly edge of the black top pavement for CTH 'D'. At an earlier date, Hassler noted an old post at corner and new BT 15" H. S06°E 33 lks and now a sawed off 28" H. stump, and his 7" BT Bw S69°E 23 lks now gone. Both GLO Aspen BTs are now gone. In 1936, Hassler & Bentz perpetuated old post at the corner with a new square wood post, scribed, painted green and 23 lks SE of CTH 'D' pavement centerline; and noted his previous BTs as 12" Bw N67°E 25.4 lks and 20" H. South 38.7 lks. In 1965, Ilg/WCD found wood post with iron pipe at corner on southerly side of CTH 'D' for his partial subdivision survey of Section 9 per plat of survey in Wisconsin DNR records at Trout Lake office. In 1984, Seymour/DNR noted a standard 2" iron pipe with WCD brass cap 12" below grade at corner and new BTs 8" H. S07°W 63.88' found and used for new ties below; 10" Bw S85°W 72.60' now a sawed off 12" stump and a 12" H. N27°W 59.98' found and used for new ties below. Iron pipes for witness ties 4 and 5 were set by Vissers/DNR in September 1996; I set iron pipes for new witness ties 1 and 3 on October 11, 1996 to complete this recovery. No witnesses present.

(c) (d) (e) Plan view of corner with ties to at least 4 witness monuments. If in disagreement with previously established corner, show the distances between the two corners and also indicate the ties to the disputed corner.

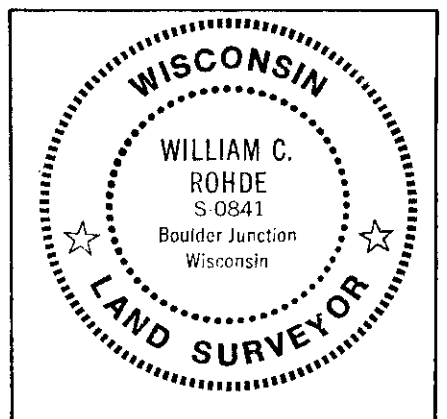


Witness Monument Ties:

- ① 1" dia. iron pipe reference monuments set on right line
- ⑤ thru corner monument center bearing N45°W 44.44' & S45°E 17.94'.
- ② 10" H. N30°W 59.90' (Older BT with upper & lower face blazes plain)
- ③ 1" dia. iron pipe reference monument set N16°W 53.06' &
- ④ N68°E 40.18'.

Unless otherwise indicated, all BT witness monument ties are to a 1/4" dia. by 2.5" long PK nail with 1.25" dia. steel washer set in unblazed right face bark; and a PK nail with 2" dia. steel washer stamped BT also set in unblazed front face bark of each BT at DBH. All previous corner recovery notes from Wisconsin DNR and/or Oneida County survey records.

Scale: 1" = 40'



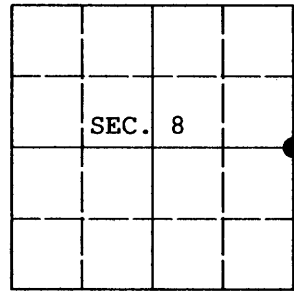
(i) I, William C. Rohde, RLS 841
(type or print name) certify that the corner location on this record was determined by me or under my direction and control and that this U.S. Public Land Survey Monument Record is correct and complete to the best of my knowledge and belief.

William C. Rohde 10/21/96
Signature Date

U.S. PUBLIC LAND SURVEY MONUMENT RECORD

Note: This form is intended and designed to fulfill all requirements of Wisconsin Administrative Code, Chapter A-E 7.08 U.S. Public Land Survey Monument Record (3) (a) (b) (c) (d) (e) (f) (g) (h) (i). An additional sheet may be added if necessary to conform with said requirements.

(a) CORNER LOCATION: Plane Coordinates
 1/4 Cor. of Secs. 8 & 9 X:
 Township 38 North Y:
 Range 7 East of the 4th P.M. Datum:
 Town of Lake Tomahawk County of Oneida



(b) HISTORY OF ORIGINAL CORNER ESTABLISHMENT

Original Surveyor: Alexander Anderson Original Accessories:
 Date of Survey: Commenced August 1863 aspen 14" N.83°W., 23 lks.
 Completed August 1863 aspen 14" S.88-1/2°E., 20 lks.

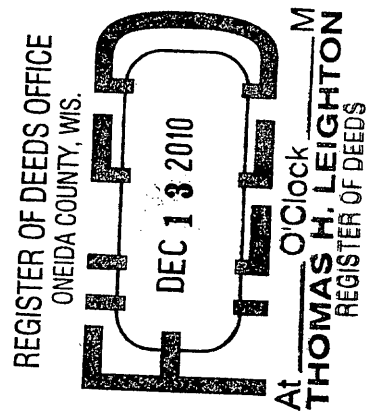
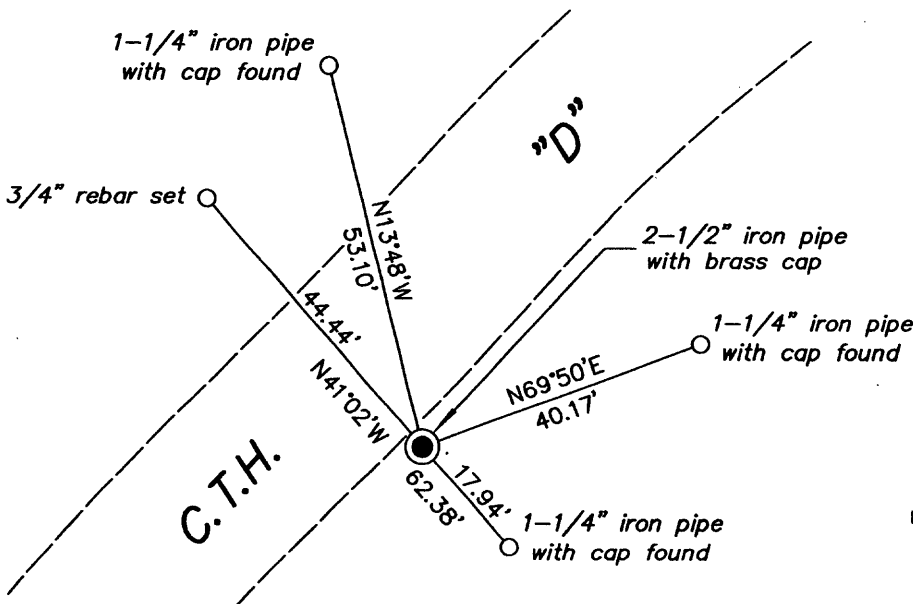
(b) (f) (g) (h) Description of monument found at this corner and if it was accepted, state all evidence (material, testimonial, occupational, plats, records, other monuments) used as a basis for accepting. If not accepted or if nothing was found, state evidence used as basis for establishing location. If re-established through lost corner proportionate methods, indicate all monuments, distances and directions used to establish. Indicate type of monument and sign post found or set.

NOTE: This is a perpetuation of a previous USPLS Monument Record by William C. Rohde, RLS dated October 21, 1996 and filed in the office of the Oneida County Register of Deeds. A complete history of the corner can be found on the previous monument record. I accept the previous location as a true and faithful perpetuation or reestablishment of the original corner location and further perpetuate it as follows.

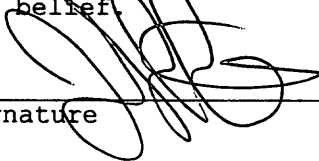
May 14, 2010: I found and accepted Rohde's monument, a 2-1/2 ins. diam. iron pipe with WCD brass cap 24 ins. beneath the shoulder. I could not find Rohde's reference monument at N45°W, so I set another in its place. I found or established accessories as shown below and found a white plastic sign post adjacent to the southeast reference monument.

August 18, 2010: After the highway paving project, I recovered Rohde's monument and determined it to be undisturbed.

(c) (d) (e) Plan view of corner with ties to at least 4 witness monuments. If in disagreement with previously established corner, show the distances between the two corners and also indicate the ties to the disputed.



(i) I, Jeffrey W. Austin, Registered Land Surveyor No. S-1885, hereby certify upon honor that the corner location on this record was determined by me or under my direction and control and that this U.S. Public Land Survey Monument Record is correct and complete to the best of my knowledge and belief.

Signature  Date Oct. 28, 2010