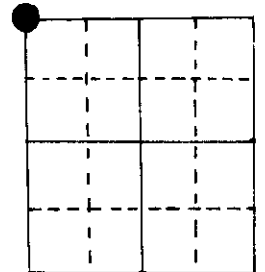


U.S. PUBLIC LAND SURVEY MONUMENT RECORD

Note: This form is intended and designed to fulfill all requirements of Wisconsin Administrative Code, Chapter A-E 5.02, U.S. Public Land Survey Monument Record (3) (a) (b) (c) (d) (e) (f) (g) (h) (i). An additional sheet may be added if necessary to conform with said requirements.

(a) Corner location: Township 38 North
 Range 7 East ~~West~~
 Town/City ~~Orange~~ Lake Tomahawk
 County Oneida



Section 15

(b) (f) (g) (h) Description of monument found at this corner and if it was accepted, state all evidence (material, testimonial, occupational, plats, records, other monuments) used as a basis for accepting. If not accepted or if nothing was found, state evidence used as basis for establishing location. If reestablished through lost corner proportionate methods, indicate all monuments, distances and directions used to establish.

Original by A. Anderson, 1863, OBT's PW 24" N66°E 931ks., PW 12" S73°E 52 lks.

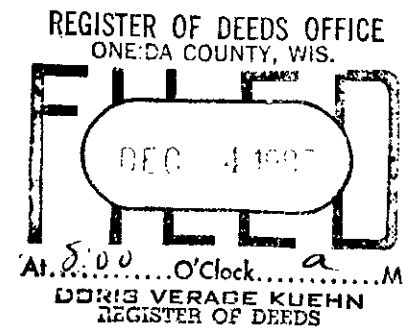
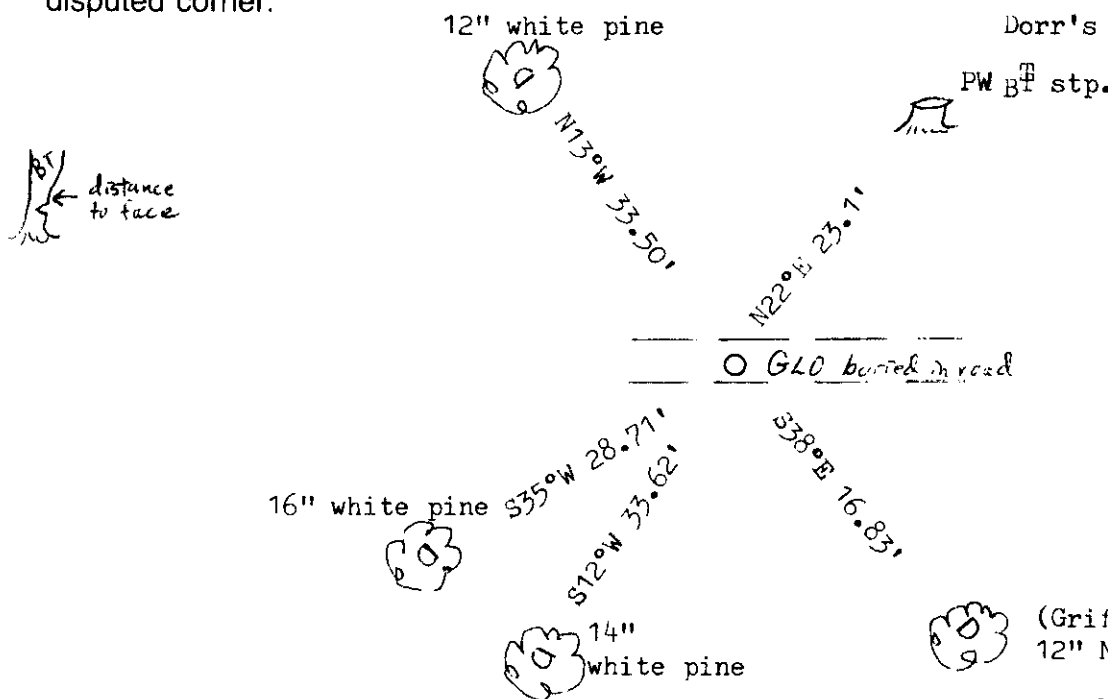
1928, Cook (GLO), found orig. BT's and set GLO brass cap in place of orig. stake.
 Made BT's PY 11" N62°E .255 lks., PW 14" S35½°W .435 lks.

B.F. Dorr (no date) & D.H. Vaughn (1908) were both at this location and found OB T's.

H.C. Hall, 1928, found brass cap and lowered it 18" because of road construction.

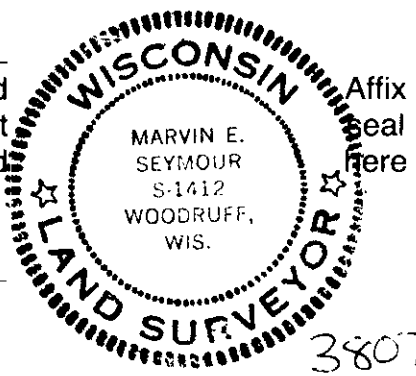
1964, J. Griffin, found brass cap and 2 BT's. Made BT PN 4" S29°E 16.8'

(c) (d) (e) Plan view of corner with ties to at least 4 witness monuments. If in disagreement with previously established corner, show the distances between the two corners and also indicate the ties to the disputed corner.



(i) I, Marvin E. Seymour
 (type or print name) certify that the corner location on this record was determined by me or under my direction and control and that this U.S. Public Land Survey Monument Record is correct and complete to the best of my knowledge and belief.

Marvin E. Seymour Dec 3, 1987
 Signature Date



U.S. PUBLIC LAND SURVEY MONUMENT RECORD

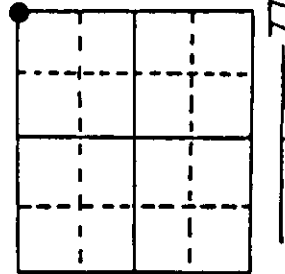
Note: This form is intended and designed to fulfill all requirements of Wisconsin Administrative Code, Chapter A-E 7.08 U.S. Public Land Survey Monument Record (3) (a) (b) (c) (d) (e) (f) (g) (h) (i). An additional sheet may be added if necessary to conform with said requirements.

(a) Corner location: Township 38 North

Range 7 East/West

Town/Village Lake Tomahawk

County Oneida

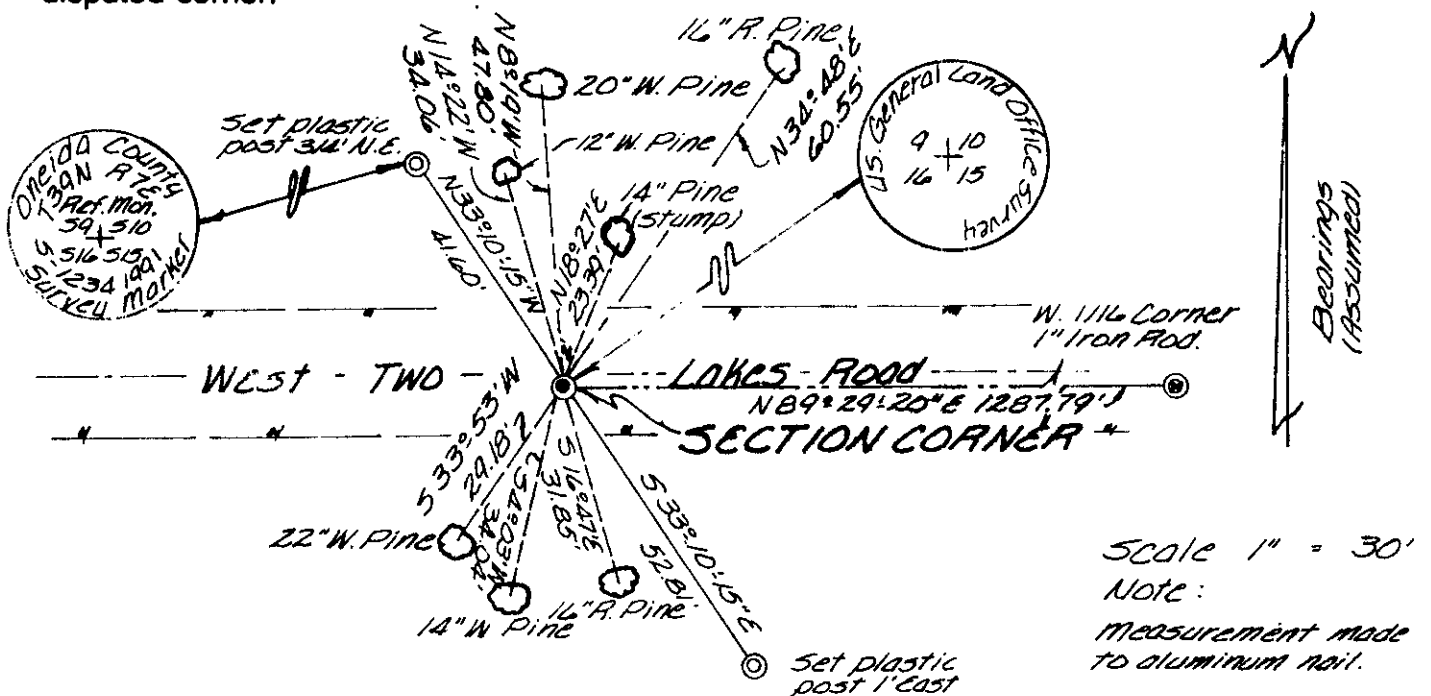


Section 15

(b) (f) (g) (h) Description of monument found at this corner and if it was accepted, state all evidence (material, testimonial, occupational, plats, records, other monuments) used as a basis for accepting. If not accepted or if nothing was found, state evidence used as basis for establishing location. If reestablished through lost corner proportionate methods, indicate all monuments, distances and directions used to establish. Indicate type of monument found or set and sign post.

- Aug. 1863; A. Anderson (Deputy Surveyor) set Sect. Cor. Bearing Trees: White Pine 24" N66°E 93 Lks, White Pine 12" S73°E 52 Lks.
 - 1928 Cook (GLO) found orig. BT's and set GLO brass cap in place of orig. stake. Made BT's Yellow Pine 11" N62°E .255 Lks, White Pine 14" S35 1/2°W .435 Lks.
 - B.F. Dorr & D.H. Vaughn(1908) were at this location and found Orig. BT's.
 - 1928 H.C. Hall found brass cap and lowered it 18" because of road const.
 - 1964 J. Griffin found brass cap and 2 BT's. Made BT Norway Pine 4" S29°E 16.8'
 - 1987 Marvin Seymour found GLO monument and filed U.S.P.L.S. monument record Dec. 4th, 1987.
 - April 1991; James D. Rein found 2 1/2" brass tablet down 23", and set 3/4" I.P. over monument. Also set 2 Oneida County Aluminum Ref. Mon. (see detailed sketch below). Note: All BT's shown hereon are existing BT's.
- = 3/4" Iron Pipe set.
 ⊙ = Oneida County Aluminum Monument set.

(c) (d) (e) Plan view of corner with ties to at least 4 witness monuments. If in disagreement with previously established corner, show the distances between the two corners and also indicate the ties to the disputed corner.



(i) I, James D. Rein, Registered Land Surveyor S-1234
 (type or print name) certify that the corner location on this record was determined by me or under my direction and control and that this U.S. Public Land Survey Monument Record is correct and complete to the best of my knowledge and belief.

Signature James D. Rein Date Sept. 24th, 1991



Stamp 380709000