

U.S. PUBLIC LAND SURVEY MONUMENT RECORD

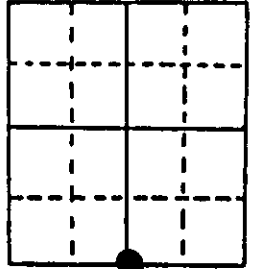
Note: This form is intended and designed to fulfill all requirements of Wisconsin Administrative Code, Chapter A-E 7.08 U.S. Public Land Survey Monument Record (3) (a) (b) (c) (d) (e) (f) (g) (h) (i). An additional sheet may be added if necessary to conform with said requirements.

(a) Corner location: Township 38 North Corner: South 1/4

Section 9 Range 7 East Original Surveyor: Anderson/GLO

Town/City/Village Town of Lake Tomahawk Original B.T.'s: 10" Fir N7.5°W 77 lks and 10" Mr S58°W 18 lks.

County Oneida

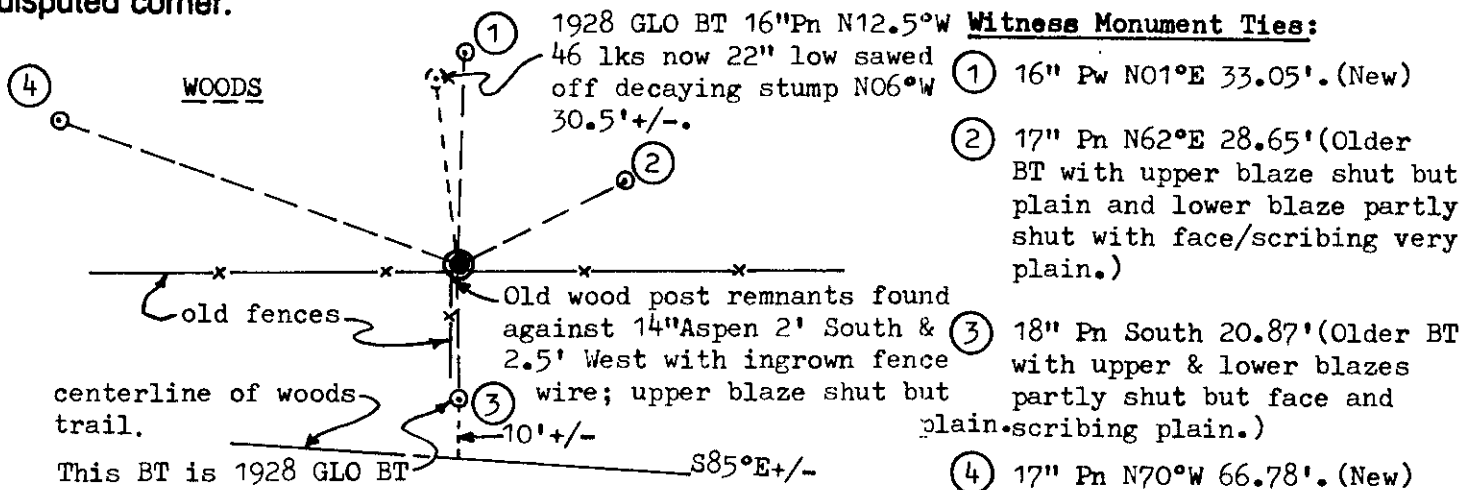


Original Survey Date: August 1863 ● Location

(b) (f) (g) (h) Description of monument found at this corner and if it was accepted, state all evidence (material, testimonial, occupational, plats, records, other monuments) used as a basis for accepting. If not accepted or if nothing was found, state evidence used as basis for establishing location. If reestablished through lost corner proportionate methods, indicate all monuments, distances and directions used to establish. Indicate type of monument found or set and sign post.

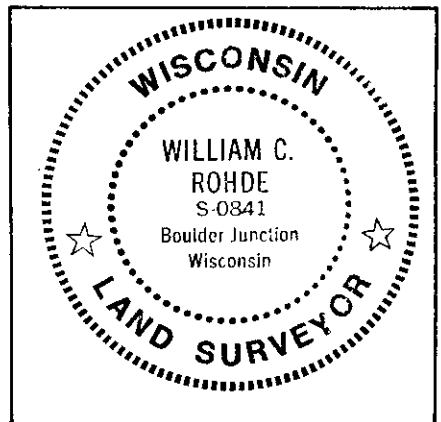
Found and accepted 1.5" dia. iron pipe monument with stamped GLO cap 8" above grade at this corner location. In 1908, Vaughn could not find GLO post or BTs, so he set a new post by single proportion between SE corner of Section 9 and East MC for Big Carr Lake on south line of section, and marked new BTs 10" Pw N04°W 31.5 lks and 9" Py S02°E 46 lks which are now both gone. In 1929, Hall noted old wood post at corner and new BTs 11" Pn N68°E 30' & 12" Pn S05°E 20' which generally fit older BTs found NE and South for new ties below. In 1920's Hassler found old wood post at corner and noted new BTs 11" Pn N68°E 30' and 12" Pn S05°E 20', which are same BTs noted by Hall in 1929. In 1928-29, Cook/GLO during a survey examination in Section 16, found a 3" sq. wood post 2 ft. above grade and marked 1/4S at this corner location, and reset corner with a standard iron pipe monument with stamped GLO cap; Cook noted that I.P. monument was 36" long into ground and that a 5 strand fence line ran East & West thru the corner location. Cook found no trace of original GLO BTs and noted local BTs 12" Pn S11.25°E 32 lks and 16" Pn N12.5°W 46 lks; and both scribed 1/4S BT. In 1965, Ilg/WCD found GLO iron pipe monument at corner and noted older BTs 18" Pn S03°E 31.0 links and 16" Pn N59°E 42.6 links which also fit new ties to older BTs below. In 1979, Fisher noted GLO monument and same BTs as 16" Pn South 20.7' and 14" Pn N64°E 28.4'. This corner recovery completed October 16, 1996; no witnesses present. Old wood post was found.

(c) (d) (e) Plan view of corner with ties to at least 4 witness monuments. If in disagreement with previously established corner, show the distances between the two corners and also indicate the ties to the disputed corner.



Unless otherwise indicated, all BT witness monument ties are to a 1/4" dia. by 2.5" long PK nail with 1.25" dia. steel washer set in unblazed right face bark; and a PK nail with 2" dia. steel washer stamped BT also set in unblazed front face bark of each BT at DBH. All previous corner recovery notes from Wisconsin DNR and/or Oneida County survey records.

Scale: 1" = 30'



(i) I, William C. Rohde, RLS 841
 (type or print name) certify that the corner location on this record was determined by me or under my direction and control and that this U.S. Public Land Survey Monument Record is correct and complete to the best of my knowledge and belief.

Signature *William C. Rohde* Date 10/21/96

Index No. 411