

U.S. PUBLIC LAND SURVEY MONUMENT RECORD

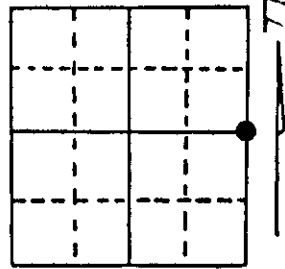
Note: This form is intended and designed to fulfill all requirements of Wisconsin Administrative Code, Chapter A-E 7.08 U.S. Public Land Survey Monument Record (3) (a) (b) (c) (d) (e) (f) (g) (h) (i). An additional sheet may be added if necessary to conform with said requirements.

(a) Corner location: Township 38 North

Range 7 East/West

Town/City/Village Lake Tomahawk

County Oneida



Section 9

(b) (f) (g) (h) Description of monument found at this corner and if it was accepted, state all evidence (material, testimonial, occupational, plats, records, other monuments) used as a basis for accepting. If not accepted or if nothing was found, state evidence used as basis for establishing location. If reestablished through lost corner proportionate methods, indicate all monuments, distances and directions used to establish. Indicate type of monument found or set and sign post.

Original 1/4 corner between sections 9-10 set by Alexander Anderson Aug. 1863.

Located by R.R. Dorr Nov. 1893 no Bts. listed.

DNR. Notes - R.R. spike set in blackton proportioned from Vaughans distances to the 1/4 corners located N89 of E cor.

New Bts. Oak 20' S 40' W, 4.22' ch.

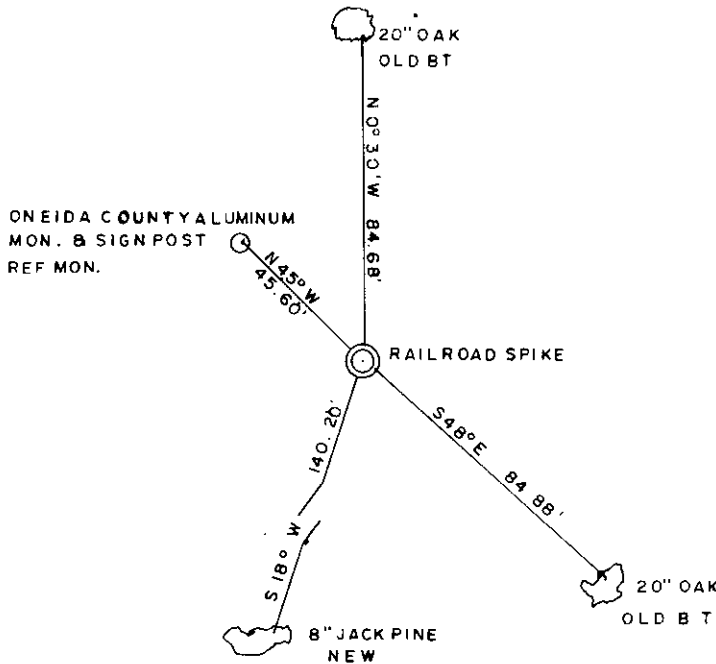
Oak 20' N 0' 30' W, 4.22' ch.

Jan. 15, 1890 DNR. Located RR. Spike found in place

Located by James M. Meruandt June 3, 1878 corr. 575

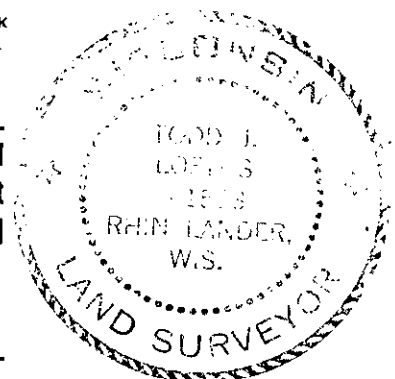
We found RR. Spike and Oak Bts. Aug. 12, 1889

(c) (d) (e) Plan view of corner with ties to at least 4 witness monuments. If in disagreement with previously established corner, show the distances between the two corners and also indicate the ties to the disputed corner.



(i) I, Todd Loftus
 (type or print name) certify that the corner location on this record was determined by me or under my direction and control and that this U.S. Public Land Survey Monument Record is correct and complete to the best of my knowledge and belief.

Todd Loftus Signature 10/15/83 Date



Index No. G-13

3807092000

U.S. PUBLIC LAND SURVEY MONUMENT RECORD

Note: This form is intended and designed to fulfill all requirements of Wisconsin Administrative Code, Chapter A-E 7.08 U.S. Public Land Survey Monument Record (3) (a) (b) (c) (d) (e) (f) (g) (h) (i). An additional sheet may be added if necessary to conform with said requirements.

(a) Corner location: Township 38 North Corner: East 1/4

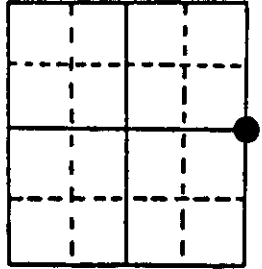
Section 9 Range 7 East Original Surveyor: Anderson/GLO

Town/City/Village Lake Tomahawk

Original B.T.'s: 10" M N42°W 7 lks
10" B S48.5°E 10 lks

County Oneida

Original Survey Date: August 1863 ● Location



(b) (f) (g) (h) Description of monument found at this corner and if it was accepted, state all evidence (material, testimonial, occupational, plats, records, other monuments) used as a basis for accepting. If not accepted or if nothing was found, state evidence used as basis for establishing location. If reestablished through lost corner proportionate methods, indicate all monuments, distances and directions used to establish. Indicate type of monument found or set and sign post.

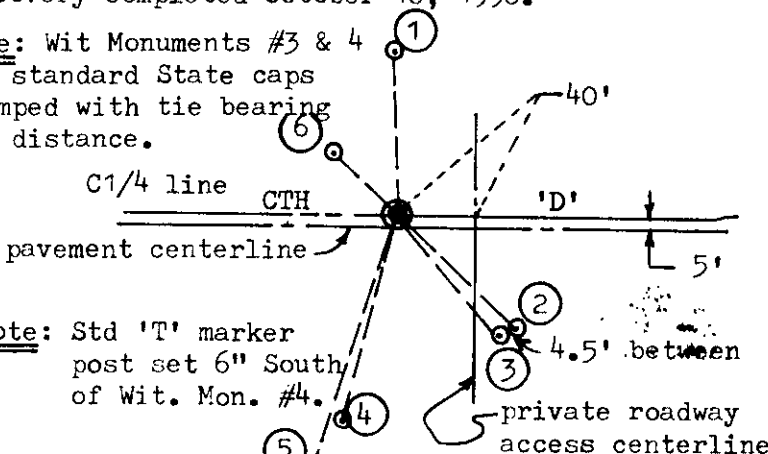
Found and accepted an old 1.25" dia. iron pipe monument undisturbed 19" below existing blacktop pavement at corner location. RR spike at corner per 1988 record ties by Loftus was not found. Both OBTs are now obliterated. In 1893, Dorr ran E/W quarter line of Section 10 and notes a post by 'X' at corner; no BT notes. In 1918, Vaughn ran E/W quarter lines of Section 9 and 10 and notes an iron pipe at C1/4 of Section 10 and Dorr's post at CE1/16 which he doubled East on a right line to set a post at East 1/4 of Section 10; Vaughn then extended same right line West 39.93 chains west of C1/4 corner pipe found and set a post for West 1/4 corner of Section 10, and marked a 12" Pw stump S54.5°E 81 lks, now gone. In 1929, Hall notes an iron pipe monument found at C1/4 and East 1/4 of Section 10; in 1936, Hassler east line of Section 9 and notes 1/4 corner in roadway (CTH D) but no BTs. In 1965, Ilg/WCD set a RR spike in road for this 1/4 corner by single proportion between Vaughn's 1/8 corners & fences to north and south, and noted that corner fell 6.6 lks (4.4') north of road centerline, and marked new BTs: 20" Or S48°E 1.286 chains (84.9') and 20" Or N03°W 1.283 ch (84.7'), both found and used for new ties below; BT ties by Ilg best fit the iron pipe that was found below roadway pavement at this corner, so accepted it as the best evidence. In September 1996, Vissers/DNR also found iron pipe at corner and assisted recovery.

(c) (d) (e) Plan view of corner with ties to at least 4 witness monuments. If in disagreement with previously established corner, show the distances between the two corners and also indicate the ties to the disputed corner.

Witness Monument Ties:

Recovery completed October 16, 1996.

Note: Wit Monuments #3 & 4 are standard State caps stamped with tie bearing and distance.



- ① RR spike in East face of 23" Or Record BT N01°W 85.36'.
- ② 28" Or Record BT S45°E 84.9'.
- ③ Standard cast alum monument set S39°E 82.32'.
- ④ Standard cast aluminum monument set S16°W 111.25'.
- ⑤ 8" Pj Record BT S18°W 140.20' fd but not used for new ties.
- ⑥ Standard cast aluminum monument found with Oneida Co. cap N45°W 46.90'; also Std T post 4" North.

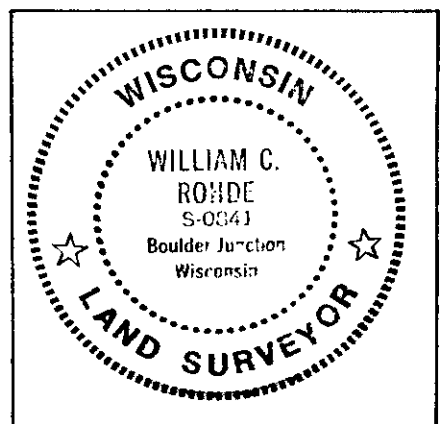
Unless otherwise indicated, all BT witness monument ties are to a 1/4" dia. by 2.5" long PK nail with 1.25" dia. steel washer set in unblazed right face bark; and a PK nail with 2" dia. steel washer stamped BT also set in unblazed front face bark of each BT at DBH. All previous corner recovery notes from Wisconsin DNR and/or Oneida County survey records.

Scale: 1"=100'

(i) I, William C. Rohde, RLS 841
(type or print name) certify that the corner location on this record was determined by me or under my direction and control and that this U.S. Public Land Survey Monument Record is correct and complete to the best of my knowledge and belief.

William C. Rohde
Signature

March 27, 1997
Date



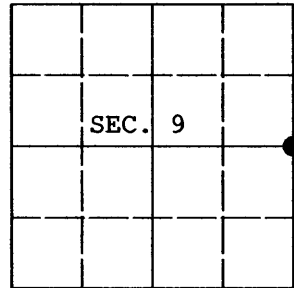
Index No. 613

3807092000

U.S. PUBLIC LAND SURVEY MONUMENT RECORD

Note: This form is intended and designed to fulfill all requirements of Wisconsin Administrative Code, Chapter A-E 7.08 U.S. Public Land Survey Monument Record (3) (a) (b) (c) (d) (e) (f) (g) (h) (i). An additional sheet may be added if necessary to conform with said requirements.

(a) CORNER LOCATION: Plane Coordinates
 1/4 Cor. of Secs. 9 & 10 X:
 Township 38 North Y:
 Range 7 East of the 4th P.M. Datum:
 Town of Lake Tomahawk County of Oneida



(b) HISTORY OF ORIGINAL CORNER ESTABLISHMENT

Original Surveyor: Alexander Anderson Original Accessories:
 Date of Survey: Commenced August 1863 maple 10" N.42°W., 7 lks.
 Completed August 1863 birch 10" S.48-1/2°E., 10 lks.

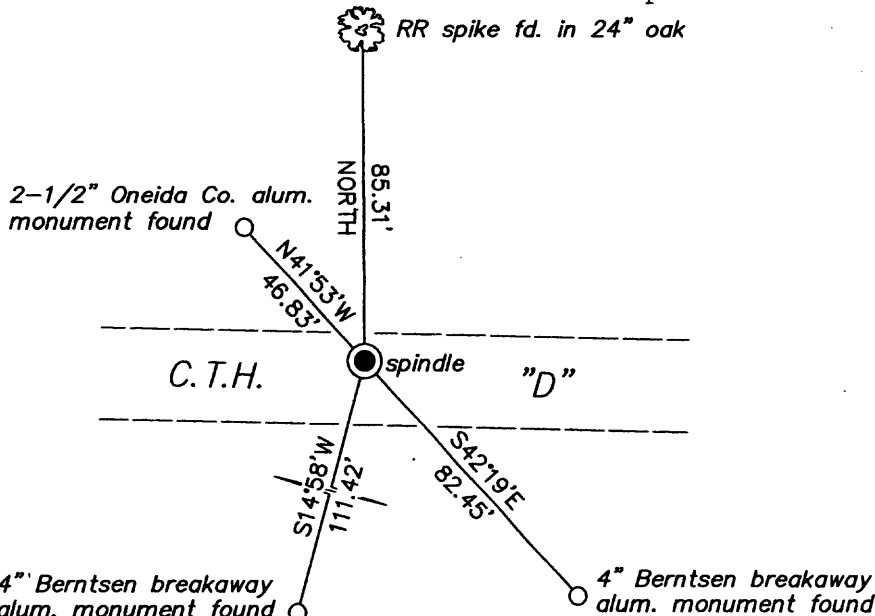
(b) (f) (g) (h) Description of monument found at this corner and if it was accepted, state all evidence (material, testimonial, occupational, plats, records, other monuments) used as a basis for accepting. If not accepted or if nothing was found, state evidence used as basis for establishing location. If re-established through lost corner proportionate methods, indicate all monuments, distances and directions used to establish. Indicate type of monument and sign post found or set.

NOTE: This is a perpetuation of a previous USPLS Monument Record by William C. Rohde, RLS dated March 27, 1997 and filed in the office of the Oneida County Register of Deeds. A complete history of the corner can be found on the previous monument record. I accept the previous location as a true and faithful perpetuation or reestablishment of the original corner location and further perpetuate it as follows.

May 14, 2010: I found and accepted a PK nail at Rohde's corner point. I found accessories as shown below and found a white plastic sign post adjacent to the northwest reference monument.

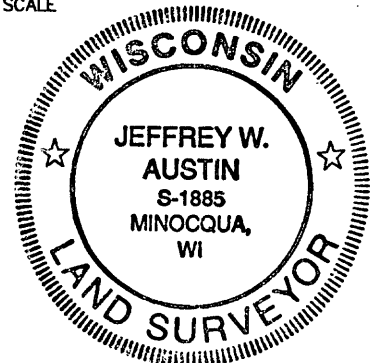
August 18, 2010: After the highway paving project, I set a cotton picker spindle at the corner point.

(c) (d) (e) Plan view of corner with ties to at least 4 witness monuments. If in disagreement with previously established corner, show the distances between the two corners and also indicate the ties to the disputed.



REGISTER OF DEEDS OFFICE
 ONEIDA COUNTY, WIS.
 DEC 18 2010
 At O'Clock
 THOMAS H. LEIGHTON
 REGISTER OF DEEDS

NO SCALE



(i) I, Jeffrey W. Austin, Registered Land Surveyor No. S-1885, hereby certify upon honor that the corner location on this record was determined by me or under my direction and control and that this U.S. Public Land Survey Monument Record is correct and complete to the best of my knowledge and belief.

Signature

OCT. 28, 2010
 Date