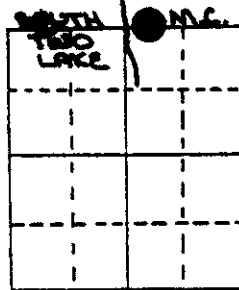


# U.S. PUBLIC LAND SURVEY MONUMENT RECORD

Note: This form is intended and designed to fulfill all requirements of Wisconsin Administrative Code, Chapter A-E 5.02, U.S. Public Land Survey Monument Record (3) (a) (b) (c) (d) (e) (f) (g) (h) (i). An additional sheet may be added if necessary to conform with said requirements.

(a) Corner location: Township 38 North  
 Range 7 East/~~West~~  
 Town/City/Village Lake Tomahawk Township  
 County Oneida County



Section 15

(b) (f) (g) (h) Description of monument found at this corner and if it was accepted, state all evidence (material, testimonial, occupational, plats, records, other monuments) used as a basis for accepting. If not accepted or if nothing was found, state evidence used as basis for establishing location. If reestablished through lost corner proportionate methods, indicate all monuments, distances and directions used to establish.

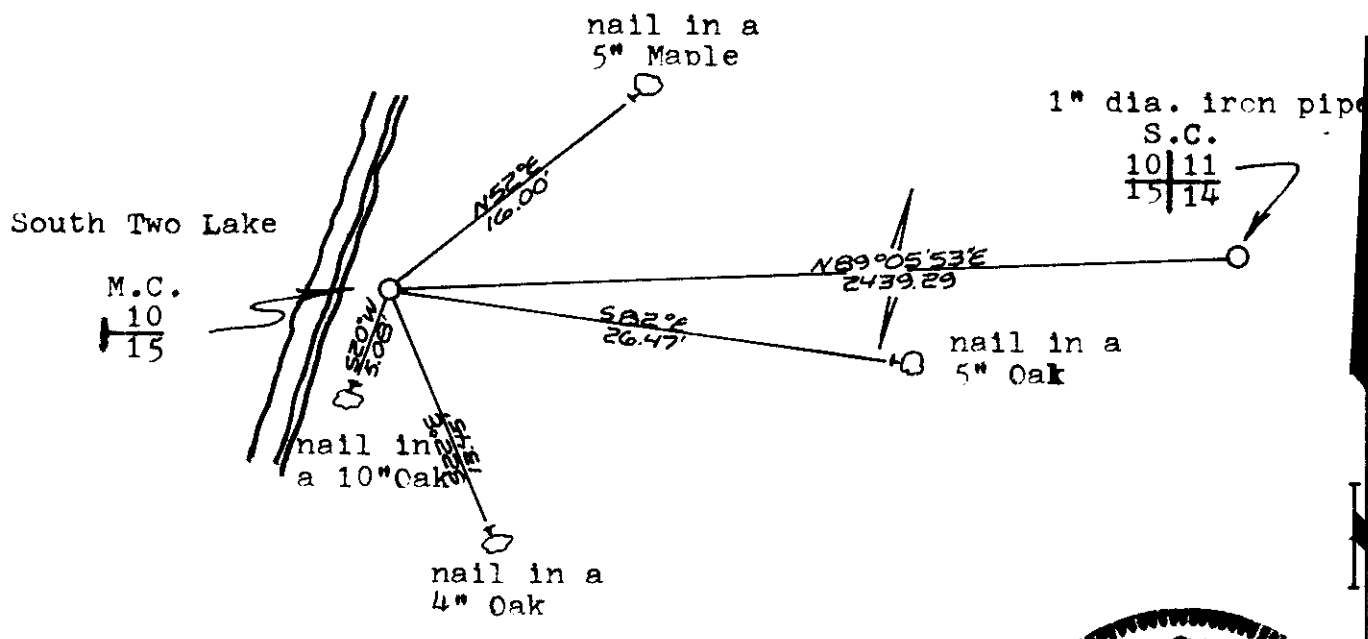
Found a 1" dia. iron pipe as set by Genisot Engineering Co. in 7/20/54 as part of the subdivision of Section 15,

Existing B.T.s : 10" Oak S20 W, 5.08'  
 8" Oak S43 E, 6.4'± damaged in storm.  
 Found no evidence of orig. B.T.s

Original corner was established in the course of the subdivision of T38N, R7E which commenced Aug. 15, 1863 and finished Aug. 27, 1863, Alexander Anderson Dep. Surveyor

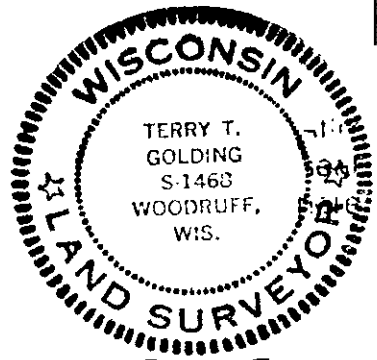
Original B.T.s : Y. Pine 24", S82 W, 70 lks  
 Y. Pine 10", S38 E, 33 lks

(c) (d) (e) Plan view of corner with ties to at least 4 witness monuments. If in disagreement with previously established corner, show the distances between the two corners and also indicate the ties to the disputed corner.



(i) I, Terry T. Golding R.L.S. # S-1468  
 (type or print name) certify that the corner location on this record was determined by me or under my direction and control and that this U.S. Public Land Survey Monument Record is correct and complete to the best of my knowledge and belief.

Signature Terry T. Golding Date 12/20/04



3807100019

Index No. S-15

# U.S. PUBLIC LAND SURVEY MONUMENT RECORD

Note: This form is intended and designed to fulfill all requirements of the Wisconsin Administrative Code, Chapter A-E 7.08 U.S. Public Land Monument Record (3)(a)(b)(c)(d)(e)(f)(g)(h)(i). An additional sheet may be added if necessary to conform with said requirements.

REGISTER OF DEEDS OFFICE  
ONEIDA COUNTY  
FILED

JUL 11 2017

AT \_\_\_\_\_ O'CLOCK \_\_\_\_\_ M  
KYLE J. FRANSON  
REGISTER OF DEEDS

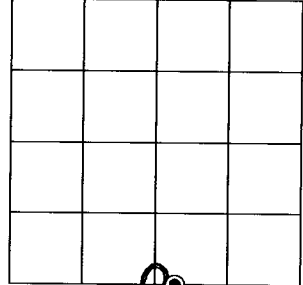
(a) CORNER LOCATION:

E. Meander Corner of Section 10  
Township 38 North  
Range 7 East  
Town of Lake Tomahawk  
County of Oneida

North:  
East:  
Datum: NAD  
GNSS Method:  
GNSS Control:

(RECORDING AREA)

SECTION 10



(b) HISTORY OF ORIGINAL CORNER ESTABLISHMENT

Original Surveyor:  
Date of Survey: Commenced \_\_\_\_\_  
Completed \_\_\_\_\_  
Original B.T.'S \_\_\_\_\_

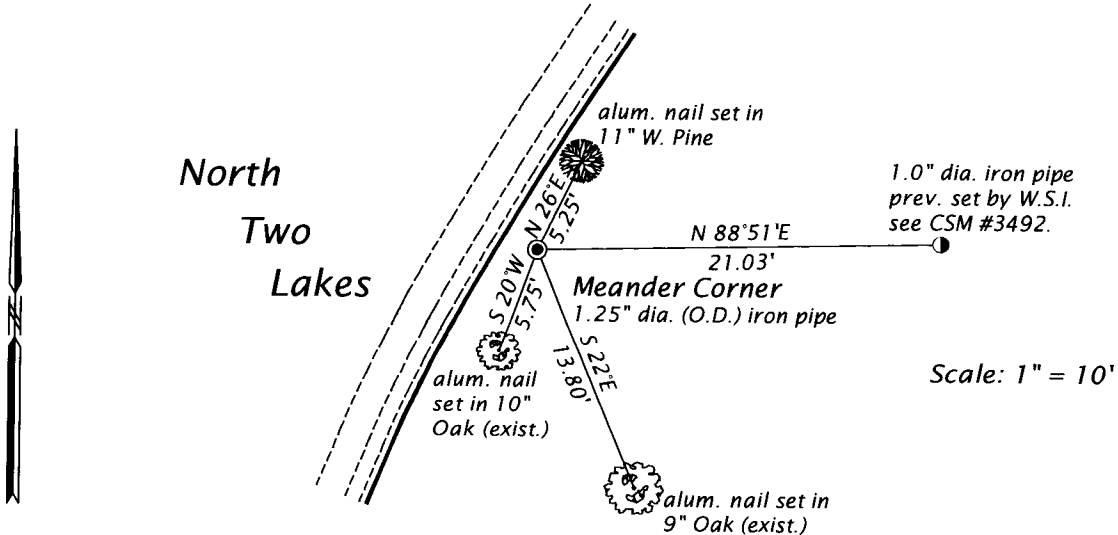
**SEE PREVIOUS U.S.P.L.S. MONUMENT  
RECORD DATED DEC. 20, 1984.**

(f)(g)(h) DESCRIPTION OF MONUMENT FOUND AT THIS CORNER AND IF IT WAS ACCEPTED, STATE ALL EVIDENCE (MATERIAL, TESTIMONIAL, OCCUPATIONAL, PLATS, RECORD, OTHER MONUMENTS) USED AS A BASIS FOR ESTABLISHING LOCATION. IF NOT ACCEPTED OR IF NOTHING WAS FOUND, STATE EVIDENCE USED AS BASIS FOR ESTABLISHING LOCATION. IF REESTABLISHED THROUGH LOST CORNER PROPORTIONATE METHODS, INDICATE ALL MONUMENTS, DISTANCES AND DIRECTIONS USED TO ESTABLISH. INDICATE TYPE OF MONUMENT AND SIGN POST FOUND OR SET.

This is a perpetuation of a previous USPLS Monument Record by Terry T. Golding, RLS, dated December 20, 1984, and filed in the office of the Oneida County Register of Deeds. A complete history of the corner can be found on the previous monument record. I accept the previous location as a true and faithful perpetuation or reestablishment of the original corner location and further perpetuate it as follows.

May 24, 2017, James D. Rein, PLS, found and accepted the 1.25" dia. (O.D.) iron pipe shown on previous Monument Record by Golding. The northeast maple and southeast oak are in bad condition. See below for updated witnesses.

(c)(d)(e) PLAN VIEW OF CORNER WITH TIES TO AT LEAST 4 WITNESS MONUMENTS. IF IN DISAGREEMENT WITH PREVIOUSLY ESTABLISHED CORNER, SHOW THE DISTANCE BETWEEN THE TWO CORNERS AND ALSO INDICATE THE TIES TO THE DISPUTED CORNER.



(i) I, JAMES D. REIN, PROFESSIONAL LAND SURVEYOR NO. S-1234 HEREBY CERTIFY THAT THE CORNER LOCATION ON THIS RECORD WAS DETERMINED BY ME OR UNDER MY DIRECTION AND CONTROL AND THAT THIS U.S. PUBLIC LAND SURVEY MONUMENT RECORD IS CORRECT AND COMPLETE TO THE BEST OF MY KNOWLEDGE AND BELIEF.

*[Handwritten Signature]*

7-07-17  
DATE



INDEX NO. J 15-16  
3807100019

SIGNATURE