

U.S. PUBLIC LAND SURVEY MONUMENT RECORD

REGISTER OF DEEDS OFFICE
ONEIDA COUNTY
FILED

APR 21 2022

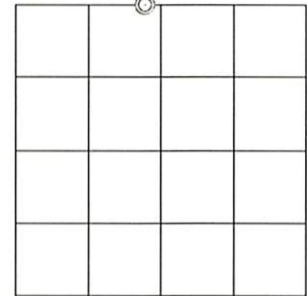
Note: This form is intended and designed to fulfill all requirements of the Wisconsin Administrative Code, Chapter A-E 7.08 U.S. Public Land Monument Record (3)(a)(b)(c)(d)(e)(f)(g)(h)(i). An additional sheet may be added if necessary to conform with said requirements.

KYLE J. FRANKSON
REGISTER OF DEEDS

(a) CORNER LOCATION: WISCORS - Oneida County
 W. Meander Corner north line of Section 15 North: 220329.695 USft
 Township 38 North East: 215411.568 USft
 Range 7 East Datum: NAD 83 (2011)
 Town of Lake Tomahawk GNSS Method: RTK - offset traverse
 County of Oneida GNSS Control: WISCORS VRS

(RECORDING AREA)

SECTION 15



(b) HISTORY OF ORIGINAL CORNER ESTABLISHMENT

Original Surveyor: Alexander Anderson
 Date of Survey: Commenced August 15, 1863
 Completed August 27, 1863
 Original B.T.'S: 24" yellow pine, S 82°W, 70 lks.
 10" yellow pine, S 38°E, 33 lks.

(f)(g)(h) DESCRIPTION OF MONUMENT FOUND AT THIS CORNER AND IF IT WAS ACCEPTED, STATE ALL EVIDENCE (MATERIAL, TESTIMONIAL, OCCUPATIONAL, PLATS, RECORD, OTHER MONUMENTS) USED AS A BASIS FOR ESTABLISHING LOCATION. IF NOT ACCEPTED OR IF NOTHING WAS FOUND, STATE EVIDENCE USED AS BASIS FOR ESTABLISHING LOCATION. IF REESTABLISHED THROUGH LOST CORNER PROPORTIONATE METHODS, INDICATE ALL MONUMENTS, DISTANCES AND DIRECTIONS USED TO ESTABLISH. INDICATE TYPE OF MONUMENT AND SIGN POST FOUND OR SET.

November 15, 1893 - B. F. Dorr, Oneida County Surveyor: Old Field Book 11, page 21 and Dorr-Vaughan Book, page 165. M.C. West of S ¼ P, SW tree is S72°W, 32 lks. instead of S 82°W, 70 lks.; NE tree is N38°W, 10 lks.

July 22, 1939 - Vernon Maine, Surveyor: 1939 Diary Book, pages 71-72, @ 35.23 chains east of section corner fell 11 lks. south of original M.C., old stake & stp. of original b.t. (see Door's notes) Marked O.B.T.; new oak stake; new bt's W.P. 6" S 34°W, 47 lks; and Blk. Oak 5"; N52°E, 39 lks.

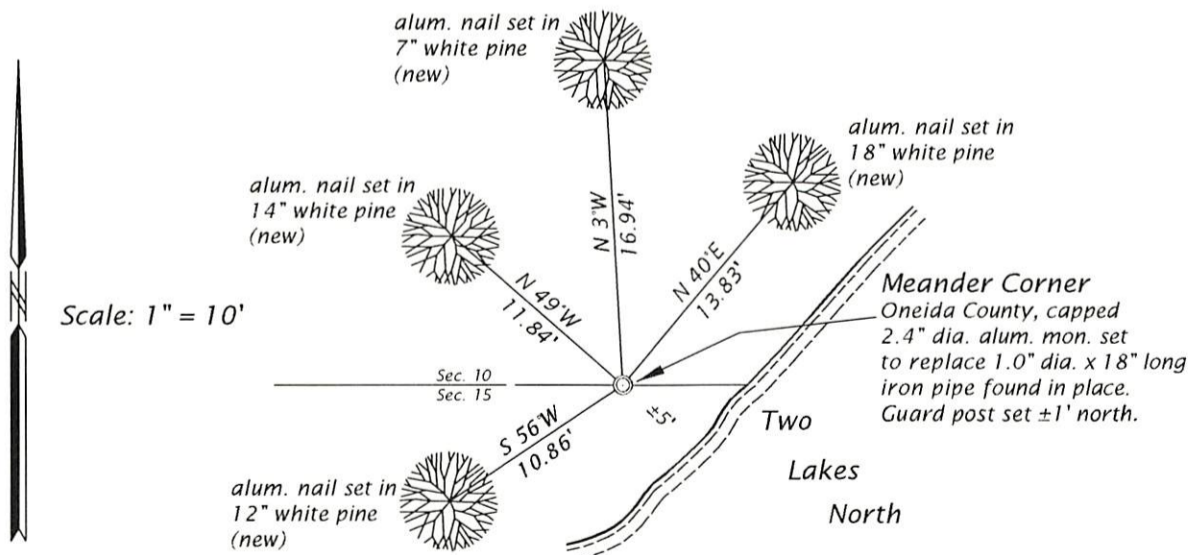
July 20, 1954 - Genisot Engineering Co. survey map dwg. No. 1477, by Robert E. Bandow, Surveyor; filed as C1991 in county survey office, describes corner, monumented by an iron pipe, referenced by W. Pine 7" S 53°30'W, 42 feet; and by an Oak 6" S 35°30'E, 3.6 feet/

DNR corner recovery notes ± 1970's - meander corner on south line of Section 10, on west shore of North Two Lake; ¾" iron post 5" high (not by us), replaced an old squared wood post now lying down. Old bearing tree; 8" Or - S28°E, 5.5 links; new bearing tree, 9" Bw - S75°W, 29.7 lks.; from corner it is 17 feet southeast to shore.

March 25, 2006 - James D. Rein, RLS No. 1234: recovered a 1" dia. iron pipe extending 2" above ground; Scarred Oak stp. 10" S 35°30'E, 3.0 feet; and an oak S 55°50'W, 41.5 feet.

April 1, 2022 - James D. Rein, PLS No. 1234: we recovered, and I accepted the 1" dia. iron pipe extending 1" above ground level and replaced it with an Oneida County capped 2.4" dia. aluminum monument and made new bearing tree ties as shown in the plan.

(c)(d)(e) PLAN VIEW OF CORNER WITH TIES TO AT LEAST 4 WITNESS MONUMENTS. IF IN DISAGREEMENT WITH PREVIOUSLY ESTABLISHED CORNER, SHOW THE DISTANCE BETWEEN THE TWO CORNERS AND ALSO INDICATE THE TIES TO THE DISPUTED CORNER.



(i) I, JAMES D. REIN, PROFESSIONAL LAND SURVEYOR NO. S-1234 HEREBY CERTIFY THAT THE CORNER LOCATION ON THIS RECORD WAS DETERMINED BY ME OR UNDER MY DIRECTION AND CONTROL AND THAT THIS U.S. PUBLIC LAND SURVEY MONUMENT RECORD IS CORRECT AND COMPLETE TO THE BEST OF MY KNOWLEDGE AND BELIEF.

James D. Rein
 SIGNATURE

4-11-22
 DATE



INDEX NO. J 14-15
 380710022