

# U.S. PUBLIC LAND SURVEY MONUMENT RECORD

**Note:** This form is intended and designed to fulfill all requirements of Wisconsin Administrative Code, Chapter A-E 7.08 U.S. Public Land Survey Monument Record (3) (a) (b) (c) (d) (e) (f) (g) (h) (i). An additional sheet may be added if necessary to conform with said requirements.

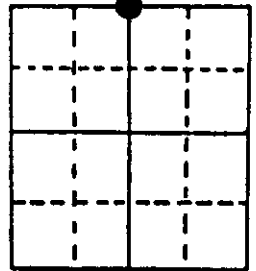
(a) Corner location: Township 38 North Corner: North 1/4 Corner

Section 14 Range 7 East Original Surveyor: A. Anderson

Town/City/Village Lake Tomahawk

Original B.T.'s: 24" Py S20°W 25 lks  
6" Mh S33°E 48 lks

County Oneida

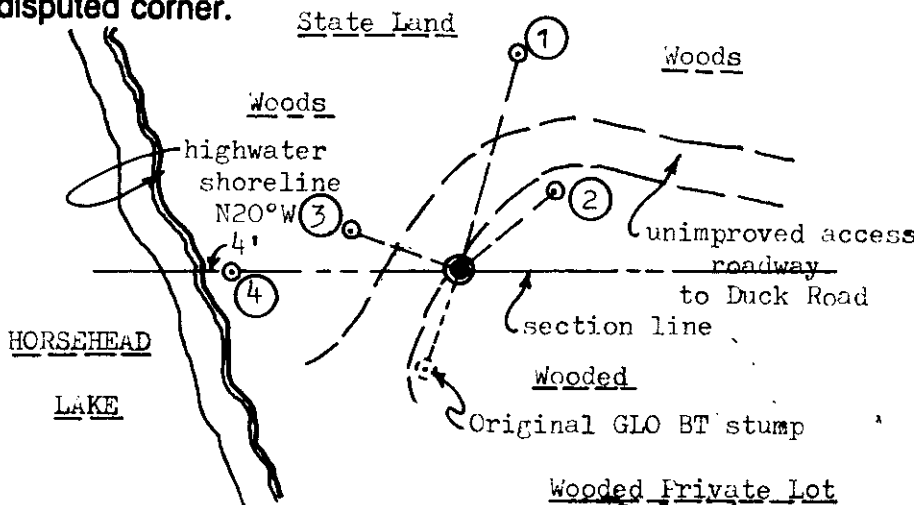


Original Survey Date: August 1863 ● Location

(b) (f) (g) (h) Description of monument found at this corner and if it was accepted, state all evidence (material, testimonial, occupational, plats, records, other monuments) used as a basis for accepting. If not accepted or if nothing was found, state evidence used as basis for establishing location. If reestablished through lost corner proportionate methods, indicate all monuments, distances and directions used to establish. Indicate type of monument found or set and sign post.

Found and accepted undisturbed 1" dia. iron pipe monument at corner location 4" below grade of an unimproved access roadway to lake from Duck Road, per a 1976 plat of survey made by Wilderness Surveying of Minocqua, Wis. filed as #C-317 in Oneida County Surveyor records; both of their noted BTs were found and used for new ties below. The 24" Py OBT S20°W 25 lks is now a rotting shell in fair condition at S18°W and checks with 16.9' distance from the corner by Wilderness to face of remaining lower blaze on easterly side of stump with an OBT scribe clearly evidenced, which I believe would have been scribed at a date later than the GLO survey, simply to identify the stump as being the original OBT. Nearly obliterated or badly decayed remains of the SE Maple OBT root crown appear probable by position only, but not with certainty. Satisfied with this corner location, I carefully set a standard 2" dia. by 30" long Berntsen aluminum monument with stamped Oneida County cap over the 1" iron pipe found of record at the corner, with cap flush to existing roadway grade, and set a standard white poly corner marker post 6" East of the corner monument on easterly bank of the road, in an old wood post hole found by soil scalping with a hand trowel. Adjoining private lot to south presently owned by Donald & Carol Nieber, Fire No. 7139 at North dead end of Duck Road from STH 47. Recovery completed 6/13/97; no witnesses.

(c) (d) (e) Plan view of corner with ties to at least 4 witness monuments. If in disagreement with previously established corner, show the distances between the two corners and also indicate the ties to the disputed corner.



**Witness Monument Ties:**

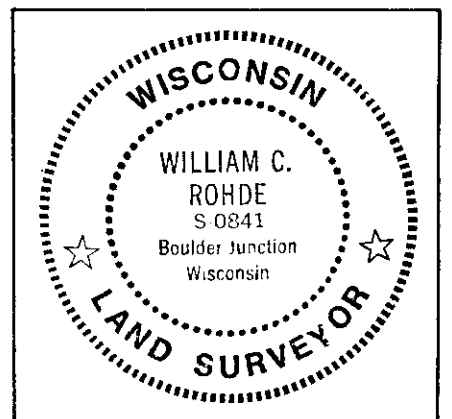
- ① New BT 11" Pw N15°E 34.70'.
- ② Record BT 16" Pw N50°E 19.08' lower face blaze fissure plain.
- ③ New BT 7" Pw N69°W 18.05'.
- ④ 1" iron pipe found west 34.53', at Wit MC which I also found and referenced this date per new location record filed.

Unless otherwise indicated, all BT witness monument ties are to a 1/4" dia. by 2.5" long PK nail with 1.25" dia. steel washer set in unblazed right face bark; and a PK nail with 2" dia. steel washer stamped BT also set in unblazed front face bark of each BT at DBH. All previous corner recovery notes from Wisconsin DNR and/or Oneida County survey records.



Scale: 1" = 30'

(i) I, William C. Rohde, RLS 841  
(type or print name) certify that the corner location on this record was determined by me or under my direction and control and that this U.S. Public Land Survey Monument Record is correct and complete to the best of my knowledge and belief.



Index No. 519

Signature

Date

June 18, 1997

SHEET 1 OF 1

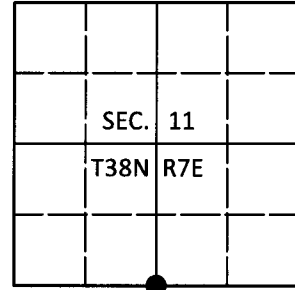
3807110020

# U.S. PUBLIC LAND SURVEY MONUMENT RECORD

Note: This form is intended and designed to fulfill all requirements of Wisconsin Administrative Code, Chapter A-E 7.08 U.S. Public Land Survey Monument Record (3)(a-i).

(a) CORNER LOCATION  
 1/4 Cor. of Secs. 11 & 14  
 Township 38 North  
 Range 7 East of the 4th P.M.  
 Town of Lake Tomahawk  
 County of Oneida

WISCRS - Oneida County  
 N: 220,442.21 USft  
 E: 220,904.88 USft  
 Datum: NAD 83(2011)  
 GNSS Method: RTN - Direct  
 GNSS Control: WISCORS VRS



(b) HISTORY OF ORIGINAL CORNER ESTABLISHMENT

Original Surveyor:

Original Accessories:

Date of Survey

Commenced:  
 Completed:

See previous USPLS Monument Record

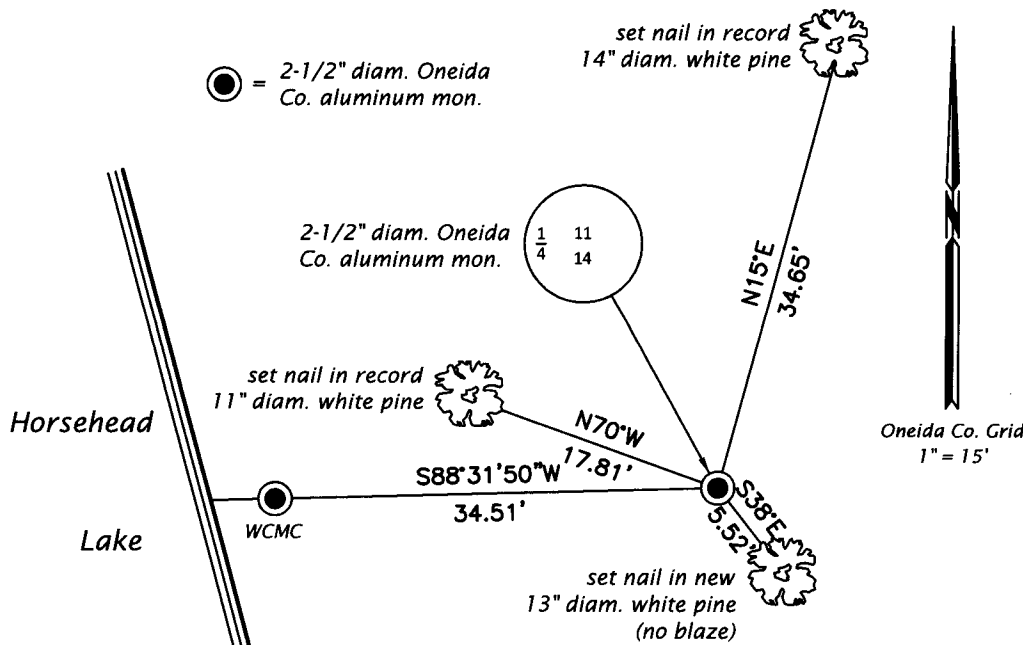
(b)(f)(g)(h) Description of monument found at this corner and if it was accepted, state all evidence (material, testimonial, occupational, plats, records, other monuments) used as a basis for accepting. If not accepted or if nothing was found, state evidence used as basis for establishing location. If re-established through lost corner proportionate methods, indicate all monuments, distances and directions used to establish. Indicate type of monument and sign post found or set.

*This is a perpetuation of a previous USPLS Monument Record by William C. Rohde, RLS dated June 18, 1997 and filed in the office of the Oneida County Register of Deeds. A complete history of the corner can be found on the previous monument record. I accept the previous location as a true and faithful perpetuation or reestablishment of the original corner location and further perpetuate it as follows.*

*April 10, 2018: I found and accepted the record monument, a 2-1/2" diam. aluminum pipe with a 3-1/4" diam. Oneida Co. aluminum cap flush with the ground surface. The monument is on the East edge of a woods road. The record bearing tree at 19.08' is gone. I found or established accessories as shown below. I found a white vinyl sign post bearing East, 0.5 ft.*

*The coordinate value shown has been verified by at least one of the following methods: 1) comparison to a previously GPS determined published value; 2) the value is the average of two or more GPS observations at a markedly different time; 3) one or more distances were measured back to the GPS observed corner from temporary GPS observed offset locations.*

(c)(d)(e) Plan view of corner with ties to at least 4 witness monuments. If in disagreement with previously established corner, show the distances between the two corners and also indicate the ties to the disputed.

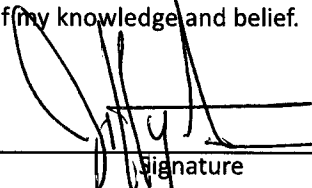


REGISTER OF DEEDS OFFICE  
 ONEIDA COUNTY  
 FILED

MAY 01 2018

KYLE J. FRANSON  
 REGISTER OF DEEDS

(i) I, Jeffrey W. Austin, Professional Land Surveyor No. S-1885, hereby certify that the corner location on this record was determined by me or under my direction and control and that this U.S. Public Land Survey Monument Record is correct and complete to the best of my knowledge and belief.

 \_\_\_\_\_  
 Signature Date APR. 23, 2018