

U.S. PUBLIC LAND SURVEY MONUMENT RECORD

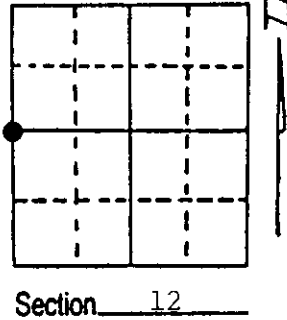
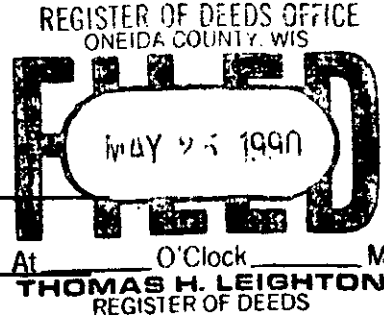
Note: This form is intended and designed to fulfill all requirements of Wisconsin Administrative Code, Chapter A-E 7.08 U.S. Public Land Survey Monument Record (3) (a) (b) (c) (d) (e) (f) (g) (h) (i). An additional sheet may be added if necessary to conform with said requirements.

(a) Corner location: Township 38 North

Range 7 East/West

Town/City/Village Lake Tomahawk

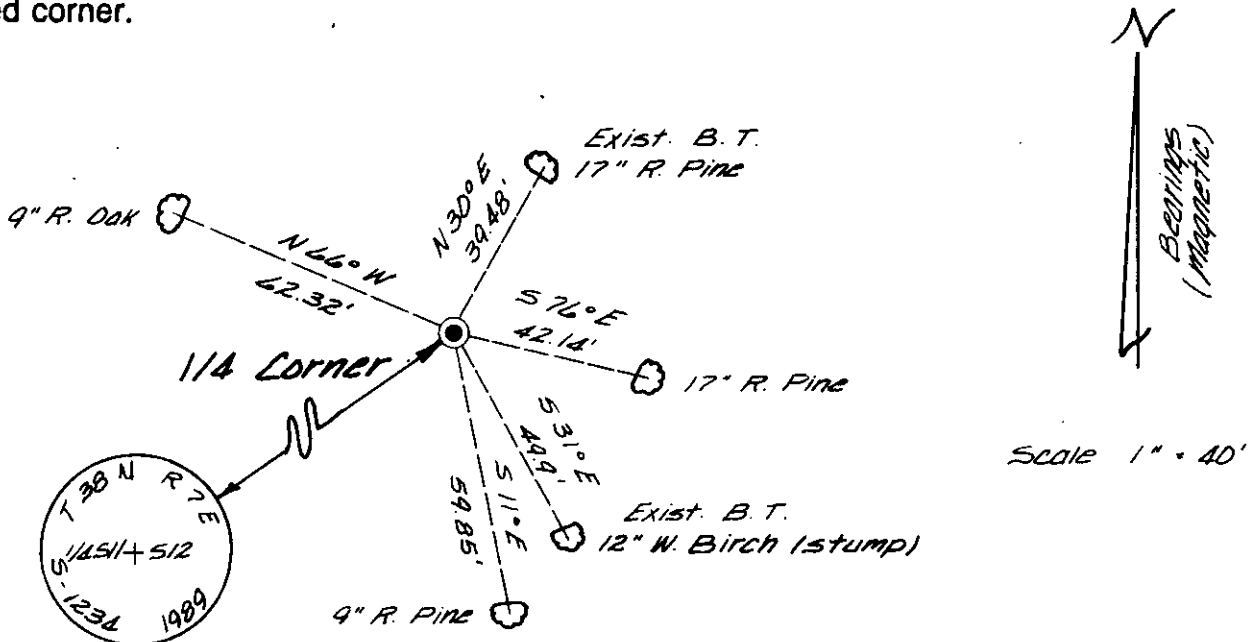
County Oneida



(b) (f) (g) (h) Description of monument found at this corner and if it was accepted, state all evidence (material, testimonial, occupational, plats, records, other monuments) used as a basis for accepting. If not accepted or if nothing was found, state evidence used as basis for establishing location. If reestablished through lost corner proportionate methods, indicate all monuments, distances and directions used to establish.

Aug 1863 - Alexander Anderson, Deputy Surveyor, set $\frac{1}{4}$ section post. Bearing trees: 12" Hemlock, S20°E, 11 links; 5" Maple, N47°W, 36 links.
 June 9, 1976 - Harold Behn, R.L.S., identifies corner on Hodstradt Off Water County Plat as being a 2" dia. iron pipe found in place. Existing bearing trees: 16" Norway Pine, N32°E, 39.0'; 10" W. Birch, S29°E, 49.9'.
 April 8, 1989 - James D. Rein, R.L.S., found corner to be dozed out. Set 2" dia. x 30" long flanged bottom Oneida County Monument, by crossing reference ties for existing bearing trees: 12" W. Birch (stump), S31°E, 49.9', 17" R. Pine, N30°E, 39.48' (39.0' to face of tree). Set Oneida County Plastic Post $1\frac{1}{2}$ ' N.E. See detail sketch below for additional reference ties and information.

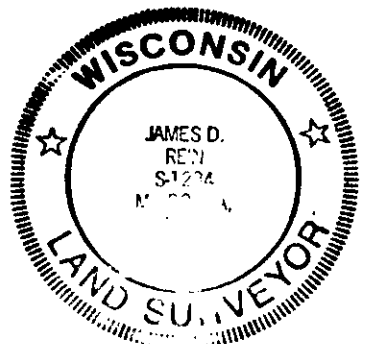
(c) (d) (e) Plan view of corner with ties to at least 4 witness monuments. If in disagreement with previously established corner, show the distances between the two corners and also indicate the ties to the disputed corner.



(i) I, James D. Rein R.L.S. No. 1234
 (type or print name) certify that the corner location on this record was determined by me or under my direction and control and that this U.S. Public Land Survey Monument Record is correct and complete to the best of my knowledge and belief.

James D. Rein
 Signature

April 8th, 1989
 Date



Index No. G-21

3807112000