

U.S. PUBLIC LAND SURVEY MONUMENT RECORD

Note: This form is intended and designed to fulfill all requirements of Wisconsin Administrative Code, Chapter A-E 7.08 U.S. Public Land Survey Monument Record (3) (a) (b) (c) (d) (e) (f) (g) (h) (i). An additional sheet may be added if necessary to conform with said requirements.

(a) Corner location: Township 38 North Corner: NE Section Corner

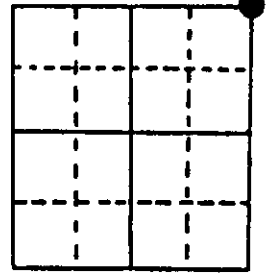
Section 13 Range 7 East Original Surveyor: A. Millard

Town/City/Village Lake Tomahawk

Original B.T.'s: 9" Pw S22°W 15 lks
8" Pw N45°W 30 lks
6" Bw N16°E 22 lks
6" Py S65°E 27 lks

County Oneida

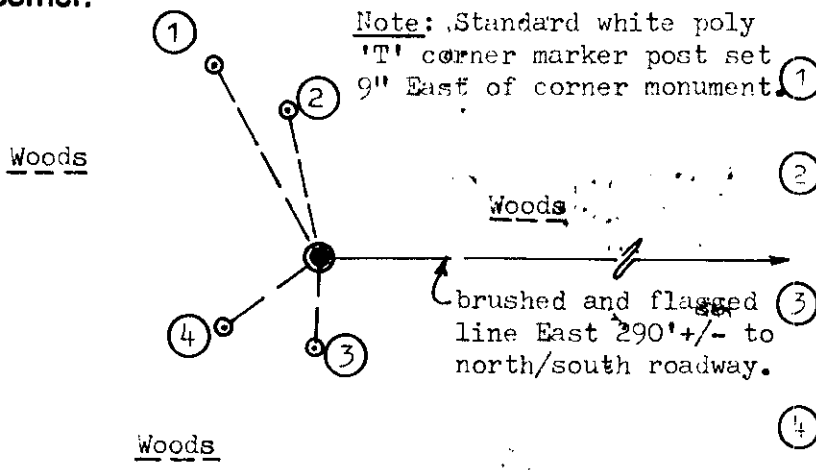
Original Survey Date: September 1860 ● Location



(b) (f) (g) (h) Description of monument found at this corner and if it was accepted, state all evidence (material, testimonial, occupational, plats, records, other monuments) used as a basis for accepting. If not accepted or if nothing was found, state evidence used as basis for establishing location. If reestablished through lost corner proportionate methods, indicate all monuments, distances and directions used to establish. Indicate type of monument found or set and sign post.

Found and accepted an undisturbed 2" dia. standard iron pipe monument with stamped WCD brass cap 18" above grade on easterly slope of a low hill to West. A line West to this corner is accessible 0.45 miles southerly along an unimproved forest roadway from the junction of Dove Road and River Road, and the line begins at a 10" Aspen on the west side of said forest road with an open blaze at DBH and a standard aluminum WCD corner location tag plate stamped "330' West to 1/4 Cor."; I brushed a line west to the corner monument from the Aspen marker tree and rough taped 285' in lieu of 330'. All original GLO corner evidence is now obliterated. In 1907, Vaughn could find no GLO evidence and set a post at the corner by proportion 31.63 chains North of an original GLO MC on the North bank of the Wisconsin River to the South of this corner; his BT 16" Pn N24°W 1.015 chains is now a 28" high stump in fair condition at 67.0' to face of lower blaze now open and plain, and his 20" Pn BT N84°E 2.06 chains is now a badly rotted root crown with a small Bw growing in cavity. WCD/WisDNR records at the Trout lake office, further note recovery of Vaughns wood post at the corner and newer BTs: 6" Mh S49°W 11.2' now gone; 7" Oak N33°W 34.2' now 10" and used for new ties; Seymour/DNR in 1989, set the WCD capped iron pipe monument from found record BTs and noted a new BT Oak N16°W and S01°W which I found and used for new ties below. Recovery completed 6-12-97; no witnesses.

(c) (d) (e) Plan view of corner with ties to at least 4 witness monuments. If in disagreement with previously established corner, show the distances between the two corners and also indicate the ties to the disputed corner.



Note: Standard white poly 'T' corner marker post set 9" East of corner monument.

Witness Monument Ties:

- ① Record BT 10" Oak (East trunk of cluster of 4) N29°W 34.70'
- ② Older BT found 14" Oak N12°W 23.72' with upper face blaze open and plain.
- ③ Older BT found 14" Maple S03°W 14.06' with upper face blaze open and plain.
- ④ New BT 7" Oak S56°W 18.45'.

Upper & lower face blazes shut but plain on BT at No. 1 above.



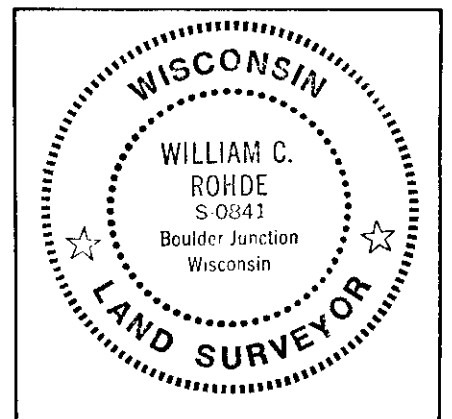
Scale: 1" = 30'

Unless otherwise indicated, all BT witness monument ties are to a 1/4" dia. by 2.5" long PK nail with 1.25" dia. steel washer set in unblazed right face bark; and a PK nail with 2" dia. steel washer stamped BT also set in unblazed front face bark of each BT at DBH. All previous corner recovery notes from Wisconsin DNR and/or Oneida County survey records.

(i) I, William C. Rohde, RLS 841
(type or print name) certify that the corner location on this record was determined by me or under my direction and control and that this U.S. Public Land Survey Monument Record is correct and complete to the best of my knowledge and belief.

William C. Rohde
Signature

June 18, 1997
Date



Index No. J 25

OCT 19 2017

AT _____ O'CLOCK _____ M
KYLE J. FRANSON
REGISTER OF DEEDS

U.S. PUBLIC LAND SURVEY MONUMENT RECORD

Note: This form is intended and designed to fulfill all requirements of the Wisconsin Administrative Code, Chapter A-E 7.08 U.S. Public Land Monument Record (3)(a)(b)(c)(d)(e)(f)(g)(h)(i). An additional sheet may be added if necessary to conform with said requirements.

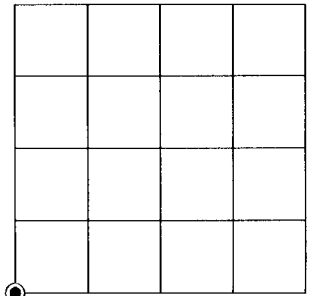
(a) CORNER LOCATION:

Southwest Corner of Section 7
Township 38 North
Range 8 East
Town of Lake Tomahawk
County of Oneida

North:
East:
Datum:
GNSS Method:
GNSS Control:

(RECORDING AREA)

SECTION 7



(b) HISTORY OF ORIGINAL CORNER ESTABLISHMENT

Original Surveyor:
Date of Survey: Commenced _____
Completed _____
Original B.T.'S _____

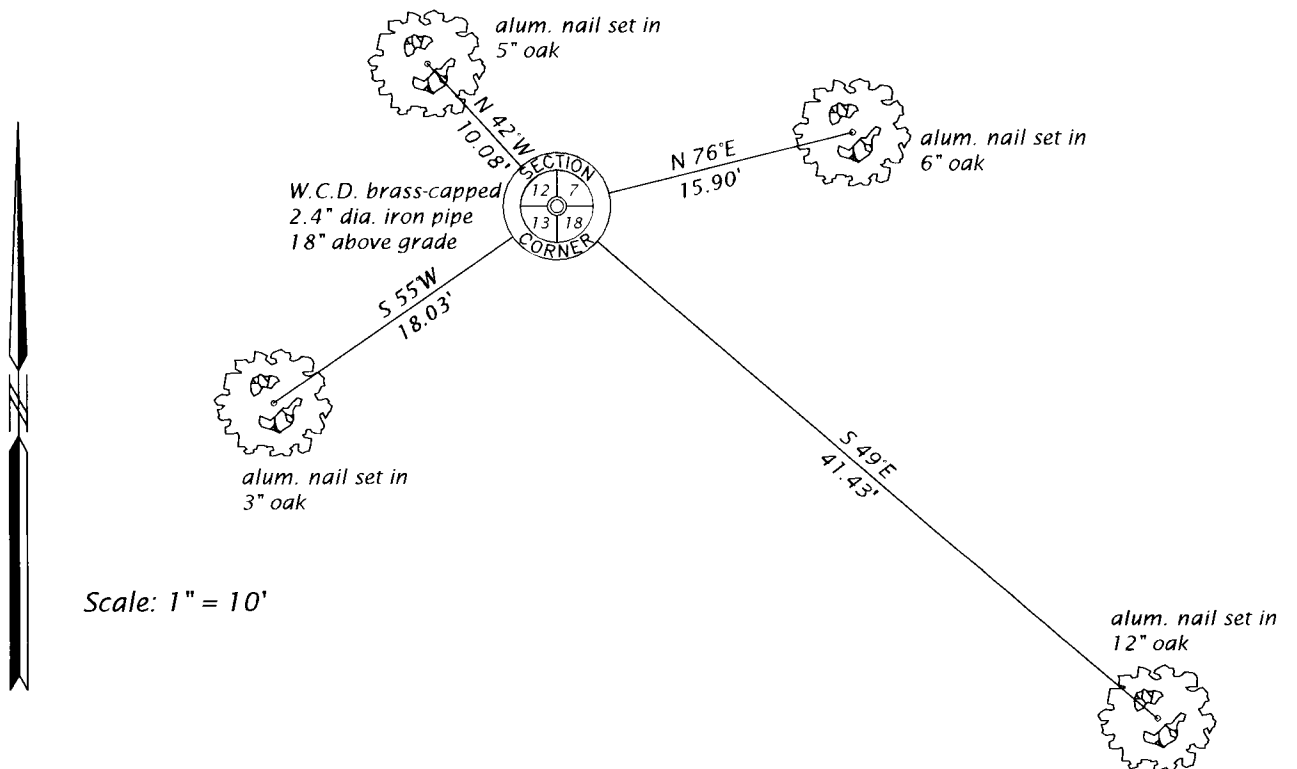
*SEE PREVIOUS U.S.P.L.S. MONUMENT
RECORD DATED JUNE 18, 1997.*

(f)(g)(h) DESCRIPTION OF MONUMENT FOUND AT THIS CORNER AND IF IT WAS ACCEPTED, STATE ALL EVIDENCE (MATERIAL, TESTIMONIAL, OCCUPATIONAL, PLATS, RECORD, OTHER MONUMENTS) USED AS A BASIS FOR ESTABLISHING LOCATION. IF NOT ACCEPTED OR IF NOTHING WAS FOUND, STATE EVIDENCE USED AS BASIS FOR ESTABLISHING LOCATION. IF REESTABLISHED THROUGH LOST CORNER PROPORTIONATE METHODS, INDICATE ALL MONUMENTS, DISTANCES AND DIRECTIONS USED TO ESTABLISH. INDICATE TYPE OF MONUMENT AND SIGN POST FOUND OR SET.

This is a perpetuation of a previous U.S.P.L.S. Monument Record by William C. Rohde, RLS, dated June 18, 1997, and filed in the office of the Oneida County Register of Deeds. A complete history of the corner can be found on the previous monument record. I accept the previous location as a true and faithful perpetuation or reestablishment of the original corner location and further perpetuate it as follows.

July 21, 2017, James D. Rein, PLS No. S-1234, found and accepted the W.C.D. brass-capped iron pipe shown on the previous monument record by Rohde. His previous bearing trees are now either gone or stumps - see below for new witnesses.

(c)(d)(e) PLAN VIEW OF CORNER WITH TIES TO AT LEAST 4 WITNESS MONUMENTS. IF IN DISAGREEMENT WITH PREVIOUSLY ESTABLISHED CORNER, SHOW THE DISTANCE BETWEEN THE TWO CORNERS AND ALSO INDICATE THE TIES TO THE DISPUTED CORNER.



(i) I, JAMES D. REIN, PROFESSIONAL LAND SURVEYOR NO. S-1234
HEREBY CERTIFY THAT THE CORNER LOCATION ON THIS RECORD
WAS DETERMINED BY ME OR UNDER MY DIRECTION AND CONTROL
AND THAT THIS U.S. PUBLIC LAND SURVEY MONUMENT RECORD IS
CORRECT AND COMPLETE TO THE BEST OF MY KNOWLEDGE AND
BELIEF.

[Handwritten Signature]
SIGNATURE

10-17-17
DATE



INDEX NO. J-25
3807120000