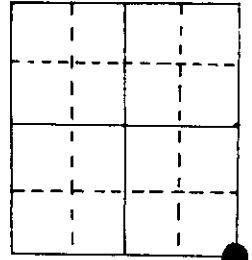


U.S. PUBLIC LAND SURVEY MONUMENT RECORD

Note: This form is intended and designed to fulfill all requirements of Wisconsin Administrative Code, Chapter A-E 5.02, U.S. Public Land Survey Monument Record (3) (a) (b) (c) (d) (e) (f) (g) (h) (i). An additional sheet may be added if necessary to conform with said requirements.

(a) Corner location: Township 38 North
 Range 7 East ~~West~~

Town/~~City/Village~~ Lake Tomahawk
 County Oneida



Section 13

(b) (f) (g) (h) Description of monument found at this corner and if it was accepted, state all evidence (material, testimonial, occupational, plats, records, other monuments) used as a basis for accepting. If not accepted or if nothing was found, state evidence used as basis for establishing location. If reestablished through lost corner proportionate methods, indicate all monuments, distances and directions used to establish.

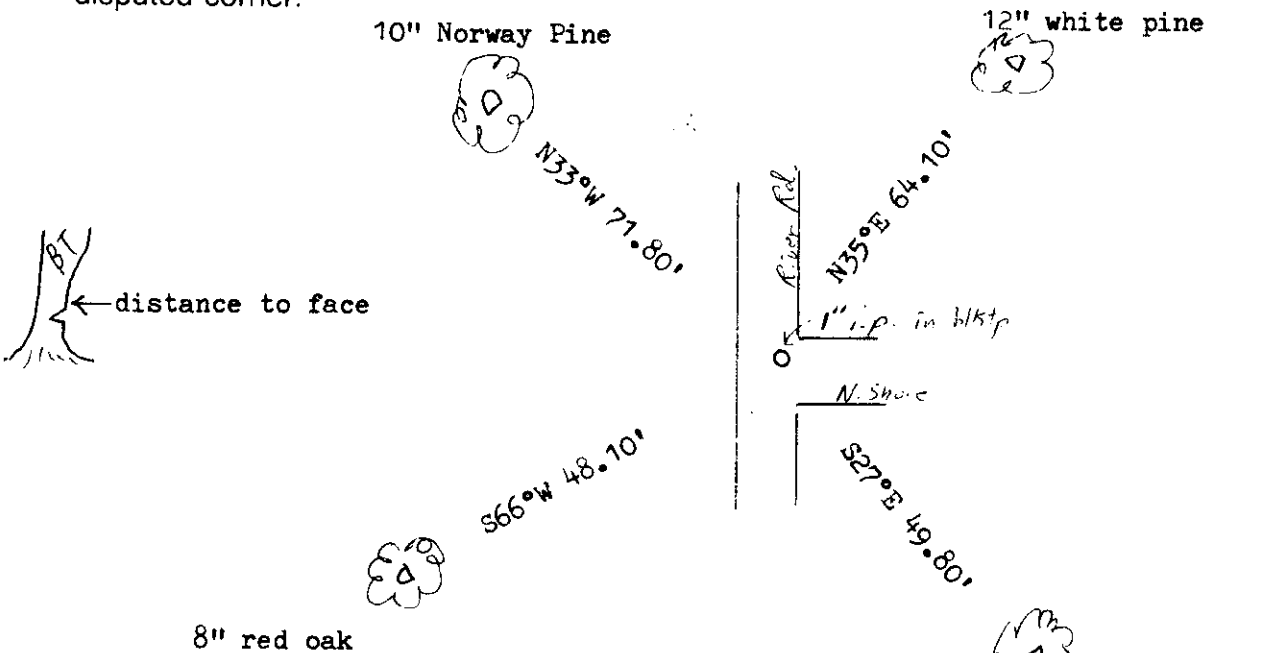
Original by A. Millard, 1860, OBT's PW 36 N53°W 37 lks., PW 30" N 34°E 59 lks.
 PW 30" S30°E 125 lks., PW 36" S9°W 115 lks.

Vaughn, 1908, found stps and stubs of all four OBT's and set post from them.

L.P. Pelishek, Engineer, set iron stake in 9/1/1924, BT's O 5" S67°W 14, BW 4" North 34
 (from records at Genisot Eng. in Rhinelander)

Seymour & Copp, 1982, found 1" iron pipe in blktp., no BT's as above BT's would be
 in road now. Made four BT's. Distance to E 13 checks with Vaughn's.

(c) (d) (e) Plan view of corner with ties to at least 4 witness monuments. If in disagreement with previously established corner, show the distances between the two corners and also indicate the ties to the disputed corner.



(i) I, Marvin E. Seymour
 (type or print name) certify that the corner location on this record was determined by me or under my direction and control and that this U.S. Public Land Survey Monument Record is correct and complete to the best of my knowledge and belief.

Marvin E. Seymour Signature Feb. 19, 1988 Date

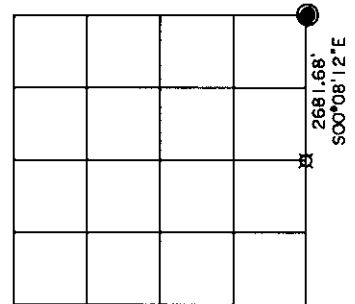


U.S. PUBLIC LAND SURVEY MONUMENT RECORD

Note: This form is intended and designed to fulfill all requirements of Wisconsin Administrative Code, Chapter A-E 7.08 U.S. Public Land Survey Monument Record (3)(a)(b)(c)(d)(e)(f)(g)(h)(i). An additional sheet may be added if necessary to conform with said requirements.

(a) CORNER LOCATION:

Northeast corner of Sec. 24 State Plane Coordinates
 Township 38 North X _____
 Range 7 East Y _____
 Town ~~City/Village~~ Newbold Datum Base _____
 County of Oneida



(b) HISTORY OF ORIGINAL CORNER ESTABLISHMENT

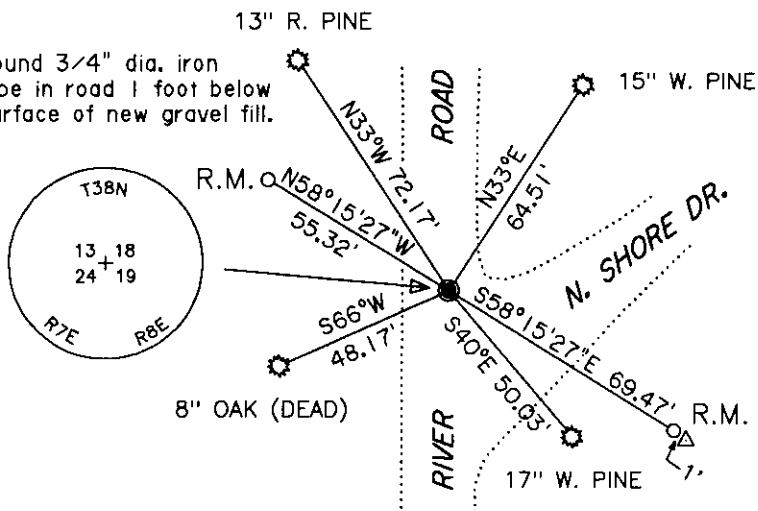
Original Surveyor: A. Millard Original B.T.'S SECTION 24
 Date of Survey: Commenced 1860 W. Pine 36" N53°W, 37 lks.
 Completed 1860 W. Pine 30" N34°E, 59 lks.
 W. Pine 30" S30°E, 125 lks.
 W. Pine 36" S°9W, 115 lks.

(f)(g)(h) Description of monument found at this corner and if it was accepted, state all evidence (material, testimonial, occupational, plats, records, other monuments) used as a basis for establishing location. If not accepted or if nothing was found, state evidence used as basis for establishing location. If reestablished through lost corner proportionate methods, indicate all monuments, distances and directions used to establish. Indicate type of monument and sign post found or set.

SEE U.S. PUBLIC LAND SURVEY MONUMENT RECORD BY MARVIN E. SEYMOUR DATED FEBRUARY 19TH, 1988.

November 17th, 1999 – James D. Rein, RLS No. 1234, recovered 3/4" dia. iron pipe in road, below one foot of new gravel fill. Because corner monument will be obliterated by asphalt pavement when road work is completed, I place iron pipe reference monuments as shown in plan.

(c)(d)(e) Plan view of corner with ties to at least 4 witness monuments. If in disagreement with previously established corner, show the distance between the two corners and also indicate the ties to the disputed corner.



SCALE: 1" = 50'

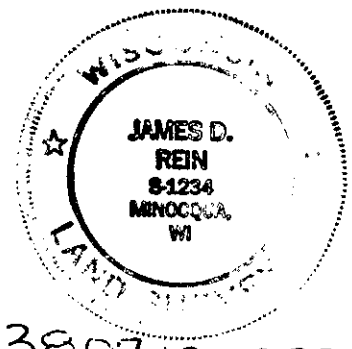
- NOTES:**
- 1) Bearings to trees are magnetic.
 - 2) B.T. meas. to aluminum nail set in root crown on side of tree.
 - 3) Bearings to reference monuments are based on east line of the NE 1/4 bearing S00°08'12"E.

- LEGEND**
- = Set 3/4" dia. x 24" long iron pipe with plastic insert cap.
 - Δ = Set plastic marker stake



(i) I, James D. Rein, Registered Land Surveyor No. 1234, hereby certify that the corner location on this record was determined by me or under my direction and control and that this U.S. Public Land Survey Monument Record is correct and complete to the best of my knowledge and belief.

James D. Rein December 15th, 1999
 Signature Date



3807130000

INDEX NO. N 25