

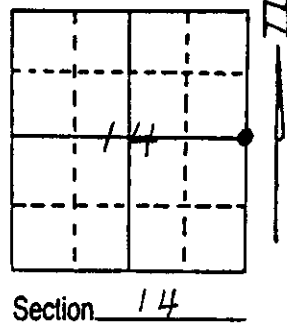
# U.S. PUBLIC LAND SURVEY MONUMENT RECORD

Note: This form is intended and designed to fulfill all requirements of Wisconsin Administrative Code, Chapter A-E 5.02, U.S. Public Land Survey Monument Record (3) (a) (b) (c) (d) (e) (f) (g) (h) (i). An additional sheet may be added if necessary to conform with said requirements.

(a) Corner location: Township 38 North  
 Range 7 East/West

Town/City/Village Lake Tomahawk

County Oneida



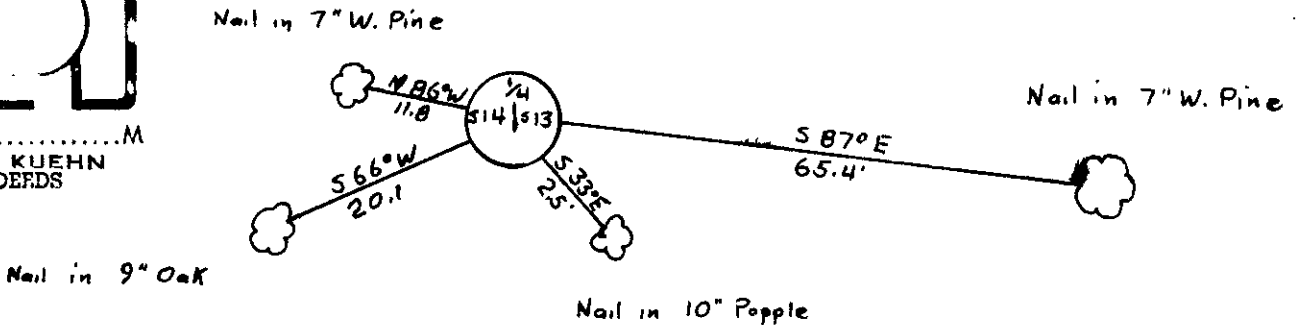
(b) (f) (g) (h) Description of monument found at this corner and if it was accepted, state all evidence (material, testimonial, occupational, plats, records, other monuments) used as a basis for accepting. If not accepted or if nothing was found, state evidence used as basis for establishing location. If reestablished through lost corner proportionate methods, indicate all monuments, distances and directions used to establish.

Replaced 2" iron pipe with 3" diameter Oneida County aluminum tablet on 2" diameter aluminum pipe 2.5 feet long.

White Pine	7'	S87°E	65.4 feet
Popple	10"	S33°E	2.5 feet
White Pine	7"	N86°W	11.8 feet

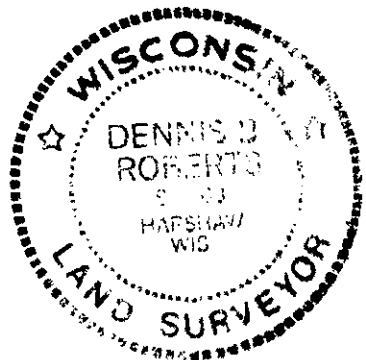
(c) (d) (e) Plan view of corner with ties to at least 4 witness monuments. If in disagreement with previously established corner, show the distances between the two corners and also indicate the ties to the disputed corner.

REGISTER OF DEEDS OFFICE  
 ONEIDA COUNTY, WIS.  
**FILED**  
 At \_\_\_\_\_ O'Clock \_\_\_\_\_ M  
**DORIS VERAGE KUEHN**  
 REGISTER OF DEEDS



(i) I, Dennis E. Roberts  
 (type or print name) certify that the corner location on this record was determined by me or under my direction and control and that this U.S. Public Land Survey Monument Record is correct and complete to the best of my knowledge and belief.

Dennis E. Roberts Signature 12-24-86 Date



Index No. L 21

3807142000

# U.S PUBLIC LAND SURVEY MONUMENT RECORD

Note: This form is intended and designed to fulfill all requirements of Wisconsin Administrative Code, Chapter A-E 7.08 U.S. Public Land Survey Monument Record (3) (a) (b) (c) (d) (e) (f) (g) (h) (i). An additional sheet may be added if necessary to conform to said requirements.

REGISTER OF DEEDS OFFICE  
ONEIDA COUNTY  
FILED

(a) Corner location: Township 38 North Range 7 East

FEB 21 2022

Town/City/Village Lake Tomahawk

KYLE J. FRANSON  
REGISTER OF DEEDS

County Oneida

(b) (f) (g) (h) Description of monument found at this corner and if it was accepted, state all evidence (material, testimonial, occupational, plats, records, other monuments) used as a basis for accepting. If not accepted or if nothing was found, state evidence used as basis for establishing locations. If reestablished through lost corner proportionate methods, indicate all monuments, distances and directions used to establish. Indicate type of monument found or set and sign post.

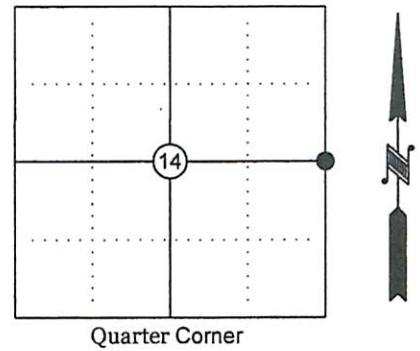
See USPLS Monument Record by Dennis B. Roberts dated 12-24-86.

Lloyd Scott and John Fisher show the corner on the following survey map numbers: L167, CSM 342 and CSM 386 with BT's: 4" W. Pine S27E, 4.9' and 4" W. Pine S87W, 11.5'.

Dennis Roberts shows the corner as a Oneida County aluminum monument on a survey map dated 8/6/87 (map number B1600).

James L. Rein and James D. Rein shows the corner as an Oneida County aluminum monument and a capped aluminum monument on the following survey map numbers: B2511, B4815, B5510 and C2990.

McMullen & Associates found an Oneida County aluminum monument at this corner position which verified to existing Bearing Trees (BT's).



(c) (d) (e) Plan view of corner with ties to at least 4 witness monuments. If in disagreement with previously established corner, show the distances between the two corners and also indicate the ties to the disputed corner.

- 1) Quarter Corner between section 13 & 14 - Oneida County aluminum monument.

BT's per USPLSMR by Roberts (found):

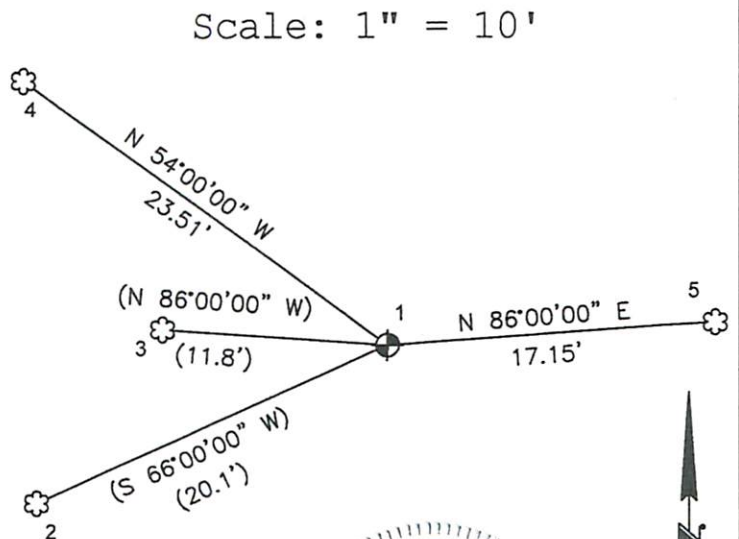
- 2) 14" (Recorded as 9") blazed oak tree
- 3) 14" (Recorded as 7") blazed W. Pine

New BT's:

- 4) 14" Oak
- 5) 12" Poplar

**NOTES**

- 1) All bearing shown are compass
- 2) New BT measured to PK nail on side of tree.
- 3) Old BT's measured to nail on side of tree.



(i) I, Benton A. McMullen certify that the corner location on this record was determined by me or under my direction and control and that this U.S. Public Land Survey Monument Record is correct and complete to the best of my knowledge and belief.

*Benton A. McMullen* February 10, 2022  
Signature Date



Job No.

Index No: L-21  
3807142000