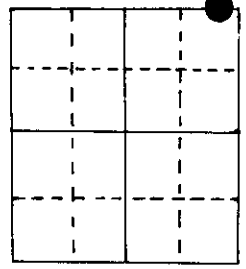


U.S. PUBLIC LAND SURVEY MONUMENT RECORD

Note: This form is intended and designed to fulfill all requirements of Wisconsin Administrative Code, Chapter A-E 5.02, U.S. Public Land Survey Monument Record (3) (a) (b) (c) (d) (e) (f) (g) (h) (i). An additional sheet may be added if necessary to conform with said requirements.

(a) Corner location: Township 38 North
 Range 7 East ~~West~~
 Town/City/Village Lake Tomahawk
 County Oneida

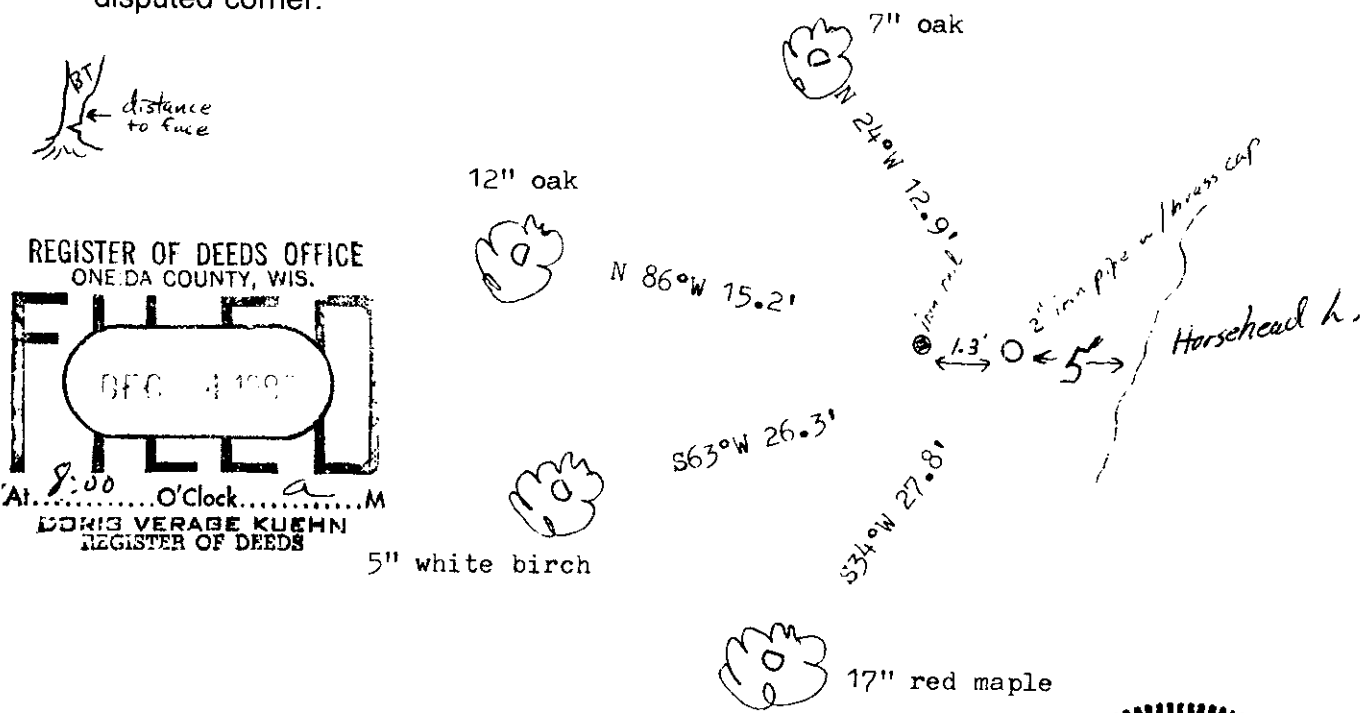


Section 22

(b) (f) (g) (h) Description of monument found at this corner and if it was accepted, state all evidence (material, testimonial, occupational, plats, records, other monuments) used as a basis for accepting. If not accepted or if nothing was found, state evidence used as basis for establishing location. If reestablished through lost corner proportionate methods, indicate all monuments, distances and directions used to establish.

Original by A. Anderson, 1863, OBT's BW 12" N50°E 8 lks., Tam 8" S45°W 9 lks.
~~196~~ R. Badow in 1954 shows an iron pipe here. Does not indicate whether set of found on his map. His BT's oak & 2 N24½°W 12.5', oak 12" N86½°W 14.3'
 J. Griffin in 1964 found iron pipe, BT's on his map, oak 8" N30°W 12.8', oak 16" N80°W 15.0'.
 Seymour, 1987, found iron pipe and both BT's. Also found a 1" iron rod at 1.3' westerly, but the BT's distance fit to the iron pipe. I left the iron rod in place in case it was set for a lot corner (no records found on it).
 Replaced iron pipe with 2" iron pipe W/ brass cap.
 Corner location is the brass cap

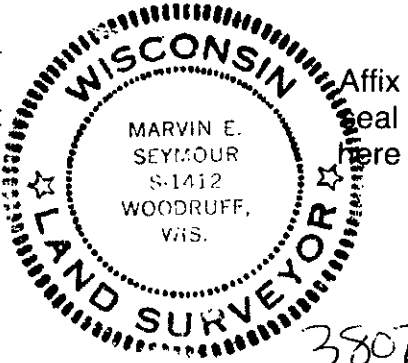
(c) (d) (e) Plan view of corner with ties to at least 4 witness monuments. If in disagreement with previously established corner, show the distances between the two corners and also indicate the ties to the disputed corner.



REGISTER OF DEEDS OFFICE
 ONEIDA COUNTY, WIS.
 DEC 4 1987
 At 8:00 O'Clock a.m.
 DORIS VERABE KUEHN
 REGISTER OF DEEDS

(i) I, Marvin E. Seymour
 (type or print name) certify that the corner location on this record was determined by me or under my direction and control and that this U.S. Public Land Survey Monument Record is correct and complete to the best of my knowledge and belief.

Marvin E. Seymour Dec. 3, 1987
 Signature Date



38071500d 3