

# U.S. PUBLIC LAND SURVEY MONUMENT RECORD

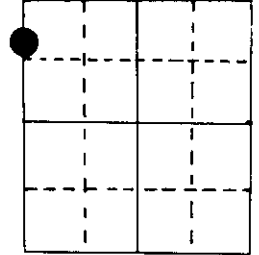
Note: This form is intended and designed to fulfill all requirements of Wisconsin Administrative Code, Chapter A-E 5.02, U.S. Public Land Survey Monument Record (3) (a) (b) (c) (d) (e) (f) (g) (h) (i). An additional sheet may be added if necessary to conform with said requirements.

(a) Corner location: Township 38 North

Range 7 East ~~10~~

Town/~~City/Village~~ Lake Tomahawk

County Oneida



Section 15

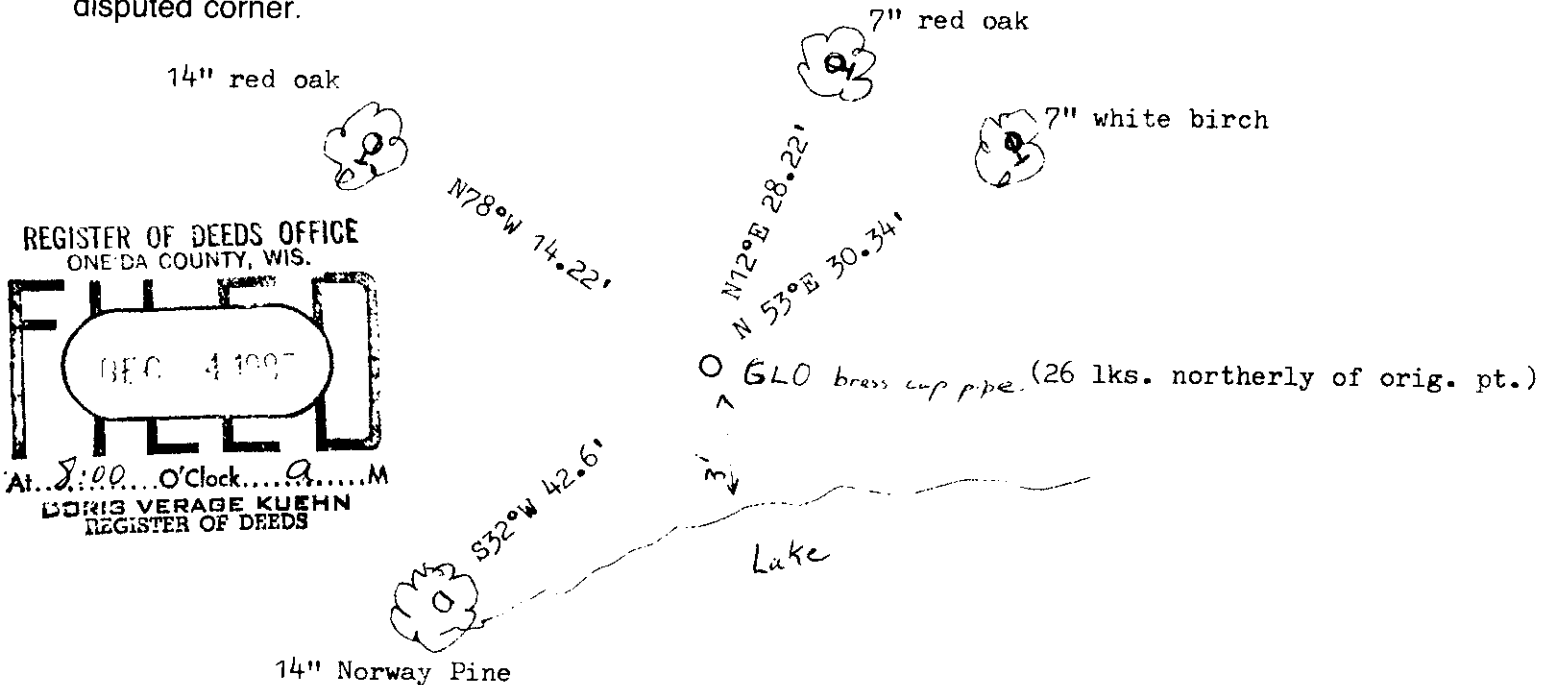
(b) (f) (g) (h) Description of monument found at this corner and if it was accepted, state all evidence (material, testimonial, occupational, plats, records, other monuments) used as a basis for accepting. If not accepted or if nothing was found, state evidence used as basis for establishing location. If reestablished through lost corner proportionate methods, indicate all monuments, distances and directions used to establish.

Original by A. Anderson, 1863, OBT's PW 20" S81½°W 19 lks., PW 10" N 6½°W 22 lks.

1929 Resurvey by GLO found original evidence and set brass cap. 26 lks. north on line to NW 15. BT's made OR 8" N11°E 21 lks., PN 10" S31°W 64 lks. Their map has a distance and bearing error at this point. The angle is at the w.m.c. instead of the original location 26 lks. south.

1987, Seymour, found brass cap and the SW BT. Made more BT's.

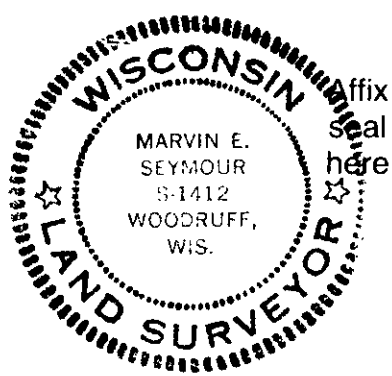
(c) (d) (e) Plan view of corner with ties to at least 4 witness monuments. If in disagreement with previously established corner, show the distances between the two corners and also indicate the ties to the disputed corner.



REGISTER OF DEEDS OFFICE  
ONEIDA COUNTY, WIS.  
**FILED**  
DEC 4 1987  
At 8:00 O'Clock 9 M  
DORIS VERAGE KUEHN  
REGISTER OF DEEDS

(i) I, Marvin E. Seymour  
(type or print name) certify that the corner location on this record was determined by me or under my direction and control and that this U.S. Public Land Survey Monument Record is correct and complete to the best of my knowledge and belief.

Marvin E. Seymour Signature      Dec. 3, 1987 Date



3807163200  
JK-13