

U.S. PUBLIC LAND SURVEY MONUMENT RECORD

Note: This form is intended and designed to fulfill all requirements of Wisconsin Administrative Code, Chapter A-E 7.08 U.S. Public Land Survey Monument Record (3) (a) (b) (c) (d) (e) (f) (g) (h) (i). An additional sheet may be added if necessary to conform with said requirements.

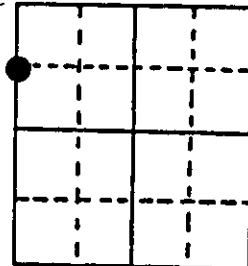
(a) Corner location: Township 38 North Corner: South Wit MC-Big Carr Lake West line of Section 16

Section 16 Range 7 East Original Surveyor: A. Anderson

Town/City/Village Lake Tomahawk

Original B.T.'s: 10" Pw S19°E 7 lks
10" Py ?? 10 lks

County Oneida

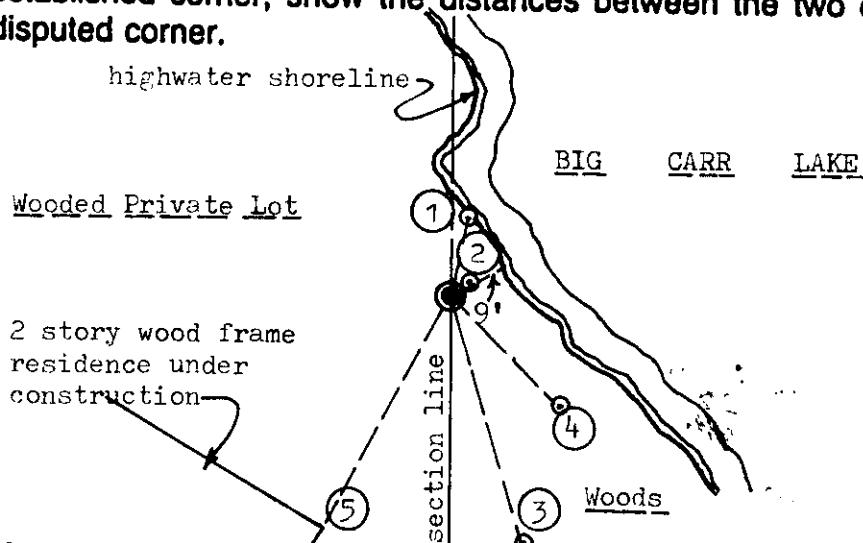


Original Survey Date: August 1863 ● Location

(b) (f) (g) (h) Description of monument found at this corner and if it was accepted, state all evidence (material, testimonial, occupational, plats, records, other monuments) used as a basis for accepting. If not accepted or if nothing was found, state evidence used as basis for establishing location. If reestablished through lost corner proportionate methods, indicate all monuments, distances and directions used to establish. Indicate type of monument found or set and sign post.

Found and accepted a standard 1½" dia. iron pipe monument with stamped WCD brass cap 17" above grade at this corner location and tipped slightly North; I replumbed the monument and secured in ground for new ties. Corner is located in SE corner of private lot on Big Carr Lake at southeasterly end of Wil-Jo Road, 0.25 miles from its junction with County Highway 'D'. WCD and notes by Hassler indicate that a wood post was found at the MC corner location 59.75 chains North of the SW corner of Section 16, and remonumented with the WCD capped iron pipe monument; such record notes also indicate new BTs 9" Oak S19°E 40.0' that I found and used for new ties, and which evidenced upper and lower face blazes shut but plain, also a 7" Maple BT N53°W 9.7', which I also found OK with upper face blaze shut but plain and lower face blaze open and rotting at 10" dia. base. No original GLO survey corner evidence noted in latter records or found this date. WCD brass cap was not stamped when found, so I stamped accordingly. I also placed an orange paint keel cross at drill hole in large boulder for Witness Tie No. 1 below and set a standard white poly 'T' marker post 8" East of corner monument. Recovery completed 6/17/97; no witnesses.

(c) (d) (e) Plan view of corner with ties to at least 4 witness monuments. If in disagreement with previously established corner, show the distances between the two corners and also indicate the ties to the disputed corner.



Witness Monument Ties:

- ① ½" dia. drill hole set in top of high point of large rock boulder on lake shoreline, N10°E 12.80'.
- ② New BT 3" Maple N55°E 3.59'; BT washer not set in face at DBH.
- ③ Record BT 14" Oak S16°E 40.20'.
- ④ New BT 5" Pr S44°E 24.18'.
- ⑤ SE corner of block foundation S28°W 41.80' at grade.

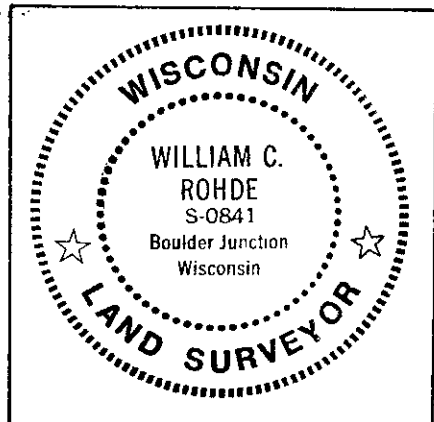
Scale: 1" = 30'

Unless otherwise indicated, all BT witness monument ties are to a 1/4" dia. by 2.5" long PK nail with 1.25" dia. steel washer set in unblazed right face bark; and a PK nail with 2" dia. steel washer stamped BT also set in unblazed front face bark of each BT at DBH. All previous corner recovery notes from Wisconsin DNR and/or Oneida County survey records.

(i) I, William C. Rohde, RLS 841
(type or print name) certify that the corner location on this record was determined by me or under my direction and control and that this U.S. Public Land Survey Monument Record is correct and complete to the best of my knowledge and belief.

William C. Rohde
Signature

June 18, 1977
Date



Index No. K L 9

3807173100