

U.S. PUBLIC LAND SURVEY MONUMENT RECORD

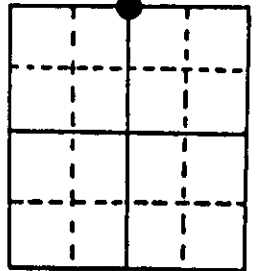
Note: This form is intended and designed to fulfill all requirements of Wisconsin Administrative Code, Chapter A-E 7.08 U.S. Public Land Survey Monument Record (3) (a) (b) (c) (d) (e) (f) (g) (h) (i). An additional sheet may be added if necessary to conform with said requirements.

(a) Corner location: Township 38 North Corner: North 1/4

Section 19 Range 7 East Original Surveyor: Anderson/GLO

Town/City/Village Town of Lake Tomahawk Original B.T.'s: 9" Bw S42°E 14 lks
8" Mr N70°E 16 lks

County Oneida

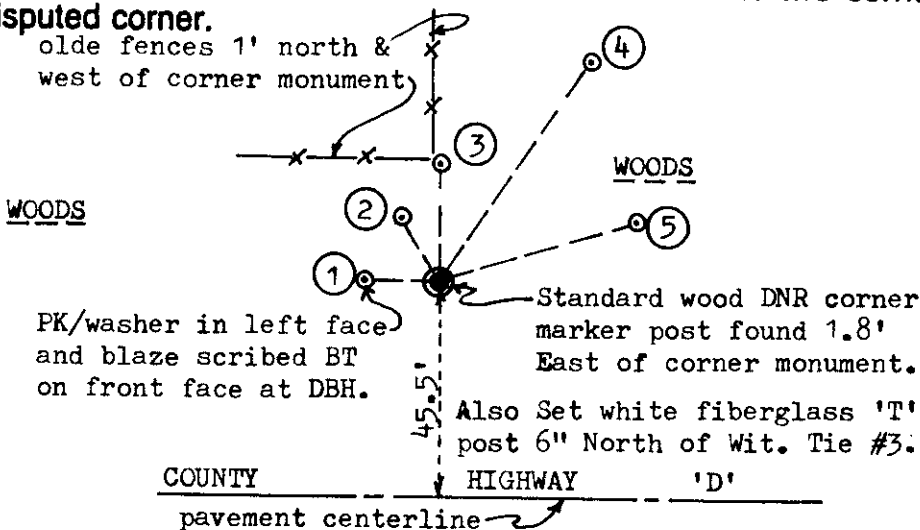


Original Survey Date: August 1863 ● Location

(b) (f) (g) (h) Description of monument found at this corner and if it was accepted, state all evidence (material, testimonial, occupational, plats, records, other monuments) used as a basis for accepting. If not accepted or if nothing was found, state evidence used as basis for establishing location. If reestablished through lost corner proportionate methods, indicate all monuments, distances and directions used to establish. Indicate type of monument found or set and sign post.

Found and accepted standard 2" iron pipe monument with stamped DNR brass cap 9" above grade at corner. No original GLO corner evidence recovered. A thorough field search also revealed no other corner evidence or accessories in addition to that recorded herein. In 1981, during a resurvey and subdivision of Section 19, Copp, Seymour and Vissers established this corner location from a found 2" iron pipe witness monument and old wood post scribed "1/4 Cor 25'S" at the junction of old fences west and north, by solar bearing South 25.00'; prior to setting the new monument they had dug for and found no other monument at corner location. I also found the 2" iron pipe witness monument and used it for new ties below. I also found the old scribed wood witness post leaning against old wood fence corner post 1' North and 1' West of corner and an old yellow painted 6" dia. wood highway R/W post lying nearly flat on ground west of witness monument pipe. The 1981 BTs by DNR were 11" Bw N52°W 15.50', which I found as tall dead stub N50°W with upper and lower face blazes plain; 20" Pw N30°E 54.28' which I found as 24" Pw N34°E for new ties below, upper and lower face blazes plain; and a 16" Pw N69°E 42.38' which I found as 20" Pw N73°E for new ties below, upper and lower face blazes also plain. A plat of this survey by DNR in 1981 is available at the Trout Lake office near Boulder Junction. This recovery completed October 11, 1996, no witnesses present.

(c) (d) (e) Plan view of corner with ties to at least 4 witness monuments. If in disagreement with previously established corner, show the distances between the two corners and also indicate the ties to the disputed corner.

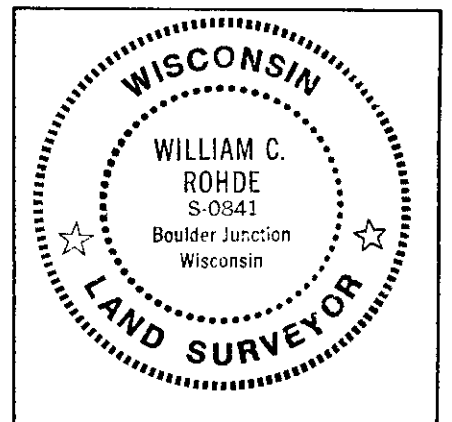


Witness Monument Ties:

- ① 7" Pw N85°W 15.28'. (New)
- ② 8" Bw N29°W 15.02'. (New)
- ③ 2" dia. iron pipe witness monument North 25.00'.
- ④ 24" Pw N34°E 55.25' (Older BT with upper & lower blazes plain)
- ⑤ 20" Pw N73°E 42.99' (Older BT with upper & lower blazes plain)

Unless otherwise indicated, all BT witness monument ties are to a 1/4" dia. by 2.5" long PK nail with 1.25" dia. steel washer set in unblazed right face bark; and a PK nail with 2" dia. steel washer stamped BT also set in unblazed front face bark of each BT at DBH. All previous corner recovery notes from Wisconsin DNR and/or Oneida County survey records.

Scale: 1" = 40'



(i) I, William C. Rohde, RLS 841
(type or print name) certify that the corner location on this record was determined by me or under my direction and control and that this U.S. Public Land Survey Monument Record is correct and complete to the best of my knowledge and belief.

William C. Rohde 10/19/96
Signature Date

Index No. N 3