

# U.S. PUBLIC LAND SURVEY MONUMENT RECORD

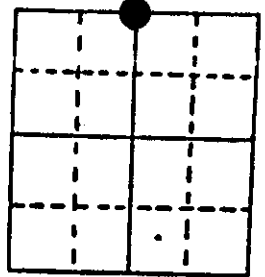
Note: This form is intended and designed to fulfill all requirements of Wisconsin Administrative Code, Chapter A-E 7.08 U.S. Public Land Survey Monument Record (3) (a) (b) (c) (d) (e) (f) (g) (h) (i). An additional sheet may be added if necessary to conform with said requirements.

(a) Corner location: Township 38 North

Range 7 East ~~West~~

Town/City/Village LAKE TOMAHAWK

County ONEIDA



Section 30

(b) (f) (g) (h) Description of monument found at this corner and if it was accepted, state all evidence (material, testimonial, occupational, plats, records, other monuments) used as a basis for accepting. If not accepted or if nothing was found, state evidence used as basis for establishing location. If reestablished through lost corner proportionate methods, indicate all monuments, distances and directions used to establish. Indicate type of monument found or set and sign post.

August, 1863: Alexander Anderson set a wood post:

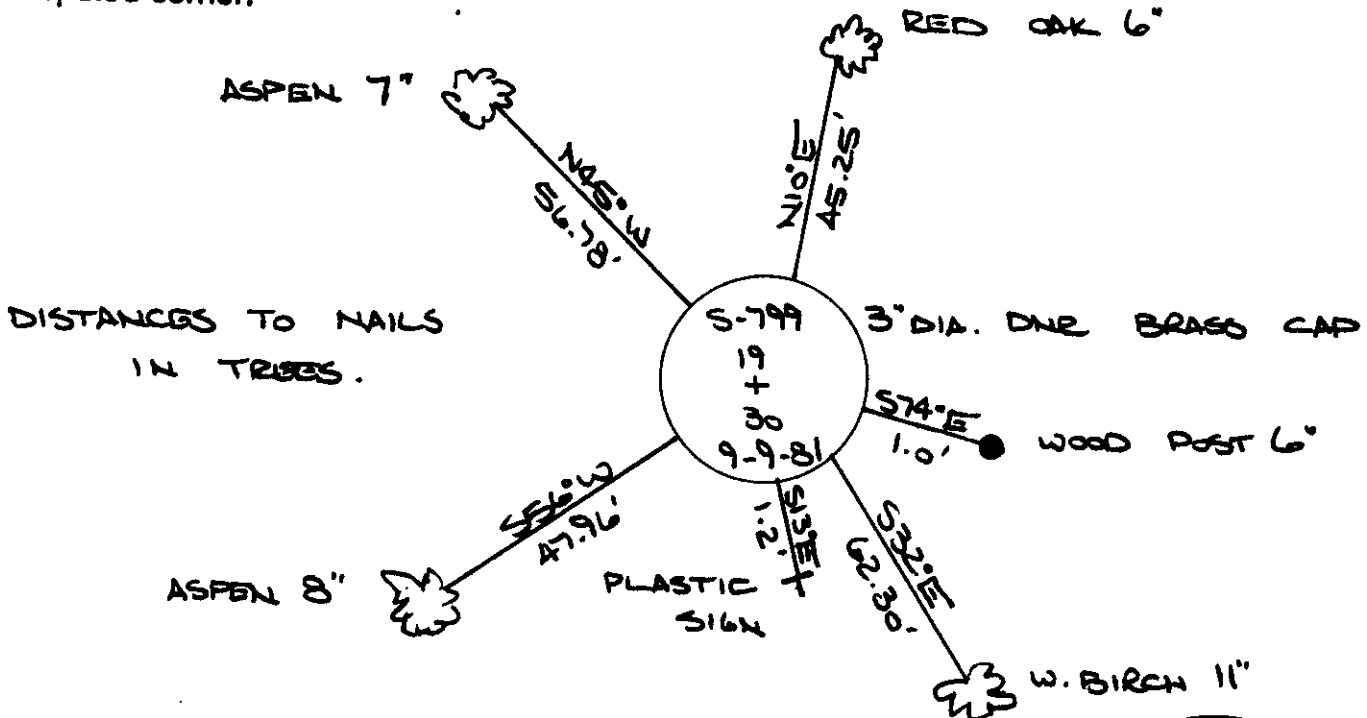
Birch 12" S25E, 24 lks., W. Pine 10" N $\frac{1}{2}$ W, 19 lks.

March 28, 1938: Vernon Maine set  $\frac{1}{4}$  stake: cedar stake no BTs near also set iron pipe.

December 21, 1981: Map B-92 by Fred Copp shows corner as DNR Brass Cap set over 1" IP found: BW 8" S31E, 62.20', OR 3" N8E, 45.44', ASP 6" S54W, 47.70'.

August 1, 1989: Jeffrey W. Austin found and accepted a 3" dia. DNR brass capped iron pipe: set nail in W. Birch 11" S32E, 62.30' (old BT), set nail in R. Oak 6" N10E, 45.25' (old BT), set nail in Aspen 8" S56W, 47.96' (old BT), set nail in Aspen 7" N45W, 56.78' set plastic sign post S13E, 1.2', found 6" dia. wood post S74E, 1.0', centerline of Big Buck Rd. North, 20'.

(c) (d) (e) Plan view of corner with ties to at least 4 witness monuments. If in disagreement with previously established corner, show the distances between the two corners and also indicate the ties to the disputed corner.



(i) JEFFREY W. AUSTIN S-1885  
 (type or print name) certify that the corner location on this record was determined by me or under my direction and control and that this U.S. Public Land Survey Monument Record is correct and complete to the best of my knowledge and belief.



Index No. E-3

Signature

AUGUST 7, 1989

Date

3807190020