

At \_\_\_\_\_ O'Clock \_\_\_\_\_ M  
**THOMAS H. LEIGHTON**  
REGISTER OF DEEDS

This form is intended to fulfill the requirements of Chapter A-E7.08 (3)(a) thru (i) U.S. Public Land Survey Monument Location Record, Wisconsin Administrative Code. Use the reverse side of form for continuation.

**U.S. PUBLIC LAND SURVEY MONUMENT LOCATION RECORD**

Recorders Data

USPLS CORNER: WEST WITNESS MC SECTION: 29 TOWNSHIP: 38 NORTH RANGE: 7 EAST

NAME OF WATERWAY FOR M.C. CORNER : WIND PUDDING LAKE SECTION LINE: NORTH

~~(CITY)(VILLAGE)~~(TOWN) OF: LAKE TOMAHAWK COUNTY OF: ONEIDA

Description of monument found or placed and all other evidence used as the basis for monument location; including monuments and measurements required if the corner location was reestablished by lost corner proportionate methods. Also indicate name of the original surveyor, original survey date and the corner monument, bearing trees, witness or other reference monuments established, including measured bearing and distance ties, from available survey records.

In August 1863, Alexander Anderson/GLO set an original wood post as MC and noted OBTs: a 12" Aspen N28°E 9 links and a 12" Aspen S69°W 15 links; all are now obliterated.

On Wind Pudding Shores subdivision plat by James G. Griffin/RLS 755 filed in Oneida County records, he notes a 2" dia. iron pipe as this Witness MC and a 9" Oak BT N33°W 21.2'.

On June 29, 2006 I found the 2" dia. iron pipe flush at grade about midway down brushy slope to westerly edge of wetland lakeshore; I also found the plat noted BT as a 12" Oak with upper and lower blaze scars plain N30°W at 21'+/-.

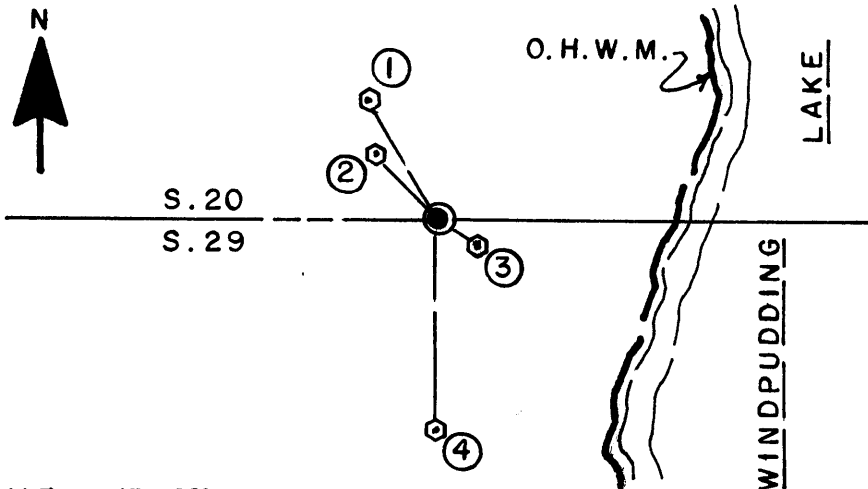
I carefully pulled the older 2" dia. x 32" long iron pipe and drove a standard 2" dia. x 30" long aluminum monument with stamped Oneida County cap into the old iron pipe soil cavity to 5" above grade.

New monument falls 37'+/- West of existing OHWM lakeshore vegetation line bearing N20°E +/- this date.

Corner is at the NE corner of improved Lot 24 of subject plat at Fire No. 8690 South Wind Pudding Drive.

There were no direct witnesses.

Plan view map of monument location with bearing and distance ties to a minimum of four(4) described witness or reference monuments of concrete, natural stone, iron, live bearing trees or equivalent material. If applicable, also show a minimum of two(2) bearing and distance ties to any other monument found and not accepted; including the bearing and distance from the accepted monument.



**WITNESS MONUMENT TIES:**

- ① Old 12" Oak BT with upper & lower blaze scars plain N30°W 21.57'.
- ② New 12" Mr BT of double N50°W 14.22'.
- ③ New 10" Mr BT S33°E 7.13'.
- ④ New 9" Pw BT South 32.84'.

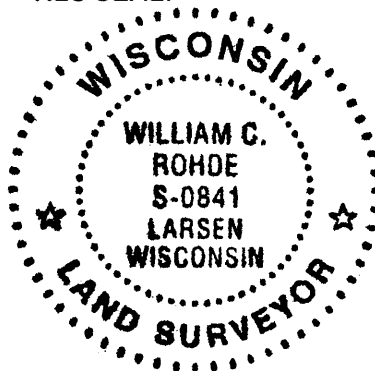
I painted BT#1 blaze scars orange and nailed a standard BT sign to upper face.

I set a standard white poly 'T' marker post 0.8' East of the new monument.

SCALE: 1" = 30'

Unless otherwise indicated, all bearing tree ties are to a .25" dia. by 2.5" long PK nail with a 1.25" dia. steel washer driven into unblazed right face and a .25" dia. by 2.5" long PK nail with a 2" dia. steel washer stamped BT is also driven into unblazed face of bearing tree at DBH; the basis for measured bearings is by compass to nearest degree and all tie distances are measured horizontal by steel tape corrected to nearest 1/100th feet at standard temperature of 68° F.

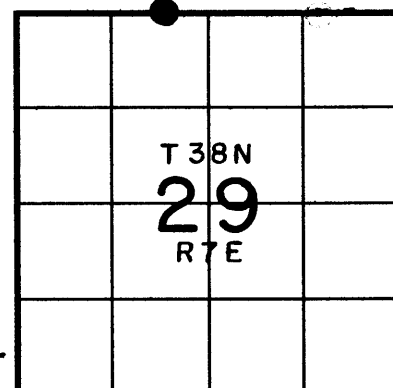
**RLS SEAL:**



**LAND SURVEYOR CERTIFICATE:**

I, William C. Rohde, hereby certify that I am duly licensed as a Professional Land Surveyor in the State of Wisconsin; that this USPLS monument location was determined by me and/or under my direct supervision and control; and that this U.S. Public Land Survey Monument Location Record is true and correct to the best of my knowledge and belief.

Signed *William C. Rohde*  
William C. Rohde RLS 841



**SECTION LOCATION MAP**

INDEX NO. R 6-7  
3807200023