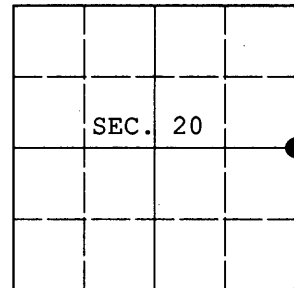


U.S. PUBLIC LAND SURVEY MONUMENT RECORD

Note: This form is intended and designed to fulfill all requirements of Wisconsin Administrative Code, Chapter A-E 7.08 U.S. Public Land Survey Monument Record (3) (a) (b) (c) (d) (e) (f) (g) (h) (i). An additional sheet may be added if necessary to conform with said requirements.

(a) CORNER LOCATION: Plane Coordinates
 1/4 Cor. of Secs. 20 & 21 N:
 Township 38 North E:
 Range 7 East of the 4th P.M. Datum:
 Town of Lake Tomahawk County of Oneida



(b) HISTORY OF ORIGINAL CORNER ESTABLISHMENT

Original Surveyor: Alexander Anderson Original Accessories:
 Date of Survey: Commenced: Aug. 15, 1863 white pine 12" S2°E, 233 lks.
 Completed: Aug. 27, 1863 maple 6" S21°W, 235 lks.

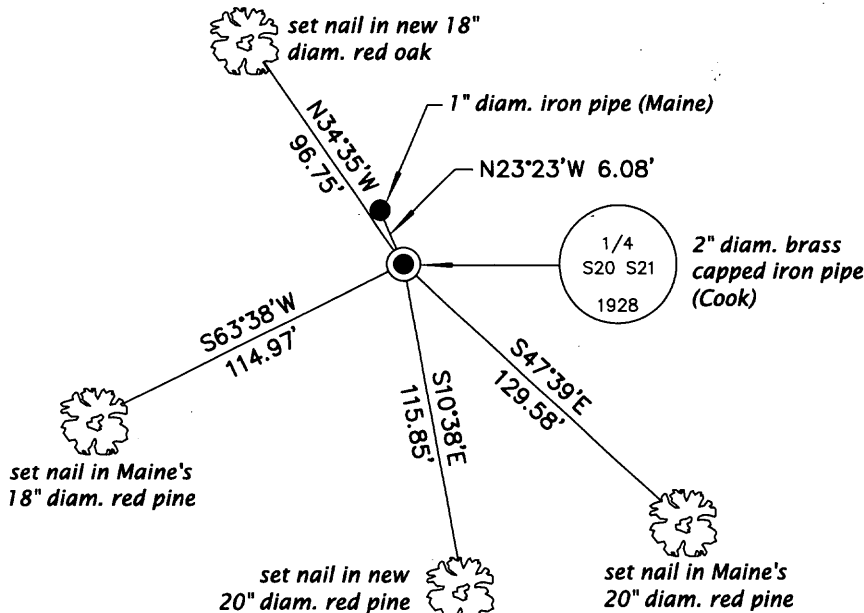
(b) (f) (g) (h) Description of monument found at this corner and if it was accepted, state all evidence (material, testimonial, occupational, plats, records, other monuments) used as a basis for accepting. If not accepted or if nothing was found, state evidence used as basis for establishing location. If re-established through lost corner proportionate methods, indicate all monuments, distances and directions used to establish. Indicate type of monument and sign post found or set.

1928: Omitted lands investigation by Wesson Cook, US Transitman of the GLO. Cook finds a wood post he indicates was set by the county surveyor 20 years prior. He sets a 2" diam., 36" long iron pipe with GLO brass cap with the following accessories: poplar 4" S20°E, 1.66 ch.; poplar 6" N35°W, 1.26 ch.

December 10, 1938: Notes by V.M. Maine on page 229 of his 1938 book. He indicates he positioned the corner location from two large stones by D.H. Vaughan bearing N19°E, 3.41 and S23°E, 1.77-1/4. He sets a new wood post and records the following accessories: YP 14" S50°W, 1.748; YP 10" S53°E, 2.05.

October 31, 2011: I found two monuments at the corner location. I found Cook's 2" diam. iron pipe with 2-1/2" diam. GLO brass cap projecting 14" above the bog. I also found what I believe is a perpetuation of Maine's wood post, a 1" diam. iron pipe flush with the bog. I find it perplexing that Maine would have ignored Cook's monument without mentioning that fact in his field notes. I believe he lacked Cook's field notes and the snow conditions were such that he simply did not see the GLO monument. Being that he used Cook's monuments in other locations, I feel he would have used the GLO monument had he been aware of its existence. The relatively small difference between the two monuments can be explained by the comparatively poor geometry between the corner and Vaughan's stones. As such, I accept Cook's monument as the best remaining evidence of the original corner location. I found or established accessories as shown below and set a white plastic sign post bearing South, 1 ft. dist.

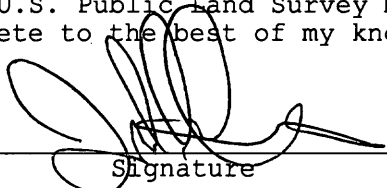
(c) (d) (e) Plan view of corner with ties to at least 4 witness monuments. If in disagreement with previously established corner, show the distances between the two corners and also indicate the ties to the disputed.



REGISTER OF DEEDS OFFICE
 ONEIDA COUNTY
FILED
 JAN 16 2012
 AT _____ O'CLOCK _____ M
THOMAS H. LEIGHTON
 REGISTER OF DEEDS

NO SCALE

(i) I, Jeffrey W. Austin, Registered Land Surveyor No. S-1885, hereby certify that the corner location on this record was determined by me or under my direction and control and that this U.S. Public Land Survey Monument Record is correct and complete to the best of my knowledge and belief.


 Signature

DEC. 31, 2011
 Date



3807202000 (INDEX NO. P-9)