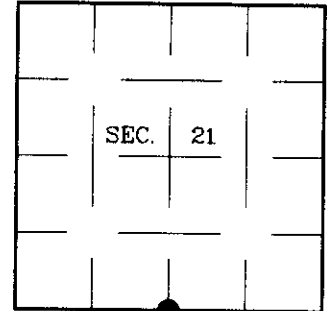


# U.S. PUBLIC LAND SURVEY MONUMENT RECORD

Note: This form is intended and designed to fulfill all requirements of Wisconsin Administrative Code, Chapter A-E 7.08 U.S. Public Land Survey Monument Record (3)(a)(b)(c)(d)(e)(f)(g)(h)(i). An additional sheet may be added if necessary to conform with said requirements.

(a) CORNER LOCATION:  
 1/4 Corner common to Secs. 21 and 28  
 Township 38 North  
 Range 7 East, 4th Principal Meridian  
 Town of Lake Tomahawk

Plane Coordinates  
 X:  
 Y:  
 Datum:  
 County of Oneida



(b) HISTORY OF ORIGINAL CORNER ESTABLISHMENT

Original Surveyor: Alexander Anderson  
 Date of Survey: Commenced: August 15, 1863  
 Completed: August 27, 1863

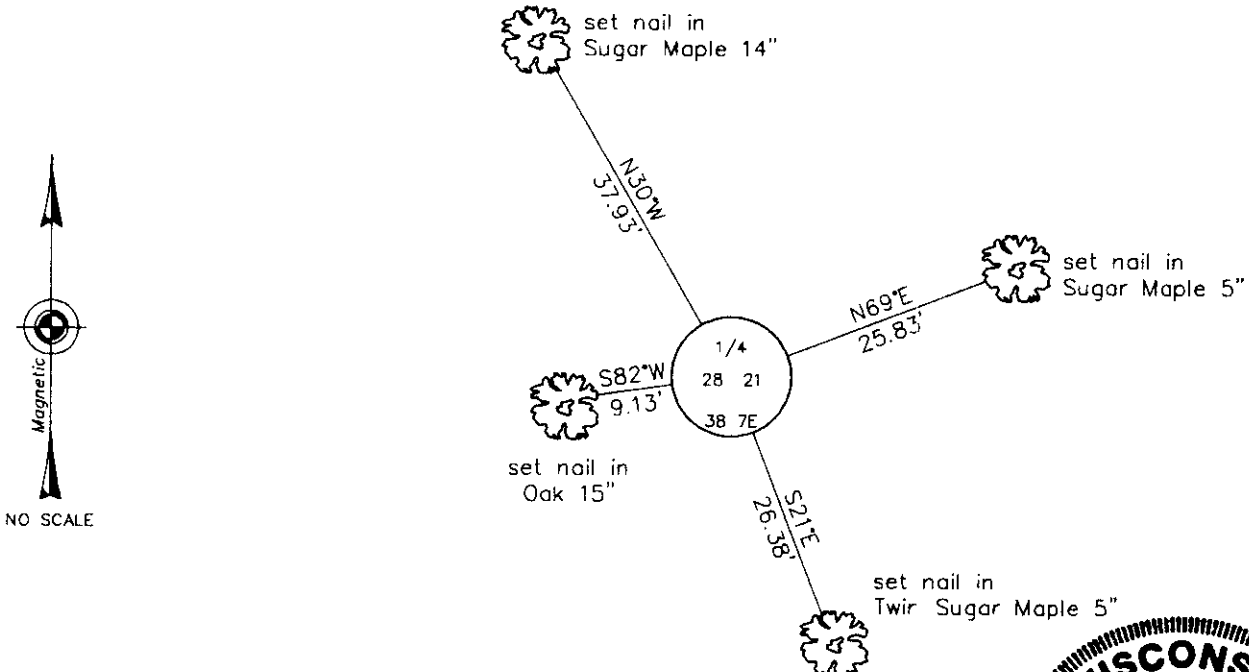
Original Accessories:  
 Aspen 14 N40°W 11 lks.  
 Maple 6 S74°W 13 lks.

(b)(f)(g)(h) Description of monument found at this corner and if it was accepted, state all evidence (material, testimonial, occupational, plats, records, other monuments) used as a basis for accepting. If not accepted or if nothing was found, state evidence used as basis for establishing location. If reestablished through lost corner proportionate methods, indicate all monuments, distances and directions used to establish. Indicate type of monument and sign post found or set.

December, 1938: OCS Map #C-549 by V.M. Maine indicates corner is 'original 1/4 stake' with the following accessories: Y. Pine 14 S8°W, 0.978; Blk. Oak 6 N46°E, 0.358.

June 6, 2001: I found and accepted an iron post, 2-1/2 ins. diam., firmly set with a 3 ins. diam. WCD brass cap, 24 ins. above the ground surface, marked as shown below. Maine's Oak stump bears N54°E, 23-1/2 ft. dist. Maine's wind-thrown Red Pine, 24 ins. diam. bears S5°E, 65 ft. dist. I found or established accessories as shown below and set a plastic sign post bearing Northeast, 1 ft. dist.

(c)(d)(e) Plan view of corner with ties to at least 4 witness monuments. If in disagreement with previously established corner, show the distances between the two corners and also indicate the ties to the disputed.

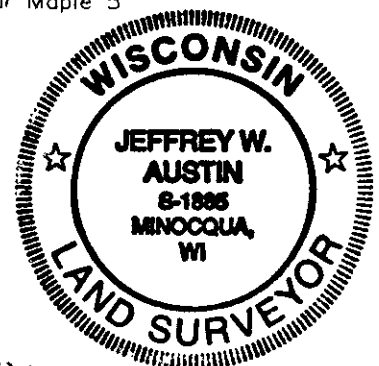


(i) I, Jeffrey W. Austin, Registered Land Surveyor No. S-1885, hereby certify that the corner location on this record was determined by me or under my direction and control and that this U.S. Public Land Survey Monument Record is correct and complete to the best of my knowledge and belief.

Signature

Date

8-27-01



INDEX NO. R-11

3807210020