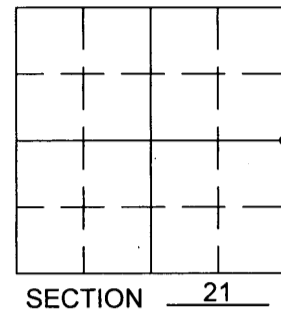
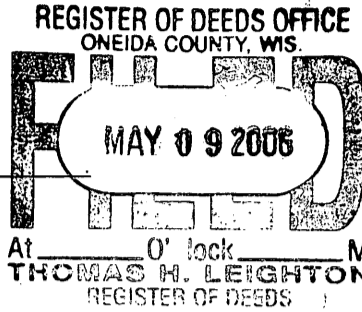


U.S PUBLIC LAND SURVEY MONUMENT RECORD

Note: This form is intended and designed to fulfill all requirements of Wisconsin Administrative Code, Chapter A-E 7.08 U.S. Public Land Survey Monument Record (3) (a) (b) (c) (d) (e) (f) (g) (h) (i). An additional sheet may be added if necessary to conform to said requirements.

(a) Corner location: Township 38 North
 Range 7 East
 Town/City/Village LAKE TOMAHAWK
 County ONEIDA



(b) (f) (g) (h) Description of monument found at this corner and if it was accepted, state all evidence (material, testimonial, occupational, plats, records, other monuments) used as a basis for accepting. If not accepted or if nothing was found, state evidence used as basis for establishing locations. If reestablished through lost corner proportionate methods, indicate all monuments, distances and directions used to establish. Indicate type of monument found or set and sign post.

1863, A. Anderson, Set 1/4 Post with Bt's: Maple 8" S 60° E 26 Links

1938 Map by Maine shows Original Oak Stake Found with New Bt's: O 7" N 53 1/2° W 31.9 Links
 PW 12" S 39° W 18.1 Links
 PY 14" N 70° E 25 Links

1977, Seymour, found W.C.D. Brass Cap and Maine's Bt's in good condition. New Bt's:
 Hemlock 22" West 14.7'
 OR 8" S 17° E 29.1'

1987, Seymour, found W.C.D. Brass Cap and Bt's (some tipped over from 1984 tornado) No trees left to make Bt's so set wood marker post w/aluminum tag 1' north. Corner is on hillside 600' east of house & 200' south of swamp area. See Seymours U.S.P.L.S. Monument Record Dated December 3rd, 1987 for Bt's.

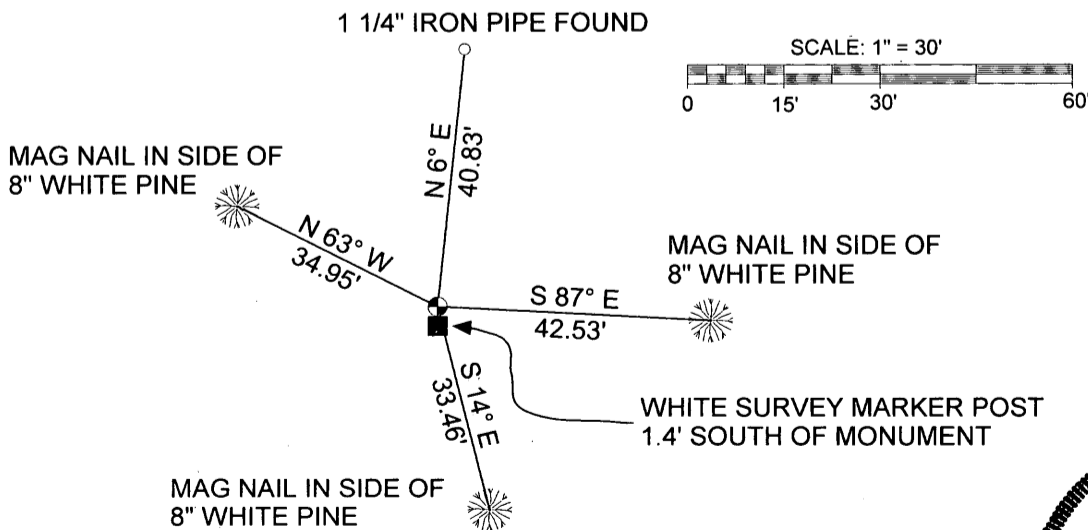
June 12, 1997, Survey Map B 3689 by William E. Bandow, recorded at the Oneida County Land Information Office, calls for Found Oneida Co Monument.

May 20, 1998, Survey Map B 3922 by Russell F. Brown, recorded at the Oneida County Land Information Office, calls for Found 1 1/2" Capped Iron Pipe.

March 21, 2001, Survey Map B 4824 by William E. Bandow, recorded at the Oneida County Land Information Office, calls for Found Oneida Co Monument.

May, 2006, I Found a 2 1/2" Iron Pipe with a 3" W.C.D. Brass Cap stamped to identify location with a Wood Marker Post with Aluminum Tag 1' North. All Bt's are obliterated (up-rooted and decomposing). Established New Bt's as shown Below.

(c) (d) (e) Plan view of corner with ties to at least 4 witness monuments. If in disagreement with previously established corner, show the distances between the two corners and also indicate the ties to the disputed corner.



(i) I, Benton A. McMullen certify that the corner location on this record was determined by me or under my direction and control and that this U.S. Public Land Survey Monument Record is correct and complete to the best of my knowledge and belief.

Benton A. McMullen
 Signature Date 5/5/06



P 13

3807212000