

# U.S. PUBLIC LAND SURVEY MONUMENT RECORD

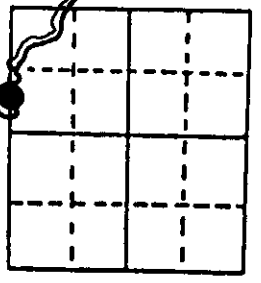
**Note:** This form is intended and designed to fulfill all requirements of Wisconsin Administrative Code, Chapter A-E 7.08 U.S. Public Land Survey Monument Record (3) (a) (b) (c) (d) (e) (f) (g) (h) (i). An additional sheet may be added if necessary to conform with said requirements.

(a) Corner location: Township 38 North Corner: Horsehead Lake  
Wit SMC - West Line

Section 23 Range 7 East Original Surveyor: A. Anderson/GLO

Town/City/Village Lake Tomahawk Original B.T.'s: 7" Bw S32°E 8 lks  
6" T. S67°W 19 lks

County Oneida

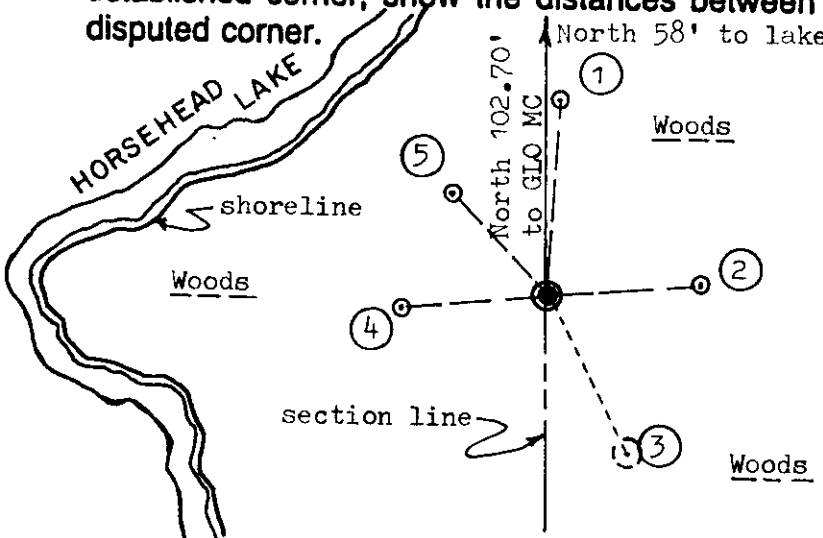


Original Survey Date: August 1863 ● Location

(b) (f) (g) (h) Description of monument found at this corner and if it was accepted, state all evidence (material, testimonial, occupational, plats, records, other monuments) used as a basis for accepting. If not accepted or if nothing was found, state evidence used as basis for establishing location. If reestablished through lost corner proportionate methods, indicate all monuments, distances and directions used to establish. Indicate type of monument found or set and sign post.

Found and accepted a standard 2" dia. iron pipe monument with stamped WCD brass cap 26" above grade and undisturbed at this corner location. This corner is located on north slope of a 6'+/- high knoll on point into lake north of existing boat landing and blacktop auto parking lot at dam on outlet of Horsehead Creek, and is accessible by foot paths over the creek dam/bridge. Both GLO OBTs are now obliterated. In 1961, Berndt/WCD located original GLO MC location in lake from found SW GLO OBT SW Tamarack stump remains, so he set this WitMC monument on the west line of Section 23 19.00 chains North of the west 1/4 corner of Section 23 and 1.556 chains South of the original GLO MC point in lake, and he noted a 4 ft boulder crown S27°E 28 lks and marked a 6" Ms N58°W 12.5 lks which is now a 6" Ms tall dead stub with upper & lower face blazes and scribing plain. In 1975, Copp/WCD found Berndts IP monument and BTs OK and tied the WitMC monument to his survey for Horsehead Lake/Creek Dam Easement per Exhibit Map 'A' in Section 23 file folder at Wisconsin DNR Trout Lake office. East shoreline of Horsehead Lake was measured from WitMC corner monument and drafted to scale on sketch below. I also found an older BT 8" Ms N 54°E with upper & lower face blazes plain, but no record available; and also found an older 9" Bw BT S37°E with upper & lower face blazes plain and a WCD aluminum corner marker plate nailed onto face, but no record available. Recovery completed November 4, 1996; no witnesses.

(c) (d) (e) Plan view of corner with ties to at least 4 witness monuments. If in disagreement with previously established corner, show the distances between the two corners and also indicate the ties to the disputed corner.



**Witness Monument Ties:**

- ① 8" Fir New BT N04°E 20.34'.
- ② 6" Fir New BT N85°E 16.05'.
- ③ Crown of large boulder S27°E 28 lks per WCD record checks OK.
- ④ 7" Fir New BT S86°W 15.36'.
- ⑤ 6" Fir New BT N42°W 14.40'.

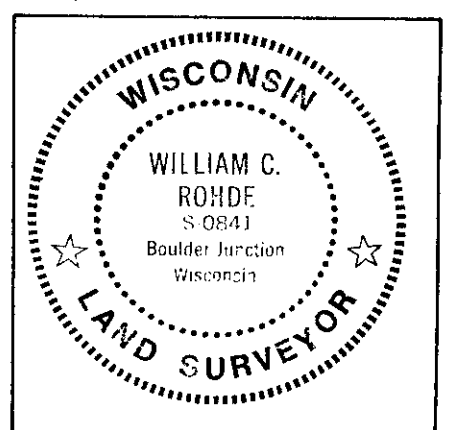
Note: Standard white fiberglass 1" post set 1' west of corner.

Unless otherwise indicated, all BT witness monument ties are to a 1/4" dia. by 2.5" long PK nail with 1.25" dia. steel washer set in unblazed right face bark; and a PK nail with 2" dia. steel washer stamped BT also set in unblazed front face bark of each BT at DBH. All previous corner recovery notes from Wisconsin DNR and/or Oneida County survey records.

Scale: 1" = 20'

(i) I, William C. Rohde, RLS 841  
 (type or print name) certify that the corner location on this record was determined by me or under my direction and control and that this U.S. Public Land Survey Monument Record is correct and complete to the best of my knowledge and belief.

William C. Rohde March 27, 1997  
 Signature Date



Index No. O-P-17

3807222600