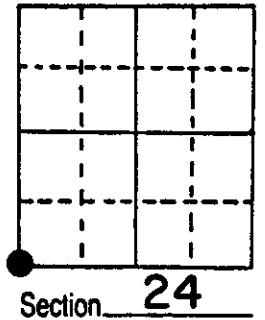


# U.S. PUBLIC LAND SURVEY MONUMENT RECORD

Note: This form is intended and designed to fulfill all requirements of Wisconsin Administrative Code, Chapter A-E 5.02, U.S. Public Land Survey Monument Record (3) (a) (b) (c) (d) (e) (f) (g) (h) (i). An additional sheet may be added if necessary to conform with said requirements.

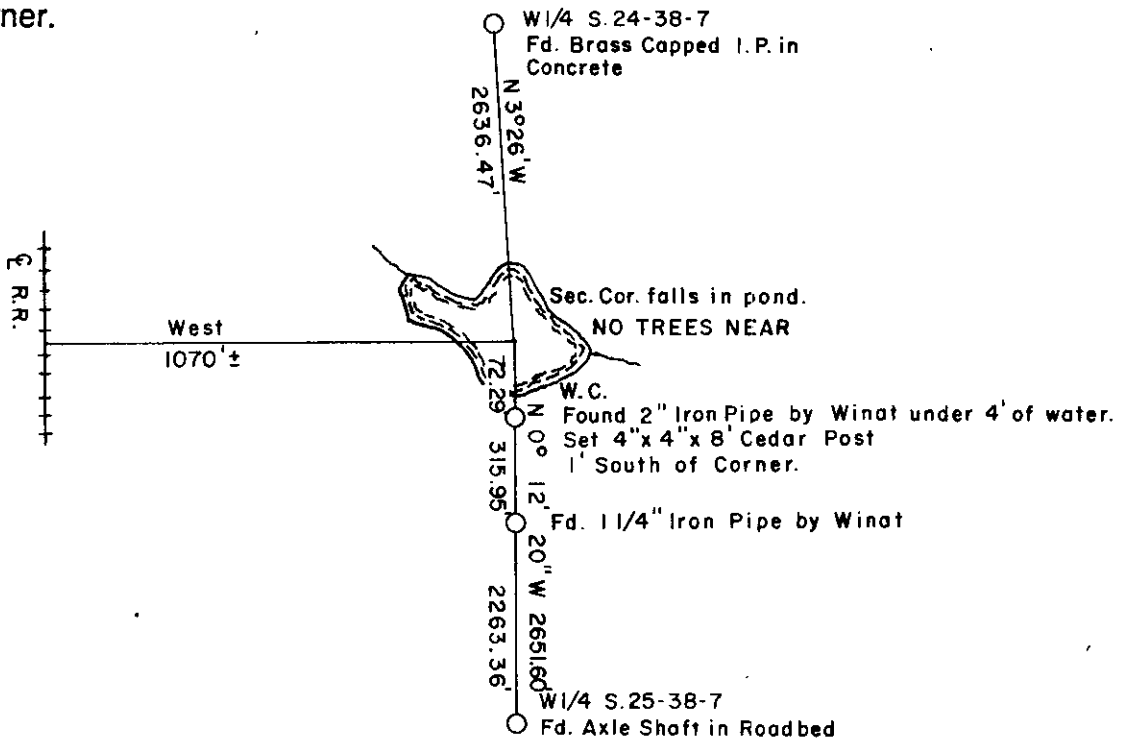
(a) Corner location: Township 38 North  
 Range 7 East/West  
 Town/City/Village Lake Tomahawk  
 County Oneida



(b) (f) (g) (h) Description of monument found at this corner and if it was accepted, state all evidence (material, testimonial, occupational, plats, records, other monuments) used as a basis for accepting. If not accepted or if nothing was found, state evidence used as basis for establishing location. If reestablished through lost corner proportionate methods, indicate all monuments, distances and directions used to establish.

Corner by Alexander Anderson in 1863. North between 25 & 26, 79.00 hit pond & set witness corner. BT's Tam. 9" N59½E 57lks, Tam. 6" S803/4E 84lks. Dorr recovered corner in 1891. Vaughan recovered corner in 1901. Hall found BT stumps in 1930. His notes say he set a concrete monument. R. Winat searched for Hall's corner in 1970 and did not find it. He set a witness corner as shown below from measurements of previous surveys. I searched for Hall's corner and did not find it. I accept Winat's position. No trees near.

(c) (d) (e) Plan view of corner with ties to at least 4 witness monuments. If in disagreement with previously established corner, show the distances between the two corners and also indicate the ties to the disputed corner.



(i) I, WILLIAM E. BANDOW R.L.S. 1182  
 (type or print name) certify that the corner location on this record was determined by me or under my direction and control and that this U.S. Public Land Survey Monument Record is correct and complete to the best of my knowledge and belief.

William E. Bandow 2-28-86  
 Signature Date



Index No. R-21

3807230000