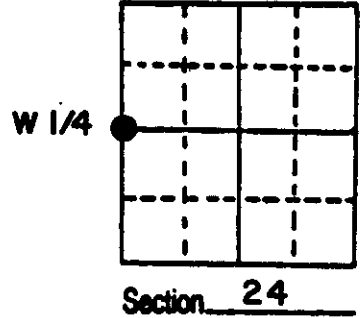


U.S. PUBLIC LAND SURVEY MONUMENT RECORD

Note: This form is intended and designed to fulfill all requirements of Wisconsin Administrative Code, Chapter A-E 5.02, U.S. Public Land Survey Monument Record (3) (a) (b) (c) (d) (e) (f) (g) (h) (i). An additional sheet may be added if necessary to conform with said requirements.

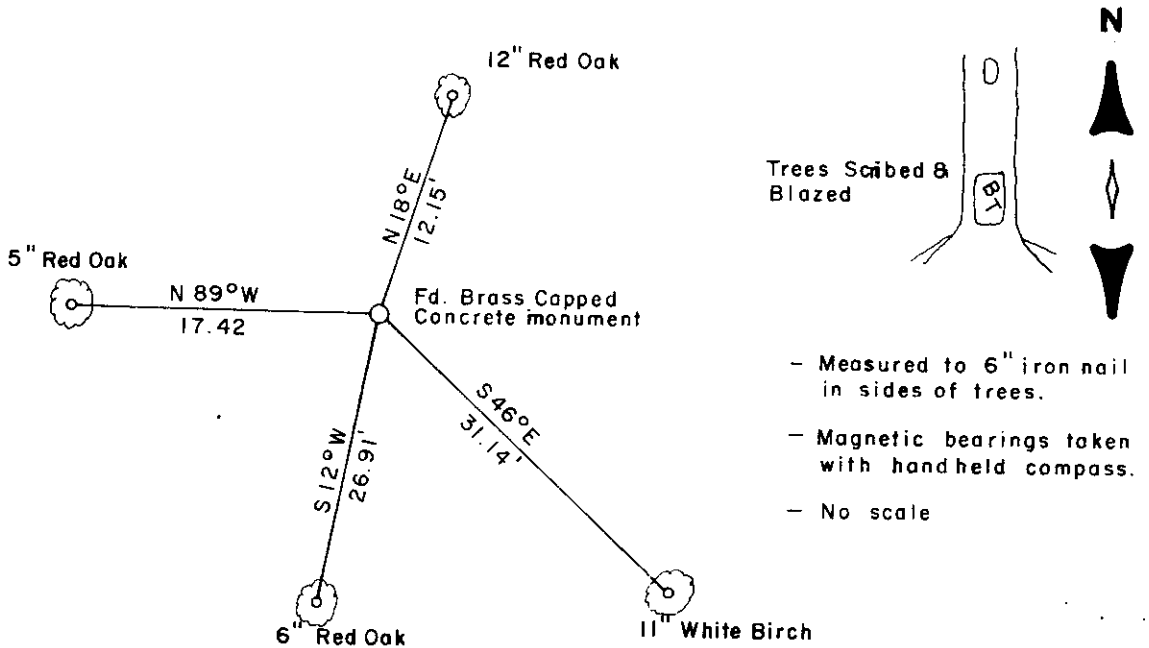
(a) Corner location: Township 38 North
 Range 7 East/West
 Town/City/Village Lake Tomahawk
 County Oneida



(b) (f) (g) (h) Description of monument found at this corner and if it was accepted, state all evidence (material, testimonial, occupational, plats, records, other monuments) used as a basis for accepting. If not accepted or if nothing was found, state evidence used as basis for establishing location. If reestablished through lost corner proportionate methods, indicate all monuments, distances and directions used to establish.

Corner by Alexander Anderson in 1863. North between 23 & 24, 40.00 set $\frac{1}{4}$ post. BT's W Pine 20" S79E 121ks, W. Pine 20" S60W 401ks. H.C. Hall recovered original BT's in 1930. He set a concrete monument with no BT's near. I found Hall's concrete monument. Made new BT's as shown below.

(c) (d) (e) Plan view of corner with ties to at least 4 witness monuments. If in disagreement with previously established corner, show the distances between the two corners and also indicate the ties to the disputed corner.



(i) I, WILLIAM E. BANDOW R.L.S. 1182
 (type or print name) certify that the corner location on this record was determined by me or under my direction and control and that this U.S. Public Land Survey Monument Record is correct and complete to the best of my knowledge and belief.

William E. Bandow 2-28-86
 Signature Date

GENISOT & ASSOCIATES INC.
 1512 EAGLE ST., RHINE, WI.



Index No. P-21

3807232000