

U. S. PUBLIC LAND SURVEY MONUMENT RECORD

INSTRUCTIONS: This record shall show the location of the corner and shall include all of the following nine elements (a through i).

(a) Identify the corner by reference to the U.S. public land survey system.

● = Corner monument restored.

Southwest corner of Section 19, T 38 N R 8 E, Oneida County Wisconsin

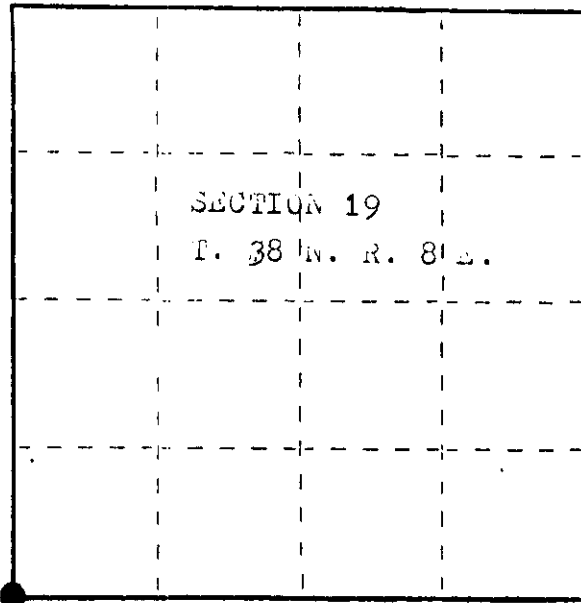
Original corner was set in 1860's at 80.00 chains the bearing trees:

N. pine	12	S	30	E	11
Y. pine	10	S	27	E	10
do	12	N	67	E	43
do	12	N	50	E	17

no original evidence was found

Compared with all record data and accepted as correct.

Robert H. Womack 18.11.84
Oneida County Surveyor date



(b) Describe any record evidence, monument evidence, occupational evidence, testimonial evidence or any other material evidence you considered, and whether the monument was found or placed.

June 25, 1919 J.H. Vaughn ran from the northwest corner of Section 19, south 81.17 chains to the the southwest corner, corrected line north for town road.

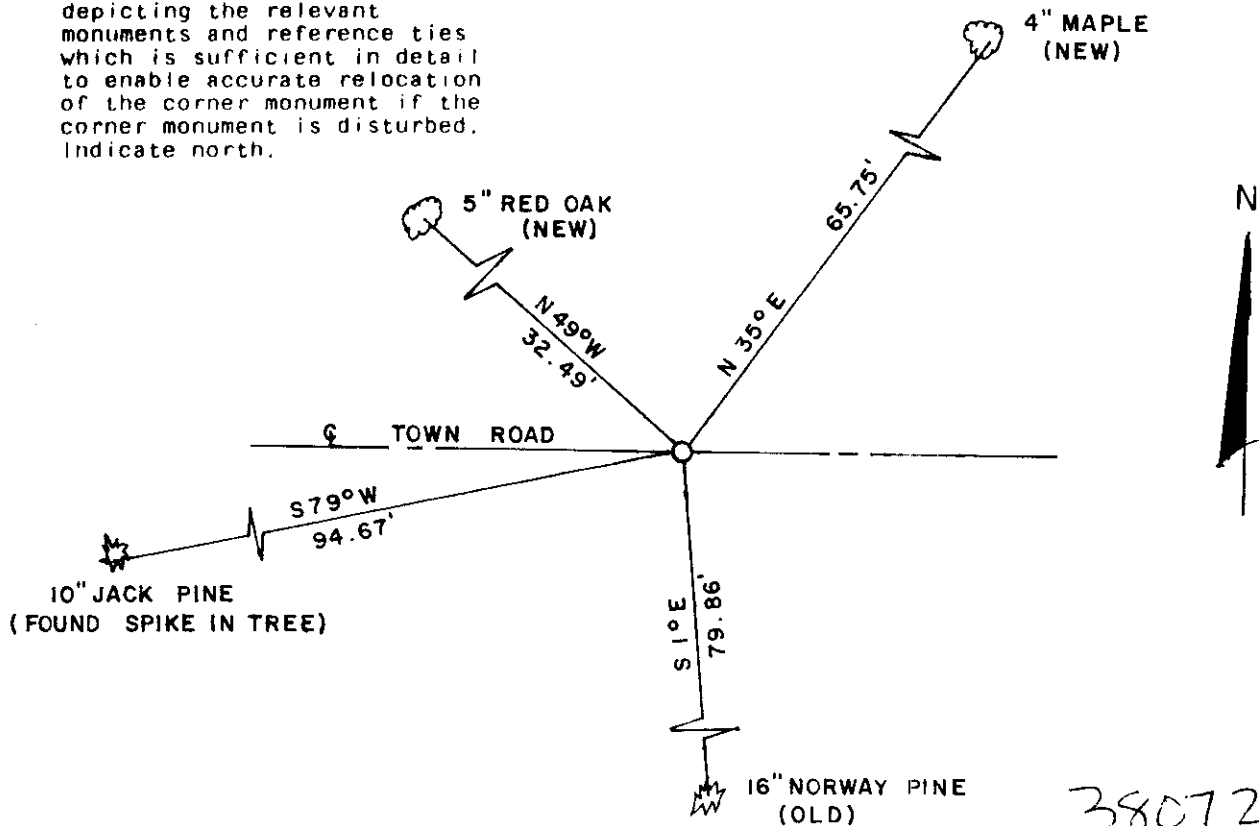
Sept. 1, 1924, L.P. Pelishek Eng. Co. shows iron stake at the intersection of highways, at corner position.

Oct. 29, 1962, F.R. Wincentsen shows iron pipe at corner location

August 24, 1983, I found a 1" iron pipe at what would be the intersection of the Town Roads, corner was recovered 3" below surface, it fits survey measurements to the east good. Pipe in good condition, did not remonument.

(c) In the plan view drawing below, provide reference ties to at least 4 witness monuments, or, if the location is within a municipality, to at least 2 witness monuments. (Witness monuments shall be made of concrete, natural stone, iron or other equally durable material.) Describe witness monuments.

(d) Show a plan view drawing depicting the relevant monuments and reference ties which is sufficient in detail to enable accurate relocation of the corner monument if the corner monument is disturbed. Indicate north.



3807 240000

R-1

(e) Describe any material discrepancy between the location of the corner as restored or reestablished and the location of that corner as previously restored or reestablished by distance and direction. Show the discrepancy on the plan view drawing under (d), above. Show the distances between the corner as previously restored or reestablished and (1) the corner as restored or reestablished, and (2) to at least 2 of the witness monuments shown on the drawing in (d), above.

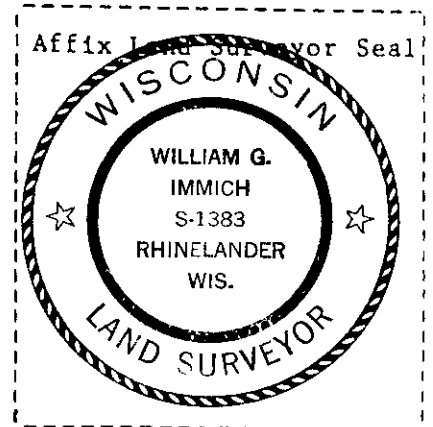
none

(f) Was the corner restored through acceptance of (1) an obliterated evidence location, or, (2) a found perpetuated location?

A found perpetuated corner

(g&h) Was the corner reestablished through lost corner proportionate methods? If so, show the method, including the directions and distances to other public land survey corners used as evidence or used for proportioning in determining the corner location?

REGISTERS OFFICE)
Oncida County, Wis.)
Received for Record the 18th day of
January A.D. 1984 at
10:00 o'clock A.M. and recorded in
Vol. _____ on page _____
Loris Verage Kuehn
Register



(1) I, William Immich
(type or print name) certify that the corner location shown on this record was determined by me or under my direction and control and that this U.S. Public Land Survey Monument Record is correct and complete to the best of my knowledge and belief.

William Immich
Signature

December 13, 1983
Date

RI