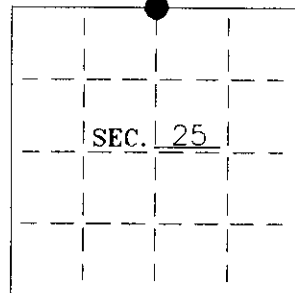


# U. S. PUBLIC LAND SURVEY MONUMENT RECORD

Note: This form is intended and designed to fulfill all requirements of Wisconsin Administrative Code-Chapter A-E 7.08 U. S. Public Land Survey Monument Record (3)(a)(b)(c)(d)(e)(f)(g)(h)(i). An additional sheet may be added if necessary to conform with said requirements.

(a) CORNER LOCATION: State Plane Coordinates  
N 1/4 corner of Sec. 25 X -----  
 Township 38 North Y -----  
 Range 7 East Datum Base -----  
 Town Newbold County of Oneida



(b) HISTORY OF ORIGINAL CORNER ESTABLISHMENT:

Original Surveyor: Alexander Anderson  
 Date of Survey: Commenced August, 1863  
 Completed August, 1863

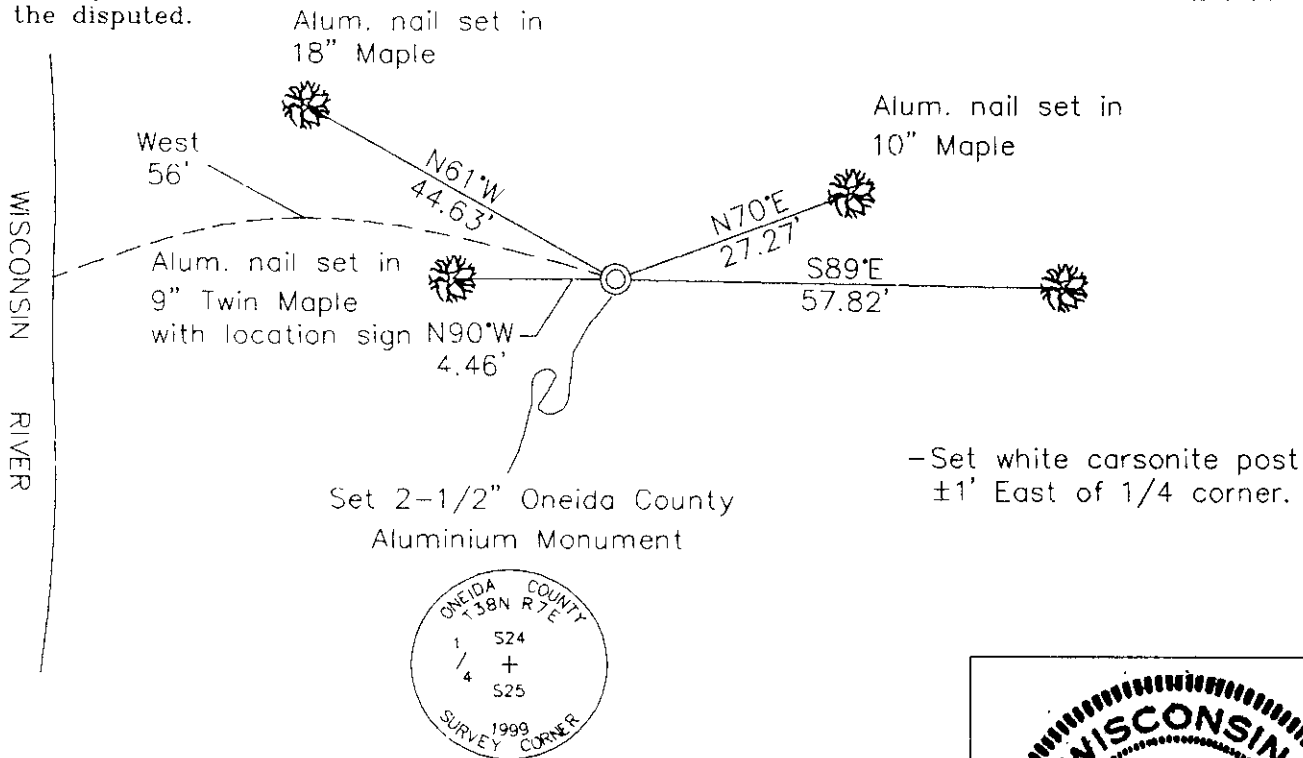
Original B.T.'S

Maple 10 N86°W 12 lks  
 Birch 10 N44-1/2°E, 25 lks

(b)(f)(g)(h) Description of monument found at this corner and if it was accepted—state all evidence (material—testimonial—occupation—plats—records—other monuments) used as a basis for accepting. If not accepted or if nothing was found state evidence used as basis for establishing location. If reestablished through lost corner proportionate methods indicate all monuments—distances and directions used to establish. Indicate type of monument and sign post found or set.

- 1863— Alexander Anderson set 1/4 section post.
- 1916— D.H. Vaughan found old post he set in 1895 and made new BT:  
Elm 16" S4-1/2°E, 64-1/2 lks.
- 1969— Northwoods set a nail on barbed wire fence—line from Vaughan's Elm BT.
- 1999— I found Vaughan's Elm BT badly rotted and Northwoods' nail. I replaced Northwoods' nail with an Oneida County Aluminium Monument. Made four new BT's  
(See Sketch Below).

(c)(d)(e) Plan view of corner with ties to at least 4 witness monuments. If in disagreement with previously established corner—show the distances between the two corners and also indicate the ties to the disputed.



(i) I Charles E. Winkler S-1431  
 hereby certify that the corner location on this record was determined by me or under my direction and control and that this U.S. Public Land Survey Monument Record is correct and complete to the best of my knowledge and belief.

Charles E. Winkler 12/14/2000  
 Signature Foltz and Associates, Inc. Date



INDEX NO. R 23

3807240020