

U.S. PUBLIC LAND SURVEY MONUMENT RECORD

Note: This form is intended and designed to fulfill all requirements of Wisconsin Administrative Code, Chapter A-E 7.08 U.S. Public Land Survey Monument Record (3) (a) (b) (c) (d) (e) (f) (g) (h) (i). An additional sheet may be added if necessary to conform with said requirements.

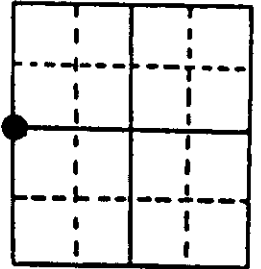
(a) Corner location: Township 38 North Corner: West 1/4 Corner

Section 19 Range 8 East Original Surveyor: Alfred Millard

Town/City/Village Newbold

Original B.T.'s: 20" Pw S40°W 13 lks
10" Pw S70°E 12 lks

County Oneida

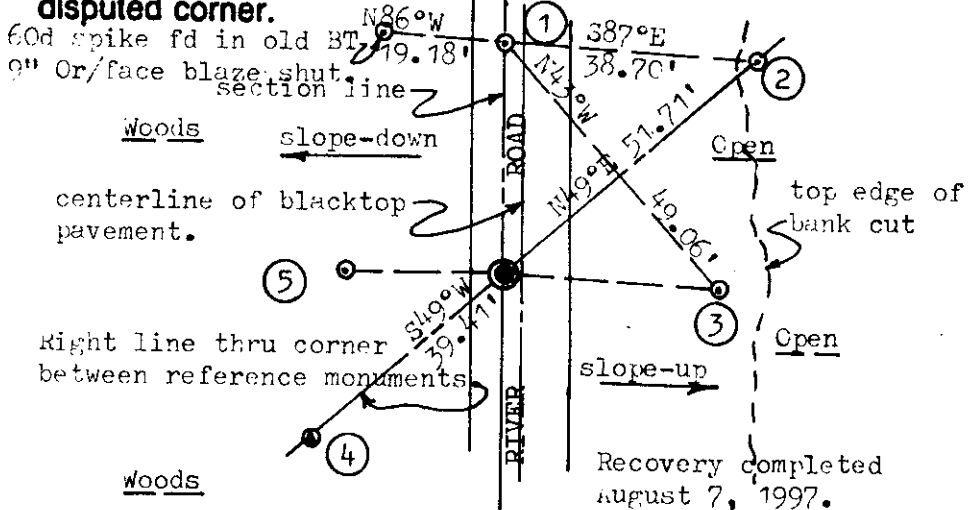


Original Survey Date: September 1860 ● Location

(b) (f) (g) (h) Description of monument found at this corner and if it was accepted, state all evidence (material, testimonial, occupational, plats, records, other monuments) used as a basis for accepting. If not accepted or if nothing was found, state evidence used as basis for establishing location. If reestablished through lost corner proportionate methods, indicate all monuments, distances and directions used to establish. Indicate type of monument found or set and sign post.

Found and accepted a 1/4" dia. iron shaft with top flush to existing blacktop road pavement at this corner location. All original GLO survey corner evidence now obliterated. In 1919, Vaughn ran west line of Section 19 between section corners at 81.17 ch for Newbold town road; no 1/4 corner notes or BTs. In 1922, Vaughn surveyed Shady Rest Plat in Govt. Lot 7 of Section 19 north and east of his 1/4 corner location in North/South roadway. In 1932, Hall used Vaughns 1/4 corner location retraced from iron pipes found on South line of Shady Rest Plat, to run the quarter line easterly to the East 1/4 corner of Section 19. In the spring of 1983, the iron shaft was set at the corner by Wilderness Surveying of Minocqua, Wis. from a retracement survey of the south line of Vaughns Shady Rest Plat and Halls 1932 quarter line survey. In the fall of 1983, Genisot & Associates of Rhinelander, Wis. did not accept the iron shaft at 1/4 corner by Wilderness Surveying (Vaughn & Hall), but accepted a RR spike found in blacktop road pavement 36' North which they replaced with the 3/4" iron pipe found this date, and which is noted to be midway on a right line between existing section corners, and with no further notes of record to substantiate such location; therefore, I did not accept the latter location by Genisot & Associates. I also found a standard white poly 'T' corner marker post 12" SE of Reference Monument No. 4. Plat of survey by Wilderness notes iron shaft as being 18" long.

(c) (d) (e) Plan view of corner with ties to at least 4 witness monuments. If in disagreement with previously established corner, show the distances between the two corners and also indicate the ties to the disputed corner.

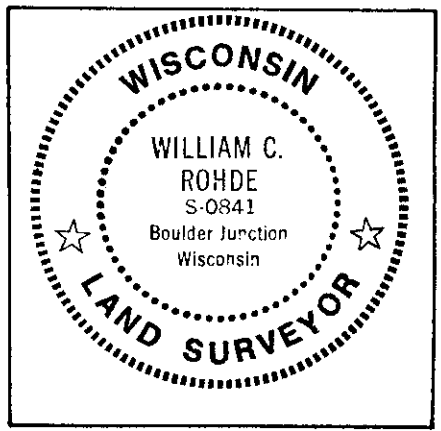


Witness Monument Ties:

- ① 3/4" dia. iron pipe found flush in blacktop pavement North 36.03'.
- ② Found 1/2" dia. iron rod with stamped Oneida Co. aluminum cap flush with grade; set by RLS 1234/Rein in 1992.
- ④ 3/4" dia. iron pipe found with RLS 1234/Wild Surv cap in top S86°E 33.40'.
- ⑤ New BT 9" Or N88°W 25.14'; East trunk of double.

Unless otherwise indicated, all BT witness monument ties are to a 1/4" dia. by 2.5" long PK nail with 1.25" dia. steel washer set in unblazed right face bark; and a PK nail with 2" dia. steel washer stamped BT also set in unblazed front face bark of each BT at DBH. All previous corner recovery notes from Wisconsin DNR and/or Oneida County survey records.

Scale: 1" = 30'



(i) I, William C. Rohde, RLS 841
(type or print name) certify that the corner location on this record was determined by me or under my direction and control and that this U.S. Public Land Survey Monument Record is correct and complete to the best of my knowledge and belief.

William C. Rohde Signature
August 24, 1997 Date

380724200

Index No. P-1