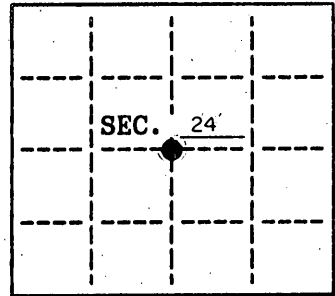


U.S. PUBLIC LAND SURVEY MONUMENT RECORD

Note: This form is intended and designed to fulfill all requirements of Wisconsin Administrative Code, Chapter A-E 7.08 U.S. Public Land Survey Monument Record (3)(a)(b)(c)(d)(e)(f)(g)(h)(i). An additional sheet may be added if necessary to conform with said requirements.

(a) CORNER LOCATION:

C 1/4 corner of Sec. 24
 Township 38 North
 Range 7 East
 Town/City LAKE TOMAHAWK
~~State Plane~~ **Coordinates**
 ONEIDA COUNTY
 X 226159.020
 Y 212436.609
 Datum Base _____
 County of ONEIDA

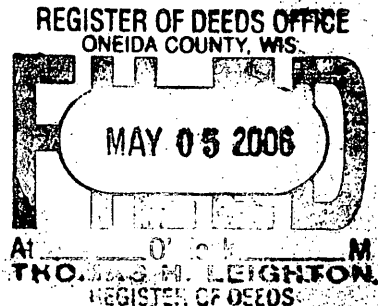
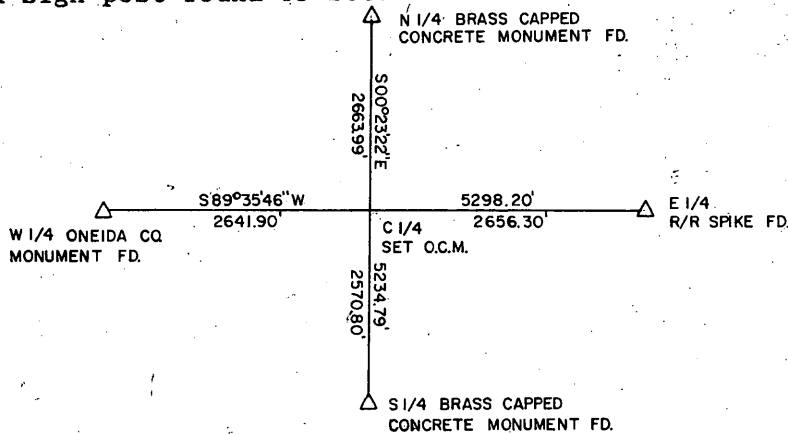


(b) HISTORY OF ORIGINAL CORNER ESTABLISHMENT

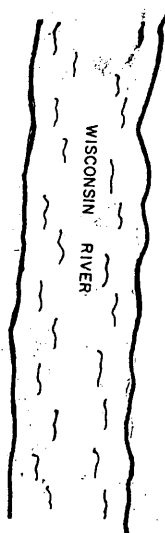
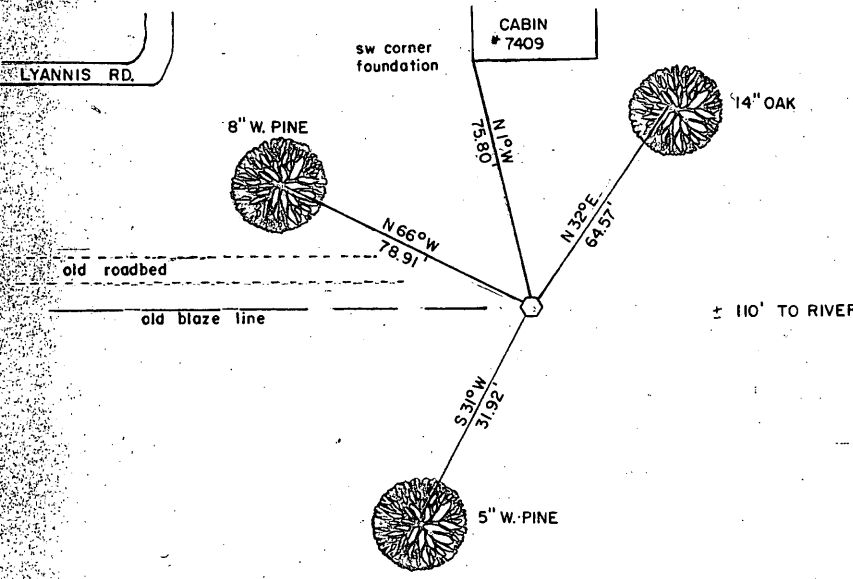
Original B.T.'S

Original Surveyor: ALEXANDER ANDERSON
 Date of Survey: Commenced 1863
 Completed 1863

(b)(f)(g)(h) Description of monument found at this corner and if it was accepted, state all evidence (material, testimonial, occupational, plats, records, other monuments) used as a basis for accepting. If not accepted or if nothing was found, state evidence used as basis for establishing location. If reestablished through lost corner proportionate methods, indicate all monuments, distances and directions used to establish. Indicate type of monument and sign post found or set.



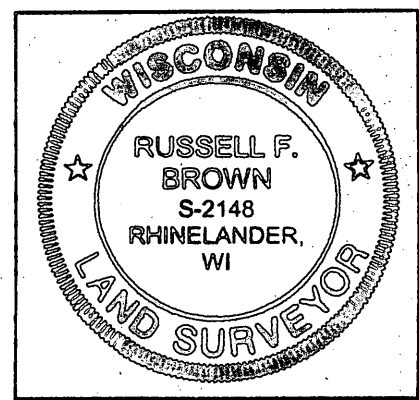
(c)(d)(e) Plan view of corner with ties to at least 4 witness monuments. If in disagreement with previously established corner, show the distances between the two corners and also indicate the ties to the disputed.



DISTANCES ARE TO NAIL IN SIDE OF TREE.
 WHITE POST 1' SOUTH.
 NO EVIDENCE OF OTHER CORNERS IN AREA.
 NO SCALE
 GPS DIRECT FROM BASE UNIT ON HARN 213 S, TRIMBLE 5700-5800 RTK

(i) I, Russell F. Brown
 hereby certify that the corner location on this record was determined by me or under my direction and control and that this U.S. Public Land Survey Monument Record is correct and complete to the best of my knowledge and belief.

Russell F. Brown 2/27/04
 Signature Date



INDEX NO. P23

3807202020