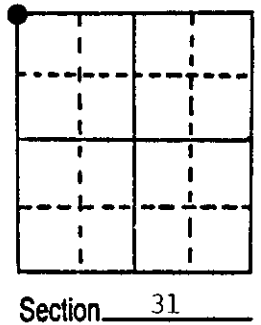
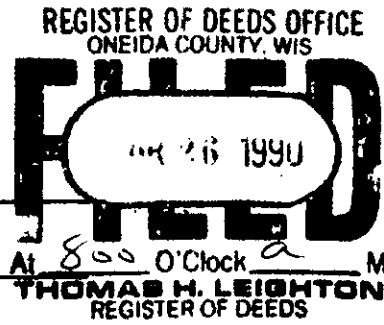


# U.S. PUBLIC LAND SURVEY MONUMENT RECORD

Note: This form is intended and designed to fulfill all requirements of Wisconsin Administrative Code, Chapter A-E 5.02, U.S. Public Land Survey Monument Record (3) (a) (b) (c) (d) (e) (f) (g) (h) (i). An additional sheet may be added if necessary to conform with said requirements.

(a) Corner location: Township 38 North  
 Range 8 East/West  
 Town/City/Village Newbold  
 County Oneida



(b) (f) (g) (h) Description of monument found at this corner and if it was accepted, state all evidence (material, testimonial, occupational, plats, records, other monuments) used as a basis for accepting. If not accepted or if nothing was found, state evidence used as basis for establishing location. If reestablished through lost corner proportionate methods, indicate all monuments, distances and directions used to establish.

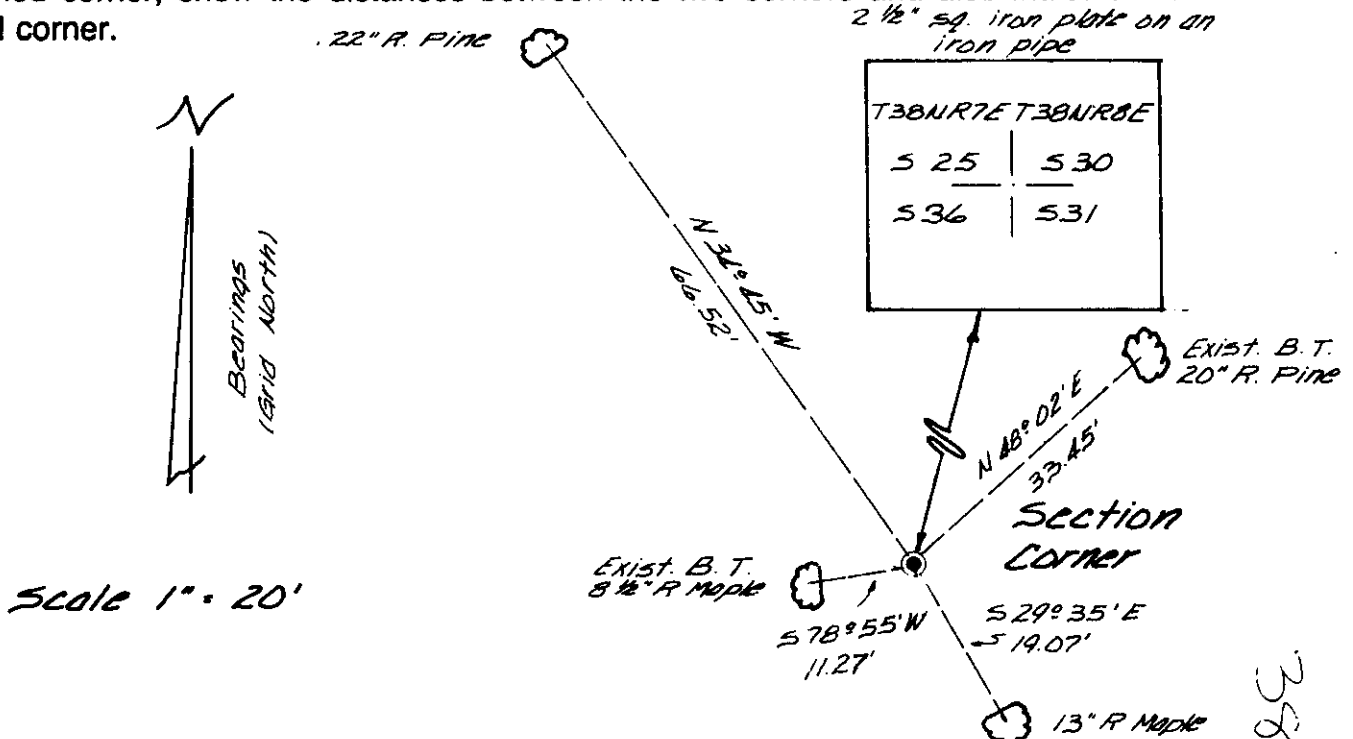
Sept 1860 - Alfred Millard, Deputy Surveyor, set post corner to Sections 30, 31, 25, and 36. Bearing trees: 18" W. Pine, S89°E, 62 links; 24" W. Pine, N7°E, 76 links; 28" W. Pine, N17°W, 67 links.

October 1962 - F. R. Wincentzen, County Surveyor, identifies corner as being marked by a RIPCO monument.

March 29th, 1989 - James D. Rein, R.L.S. #1234, recovered 2" outside dia. iron pipe with a welded 2½" square plate marked as shown in plan. Existing bearing trees: 8½" Red Maple, S78°55'W, 11.27 feet; 20" Red Pine, N48°02'E, 33.45 feet. Made new bearing trees as shown in plan and set plastic post 1½ feet northwest of corner.

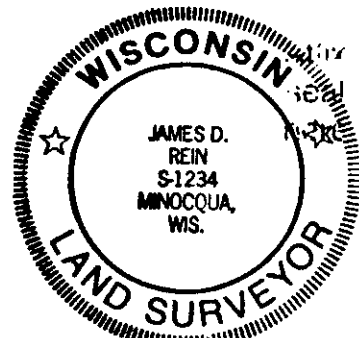
Note: Old fence lines run east and south from corner position.

(c) (d) (e) Plan view of corner with ties to at least 4 witness monuments. If in disagreement with previously established corner, show the distances between the two corners and also indicate the ties to the disputed corner.



(i) I, James D. Rein R.L.S. #1234  
 (type or print name) certify that the corner location on this record was determined by me or under my direction and control and that this U.S. Public Land Survey Monument Record is correct and complete to the best of my knowledge and belief.

James D. Rein Signature April 8th, 1989 Date



Index No. V-1  
380725000