

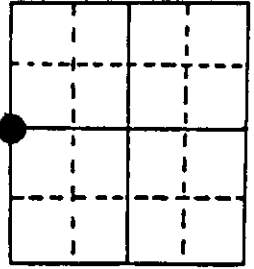
# U.S. PUBLIC LAND SURVEY MONUMENT RECORD

Note: This form is intended and designed to fulfill all requirements of Wisconsin Administrative Code, Chapter A-E 7.08 U.S. Public Land Survey Monument Record (3) (a) (b) (c) (d) (e) (f) (g) (h) (i). An additional sheet may be added if necessary to conform with said requirements.

(a) Corner location: Township 38 North  
 Range 8 East/West

Town/City/Village Newbold

County Oneida

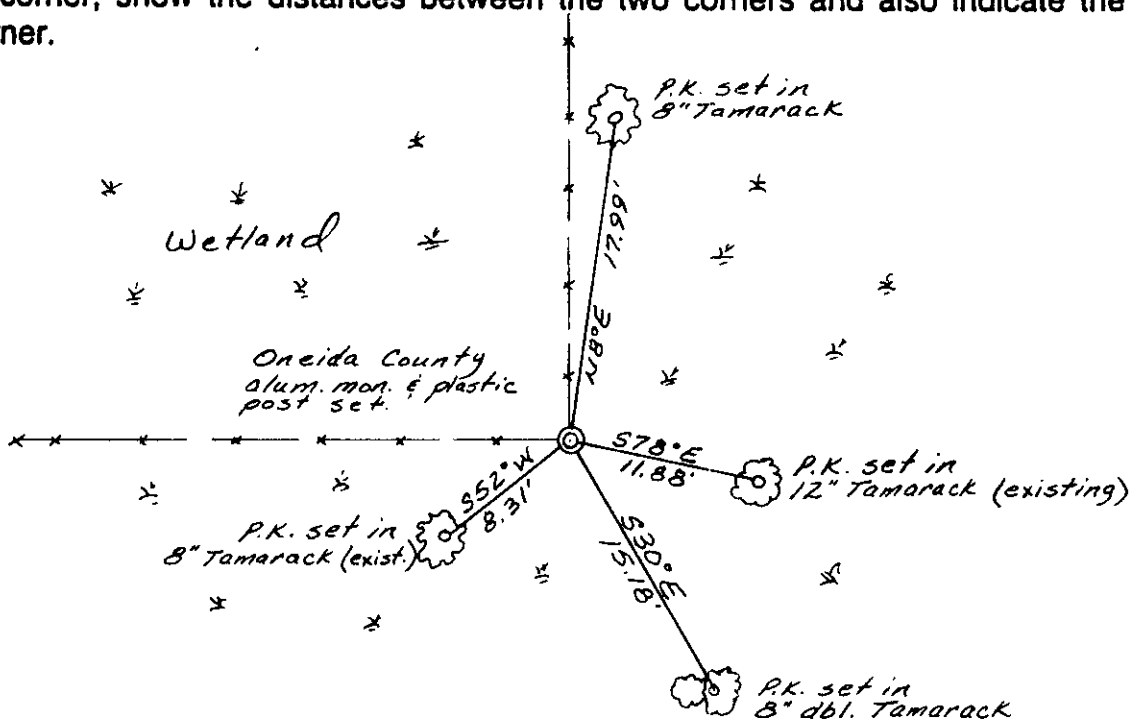


Section 30

(b) (f) (g) (h) Description of monument found at this corner and if it was accepted, state all evidence (material, testimonial, occupational, plats, records, other monuments) used as a basis for accepting. If not accepted or if nothing was found, state evidence used as basis for establishing location. If reestablished through lost corner proportionate methods, indicate all monuments, distances and directions used to establish. Indicate type of monument found or set and sign post.

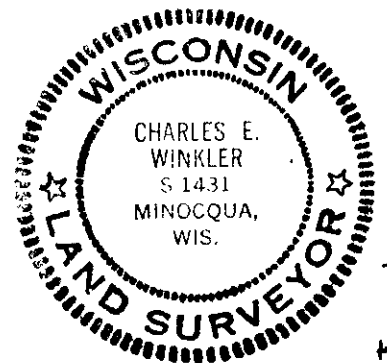
- 1860 - Alfred Millard, Deputy Surveyor, set a post for the corner. BT's: 10" Tamarack, S33°W, 14 lks; 10" Tamarack, S57°E, 23 lks.
- 1962 - Genisot Dwg. #3041, dated October 29, 1962, shows a monument at the corner location and a distance north to the northwest section corner of 2644.62.
- 1994 - I found and accepted a 1-1/2" iron pipe adjacent to a 1" iron pipe at a fence intersection (N&W). This iron pipe is 2648.24' south of the northwest section corner. I replaced the 1-1/2" iron pipe with an Oneida County Aluminum Monument.

(c) (d) (e) Plan view of corner with ties to at least 4 witness monuments. If in disagreement with previously established corner, show the distances between the two corners and also indicate the ties to the disputed corner.



(i) I, Charles E. Winkler S-1431  
 (type or print name) certify that the corner location on this record was determined by me or under my direction and control and that this U.S. Public Land Survey Monument Record is correct and complete to the best of my knowledge and belief.

Charles E. Winkler 12/30/1994  
 Signature Foltz & Associates, Inc. Date



Stamp  
 3807252000

Index No. 1-1-30