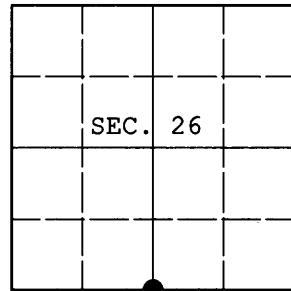


U.S. PUBLIC LAND SURVEY MONUMENT RECORD

Note: This form is intended and designed to fulfill all requirements of Wisconsin Administrative Code, Chapter A-E 7.08 U.S. Public Land Survey Monument Record (3) (a) (b) (c) (d) (e) (f) (g) (h) (i). An additional sheet may be added if necessary to conform with said requirements.

(a) CORNER LOCATION: Plane Coordinates
 1/4 Cor. of Secs. 26 & 35 N:
 Township 38 North E:
 Range 7 East of the 4th P.M. Datum:
 Town of Lake Tomahawk County of Oneida



(b) HISTORY OF ORIGINAL CORNER ESTABLISHMENT

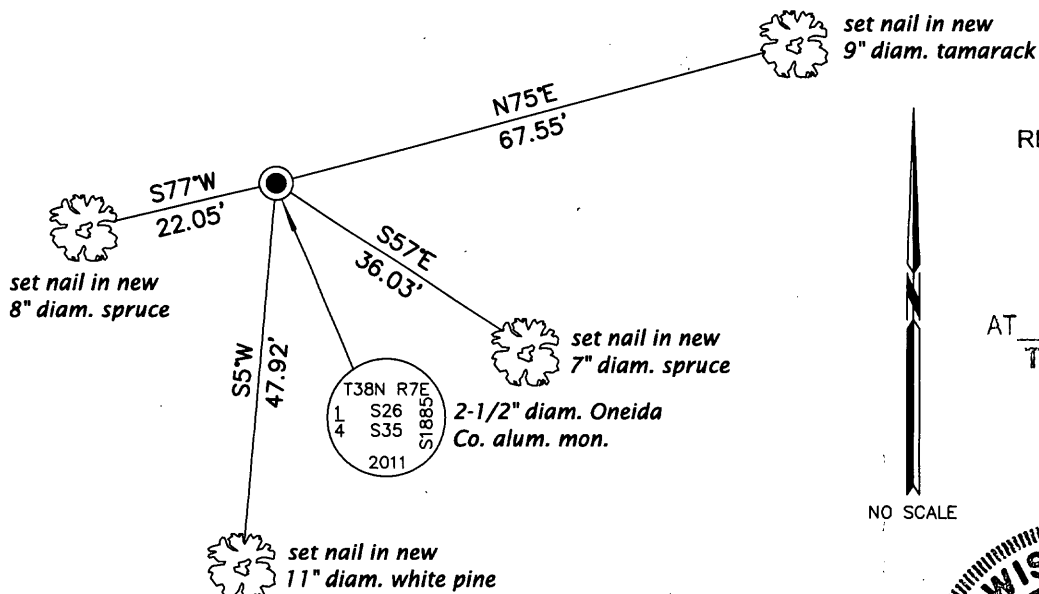
Original Surveyor: Alexander Anderson Original Accessories:
 Date of Survey: Commenced: Aug. 15, 1863 spruce 7" N18°W, 21 lks.
 Completed: Aug. 27, 1863 spruce 6" S1°W, 8 lks.

(b) (f) (g) (h) Description of monument found at this corner and if it was accepted, state all evidence (material, testimonial, occupational, plats, records, other monuments) used as a basis for accepting. If not accepted or if nothing was found, state evidence used as basis for establishing location. If re-established through lost corner proportionate methods, indicate all monuments, distances and directions used to establish. Indicate type of monument and sign post found or set.

December, 1941: On OCS #L-2205, V.M. Maine indicates he set a cedar stake with the following accessories: Y.P. 7" S70°W, 43-1/2 lks.; Y.P. 12" S6°E, 59-1/2 lks.

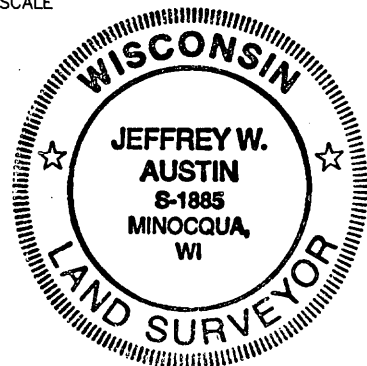
November 8, 2011: I found and accepted Maine's monument, a 3" sq. cedar post still standing after 70 years. The post is marked "1/4 S" "S 26" "S 35" "M". I replaced the post with a 2-1/2" diam., 30" long aluminum pipe with 3-1/4" diam. Oneida Co. aluminum cap projecting 4" above the ground surface. I found Maine's red pine stump bearing S6°E, 39.5 ft. and his scribed red pine snag 7" S20°W, 29.0 ft. Maine's field notes reveal that he misread the bearing on this tree when preparing the map; the notes indicate the bearing to actually be S20°W. I established accessories as shown below and set a white plastic sign post, bearing North, 1 ft. dist.


(c) (d) (e) Plan view of corner with ties to at least 4 witness monuments. If in disagreement with previously established corner, show the distances between the two corners and also indicate the ties to the disputed.



REGISTER OF DEEDS OFFICE
 ONEIDA COUNTY
FILED
 JAN 16 2012
 AT _____ O'CLOCK _____ M
THOMAS H. LEIGHTON
 REGISTER OF DEEDS

(i) I, Jeffrey W. Austin, Registered Land Surveyor No. S-1885, hereby certify that the corner location on this record was determined by me or under my direction and control and that this U.S. Public Land Survey Monument Record is correct and complete to the best of my knowledge and belief.




 Signature

DEC 31, 2011
 Date