

U.S. PUBLIC LAND SURVEY MONUMENT RECORD

Note: This form is intended and designed to fulfill all requirements of Wisconsin Administrative Code, Chapter A-E 7.08 U.S. Public Land Survey Monument Record (3) (a) (b) (c) (d) (e) (f) (g) (h) (i). An additional sheet may be added if necessary to conform with said requirements.

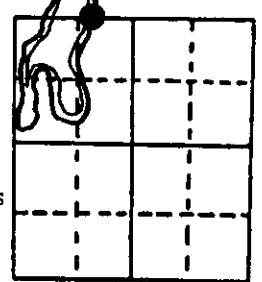
(a) Corner location: Township 38 North Corner: McNaughton Lake
Wit EMC - North Line

Section 35 Range 7 East Original Surveyor: A. Anderson/GLO

Town/City/Village Lake Tomahawk

Original B.T.'s: 18" Py N74°E 18 lks
18" Py S49°E 8 lks

County Oneida

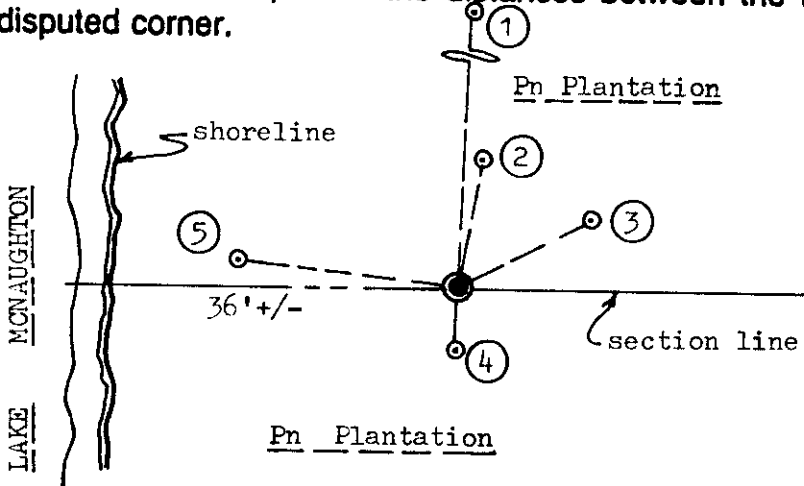


Original Survey Date: August 1863 ● Location

(b) (f) (g) (h) Description of monument found at this corner and if it was accepted, state all evidence (material, testimonial, occupational, plats, records, other monuments) used as a basis for accepting. If not accepted or if nothing was found, state evidence used as basis for establishing location. If reestablished through lost corner proportionate methods, indicate all monuments, distances and directions used to establish. Indicate type of monument found or set and sign post.

Found and accepted a standard 1.5" dia. iron pipe monument with stamped WCD brass cap 14" above grade and undisturbed at this corner location. This monument was apparently set by a previous WCD survey, although no notes could be found in Wisconsin DNR or Oneida County records. No original BT evidence is evidenced, nor original MC post which would now fall in lake. The monument was found in a red pine plantation about 196 feet south of existing blacktop boat ramp landing and parking area on East shore of McNaughton Lake. In 1988, Marv Seymour/DNR found this WCD capped monument also and noted four(4) new BTs which I found and used for new ties below. I set a standard white fiberglass 'T' corner marker post 1 foot south of corner monument. Older WCD and Oneida County survey notes indicate that the North 1/4 and NW section corner of Section 35 had been located and also an 1890 survey by Dorr who ran north line of Section 35 from the North 1/4 corner 70.00 chains to East bank of McNaughton Lake, 6.17 chains over lake and 1.12 chains to NW section corner; thus, upon the basis of my previous experience with older WCD survey notes and procedures, I am sure that this monument was set on the section line as a witness MC between the latter record quarter and section corners; general location is also verified by photo/map inspection. Recovery completed November 4, 1996; no witnesses.

(c) (d) (e) Plan view of corner with ties to at least 4 witness monuments. If in disagreement with previously established corner, show the distances between the two corners and also indicate the ties to the disputed corner.

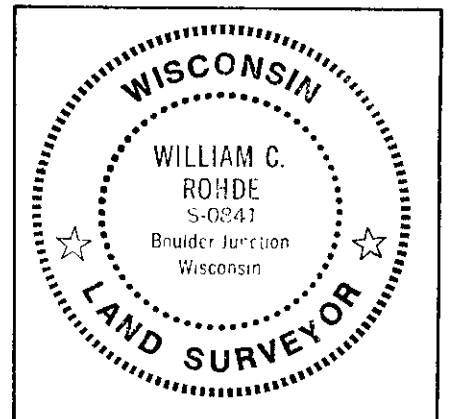


Witness Monument Ties:

- ① 24" Pn Record BT N03°E 74.28'.
- ② 7" Pn New BT N09°E 13.68'.
- ③ 9" Pn Record BT N62°E 15.83'.
- ④ 9" Pn Record BT South 6.40'.
- ⑤ 12" Pj Record BT N83°W 23.16'.

Unless otherwise indicated, all BT witness monument ties are to a 1/4" dia. by 2.5" long PK nail with 1.25" dia. steel washer set in unblazed right face bark; and a PK nail with 2" dia. steel washer stamped BT also set in unblazed front face bark of each BT at DBH. All previous corner recovery notes from Wisconsin DNR and/or Oneida County survey records.

Scale: 1" = 20'



(i) I, William C. Rohde, RLS 841
(type or print name) certify that the corner location on this record was determined by me or under my direction and control and that this U.S. Public Land Survey Monument Record is correct and complete to the best of my knowledge and belief.

William C. Rohde
Signature

March 27, 1997
Date

3807260028

Index No. 18-19