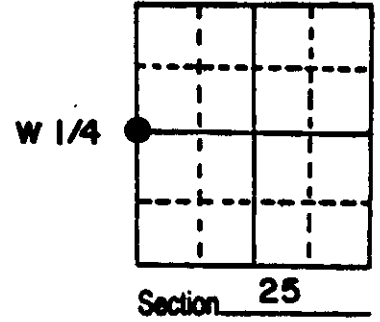


# U.S. PUBLIC LAND SURVEY MONUMENT RECORD

**Note:** This form is intended and designed to fulfill all requirements of Wisconsin Administrative Code, Chapter A-E 5.02, U.S. Public Land Survey Monument Record (3) (a) (b) (c) (d) (e) (f) (g) (h) (i). An additional sheet may be added if necessary to conform with said requirements.

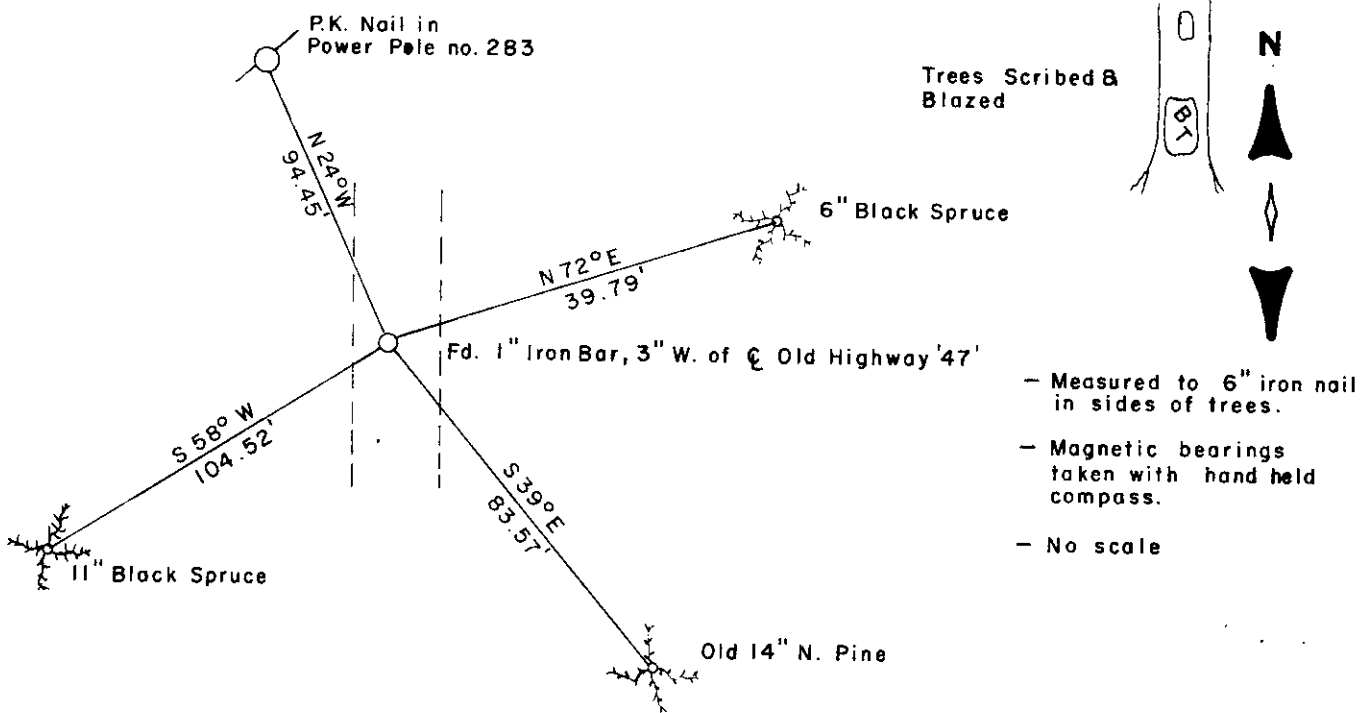
(a) Corner location: Township 38 North  
 Range 7 East/West  
 Town ~~City/Village~~ Lake Tomahawk  
 County Oneida



(b) (f) (g) (h) Description of monument found at this corner and if it was accepted, state all evidence (material, testimonial, occupational, plats, records, other monuments) used as a basis for accepting. If not accepted or if nothing was found, state evidence used as basis for establishing location. If reestablished through lost corner proportionate methods, indicate all monuments, distances and directions used to establish.

Corner by Alexander Anderson in 1863. North between 25 & 26, 40.00 set  $\frac{1}{4}$  post. BT's Tam. 9" S22E 16lks, Tam. 10" S21W 17lks. Dorr set corner proportionately in 1890. Vaughan found corner in 1908. Cameron set axel shaft in 1970 by proportionate methods & made BT's. Concrete nail in PP N24W 94.45', N. Pine 14" S39E 82.9'. I found axel shaft & Cameron's BT's & accept his position.

(c) (d) (e) Plan view of corner with ties to at least 4 witness monuments. If in disagreement with previously established corner, show the distances between the two corners and also indicate the ties to the disputed corner.



(i) I, WILLIAM E. BANDOW R.L.S. 1182  
 (type or print name) certify that the corner location on this record was determined by me or under my direction and control and that this U.S. Public Land Survey Monument Record is correct and complete to the best of my knowledge and belief.

William E. Bandow 2-28-86  
 Signature Date

GENISOT & ASSOCIATES INC.  
 1512 EAGLE ST., RHINE, WI.



Index No. 7-21

3807262000