

# U.S. PUBLIC LAND SURVEY MONUMENT RECORD

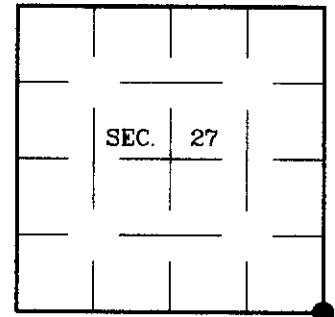
Note: This form is intended and designed to fulfill all requirements of Wisconsin Administrative Code, Chapter A-E 7.08 U.S. Public Land Survey Monument Record (3)(a)(b)(c)(d)(e)(f)(g)(h)(i). An additional sheet may be added if necessary to conform with said requirements.

**(a) CORNER LOCATION:**

Corner common to Secs. 26, 27, 34, 35  
 Township 38 North  
 Range 7 East, 4th Principal Meridian  
 Town of Lake Tomahawk

**Plane Coordinates**

X:  
 Y:  
 Datum:  
 County of Oneida



**(b) HISTORY OF ORIGINAL CORNER ESTABLISHMENT**

Original Surveyor: Alexander Anderson  
 Date of Survey: Commenced: August 15, 1863  
 Completed: August 27, 1863

**Original Accessories:**

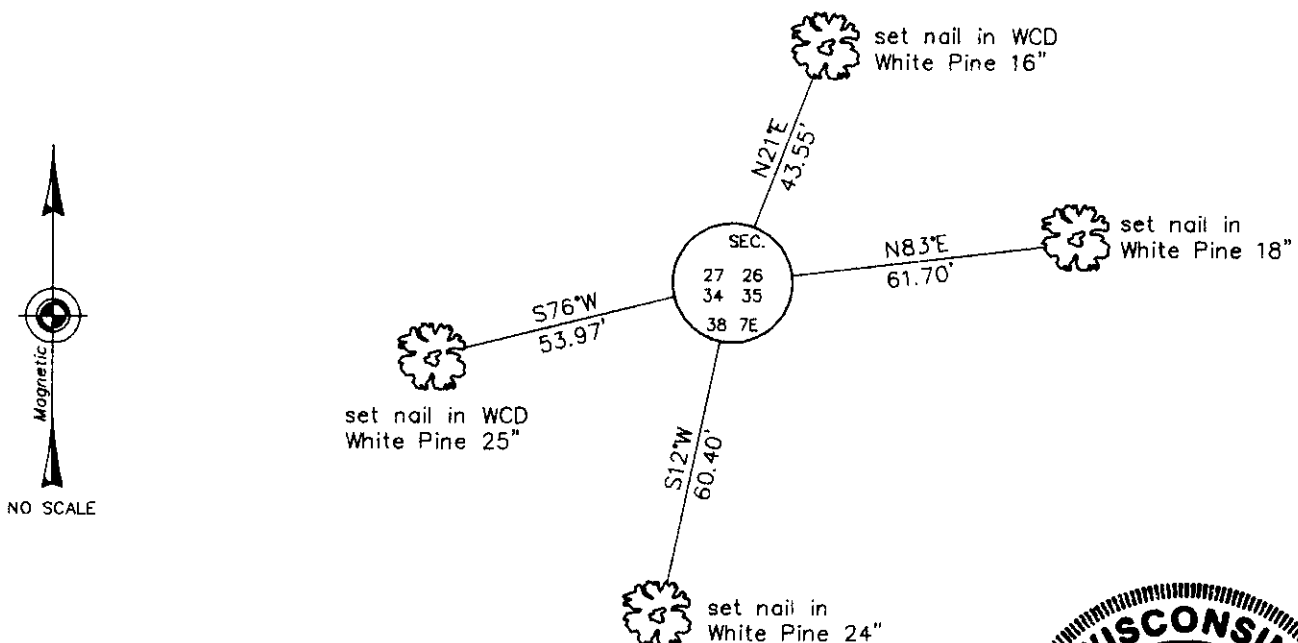
Birch 12 N27°E 20 lks.  
 White Pine 12 S81°W 34 lks.

**(b)(f)(g)(h) Description of monument found at this corner and if it was accepted, state all evidence (material, testimonial, occupational, plats, records, other monuments) used as a basis for accepting. If not accepted or if nothing was found, state evidence used as basis for establishing location. If reestablished through lost corner proportionate methods, indicate all monuments, distances and directions used to establish. Indicate type of monument and sign post found or set.**

DNR corner notes: (OCS #L-826) Found original BW clump. Set WCD brass cap and BT's: PW 11 N18°E, 43.23'; PW 14 S76°W, 54.25'.

June 6, 2001: I found and accepted an iron post, 2 ins. diam., firmly set with a 3 ins. diam. WCD brass cap, 11 ins. above the ground surface, marked as shown below. I found the GLO White Pine stump bearing S81°W, 22-1/2 ft. dist. I found or established accessories as shown below and set a plastic sign post bearing North, 1 ft. dist.

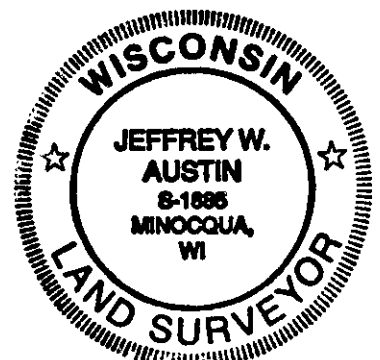
**(c)(d)(e) Plan view of corner with ties to at least 4 witness monuments. If in disagreement with previously established corner, show the distances between the two corners and also indicate the ties to the disputed.**



(i) I, Jeffrey W. Austin, Registered Land Surveyor No. S-1885, hereby certify that the corner location on this record was determined by me or under my direction and control and that this U.S. Public Land Survey Monument Record is correct and complete to the best of my knowledge and belief.

Signature

8-27-01  
Date



INDEX NO. V-17

3007270000