

U.S. PUBLIC LAND SURVEY MONUMENT RECORD

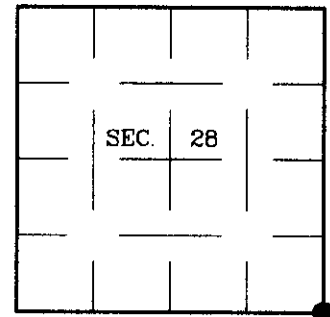
Note: This form is intended and designed to fulfill all requirements of Wisconsin Administrative Code, Chapter A-E 7.08 U.S. Public Land Survey Monument Record (3)(a)(b)(c)(d)(e)(f)(g)(h)(i). An additional sheet may be added if necessary to conform with said requirements.

(a) CORNER LOCATION:

Corner common to Secs. 27, 28, 33, 34
 Township 38 North
 Range 7 East, 4th Principal Meridian
 Town of Lake Tomahawk

Plane Coordinates

X:
 Y:
 Datum:
 County of Oneida



(b) HISTORY OF ORIGINAL CORNER ESTABLISHMENT

Original Surveyor: Alexander Anderson
 Date of Survey: Commenced: August 15, 1863
 Completed: August 27, 1863

Original Accessories:

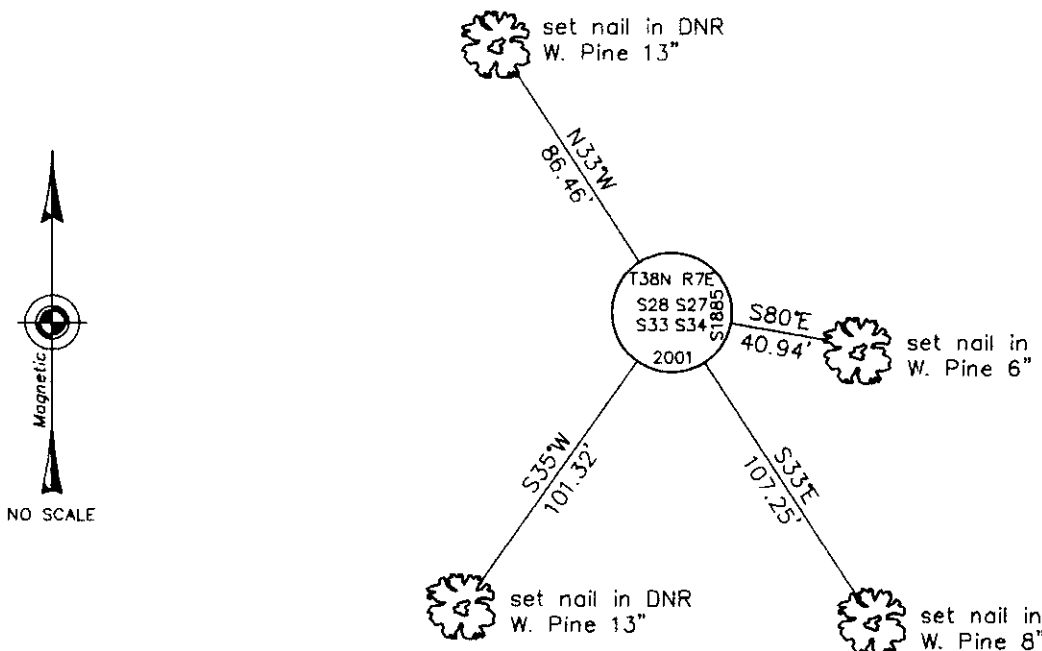
Sugar 7 N16°E 16 lks.
 W. Pine 15 S83°W 28 lks.

(b)(f)(g)(h) Description of monument found at this corner and if it was accepted, state all evidence (material, testimonial, occupational, plats, records, other monuments) used as a basis for accepting. If not accepted or if nothing was found, state evidence used as basis for establishing location. If reestablished through lost corner proportionate methods, indicate all monuments, distances and directions used to establish. Indicate type of monument and sign post found or set.

1965: DNR corner notes OCS #L-825. WCD brass cap on North edge of open keg. PW 5' N39°W, 87.12'; PW 7' S29°W, 119.13'.

June 7, 2001: I found and accepted an iron pipe, 42 ins. long, 1-1/4 ins. diam. from which the GLO W. Pine stump bears S83°W, 18-1/2 ft. dist. The corner is located on the North edge of a small open bog. I replaced the pipe with an aluminum post, 30 ins. long, 2-1/2 ins. diam., with 3-1/4 ins. diam. Oneida Co. aluminum cap 6 ins. above the ground surface and marked as shown below. I believe the DNR distance to their Southwesterly bearing tree is incorrect. In checking the distances to other accessories in OCS #L-825, I find that converting from feet to chains delivers a distance to the nearest link or one-half link. I believe the distances shown were originally converted from distances in chains possibly explaining the error. I found or established accessories as shown below and set a plastic sign post bearing West, 1 ft. dist.

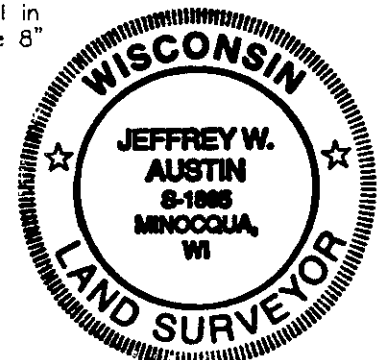
(c)(d)(e) Plan view of corner with ties to at least 4 witness monuments. If in disagreement with previously established corner, show the distances between the two corners and also indicate the ties to the disputed.



(i) I, Jeffrey W. Austin, Registered Land Surveyor No. S-1885, hereby certify that the corner location on this record was determined by me or under my direction and control and that this U.S. Public Land Survey Monument Record is correct and complete to the best of my knowledge and belief.

Signature

8-27-01
 Date



INDEX NO. V-13

3807280000