

CERTIFIED LAND CORNER RESTORATION

State of Wisconsin }  
County of Oneida } ss.

I, Gerald B. Inman, do hereby certify that on the 12th day of June, 1981, we found evidence of the North 1/4 corner of Section 33 Township 38N Range 7E, Fourth Principal Meridian, as described hereon; and that ~~from this evidence we established a new monument and~~ accessories as described hereon to perpetuate the original location of this corner:

Description of original monument and accessories and subsequent restorations:

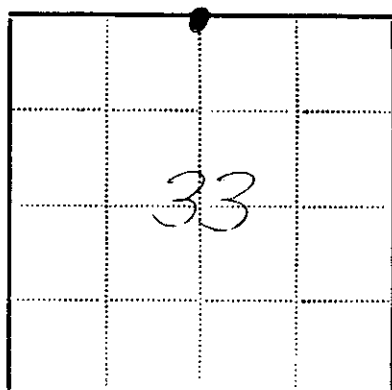
- Wood post
- 14" Aspen, S78°W, 9 links
- 10" Birch, N40°W, 16 links

Description of corner ~~evidence~~ found:

- WCD brass capped iron pipe

Description of ~~monument and~~ accessories <sup>we</sup> established to perpetuate the location of this corner:

- WCD brass capped iron pipe
- 16" Maple N49°E, 9.1 feet
- 6" White Pine S61°E, 21.7 feet



● - Corner monument restored  
 □ -

~~Resident~~ witnesses Robert W. Conner, Jr.

Dated at Minocqua Wisconsin, this 12th day of June 1981.

Signature *Gerald B. Inman* Title R.L.S.  
(County Surveyor, Registered Land Surveyor, or other duly authorized official)

Surveyors Registration No. S-891

Office of *Reg of Deeds* County of *Oneida*  
I hereby certify that the within instrument was filed in this office for record on the 11 day of *June* 1981, and was filed in Book No. \_\_\_\_\_ Page No. \_\_\_\_\_ of County Records.

Signature *Doris Verage Kuhn* Title *Reg. of Deeds*  
*Supervisor of Deeds*

Township \_\_\_\_\_, Range \_\_\_\_\_, Section \_\_\_\_\_, Index No. \_\_\_\_\_, Page No. \_\_\_\_\_

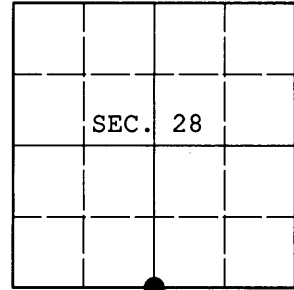
3807280020

11-1

**U.S. PUBLIC LAND SURVEY MONUMENT RECORD**

Note: This form is intended and designed to fulfill all requirements of Wisconsin Administrative Code, Chapter A-E 7.08 U.S. Public Land Survey Monument Record (3) (a) (b) (c) (d) (e) (f) (g) (h) (i). An additional sheet may be added if necessary to conform with said requirements.

(a) CORNER LOCATION: Plane Coordinates  
 1/4 Cor. of Secs. 28 & 33 N:  
 Township 38 North E:  
 Range 7 East of the 4th P.M. Datum:  
 Town of Lake Tomahawk County of Oneida



(b) HISTORY OF ORIGINAL CORNER ESTABLISHMENT

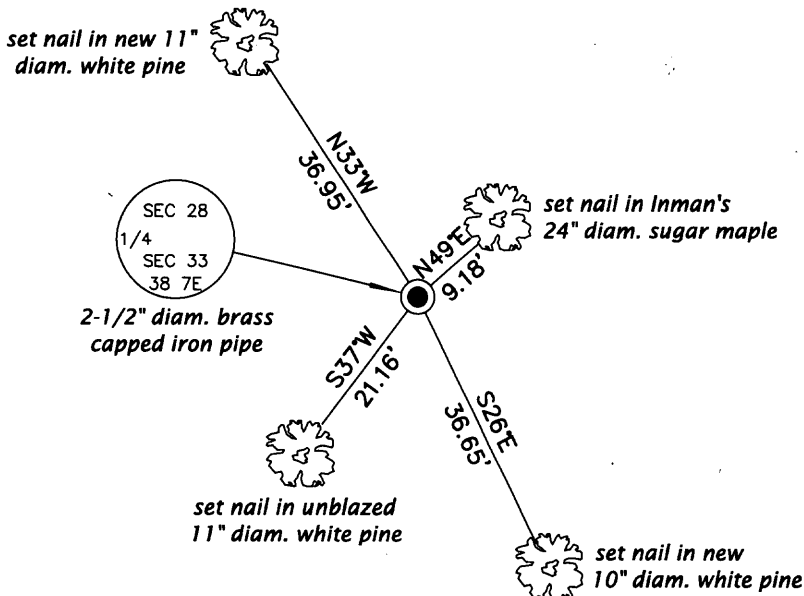
Original Surveyor: Alexander Anderson Original Accessories:  
 Date of Survey: Commenced: Aug. 15, 1863 aspen 14" S78°W, 9 lks.  
 Completed: Aug. 27, 1863 birch 10" N40°W, 16 lks.

(b) (f) (g) (h) Description of monument found at this corner and if it was accepted, state all evidence (material, testimonial, occupational, plats, records, other monuments) used as a basis for accepting. If not accepted or if nothing was found, state evidence used as basis for establishing location. If re-established through lost corner proportionate methods, indicate all monuments, distances and directions used to establish. Indicate type of monument and sign post found or set.

NOTE: This is a perpetuation of a previous USPLS Monument Record by Gerald B. Inman, RLS dated June 12, 1981 and filed in the office of the Oneida County Register of Deeds. A complete history of the corner can be found on the previous monument record. I accept the previous location as a true and faithful perpetuation or reestablishment of the original corner location and further perpetuate it as follows.

November 5, 2011: I found and accepted Inman's monument, a 2-1/2" diam. iron pipe with 3" diam. WCD brass cap projecting 24" above the ground surface. Only one of Inman's bearing trees remain. I found or established accessories as shown below and set a white plastic sign post bearing Northwest, 1 ft. dist.

(c) (d) (e) Plan view of corner with ties to at least 4 witness monuments. If in disagreement with previously established corner, show the distances between the two corners and also indicate the ties to the disputed.



REGISTER OF DEEDS OFFICE  
 ONEIDA COUNTY  
**FILED**  
 JAN 16 2012

AT \_\_\_\_\_ O'CLOCK \_\_\_\_\_ M  
 THOMAS H. LEIGHTON  
 REGISTER OF DEEDS



(i) I, Jeffrey W. Austin, Registered Land Surveyor No. S-1885, hereby certify that the corner location on this record was determined by me or under my direction and control and that this U.S. Public Land Survey Monument Record is correct and complete to the best of my knowledge and belief.

  
 Signature

DEC. 31 2011  
 Date



3807280020 (INDEX NO. V-11)