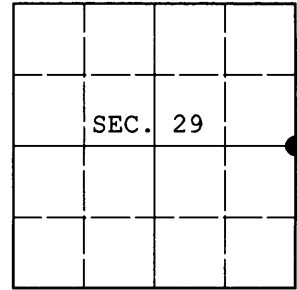


U.S. PUBLIC LAND SURVEY MONUMENT RECORD

Note: This form is intended and designed to fulfill all requirements of Wisconsin Administrative Code, Chapter A-E 7.08 U.S. Public Land Survey Monument Record (3) (a) (b) (c) (d) (e) (f) (g) (h) (i). An additional sheet may be added if necessary to conform with said requirements.

(a) CORNER LOCATION: Plane Coordinates
 1/4 Cor. of Secs. 28 & 29 N:
 Township 38 North E:
 Range 7 East of the 4th P.M. Datum:
 Town of Lake Tomahawk County of Oneida



(b) HISTORY OF ORIGINAL CORNER ESTABLISHMENT

Original Surveyor: Alexander Anderson Original Accessories:
 Date of Survey: Commenced: Aug. 15, 1863 maple 8" West, 7 lks.
 Completed: Aug. 27, 1863 birch 10" N52°E, 18 lks.

(b) (f) (g) (h) Description of monument found at this corner and if it was accepted, state all evidence (material, testimonial, occupational, plats, records, other monuments) used as a basis for accepting. If not accepted or if nothing was found, state evidence used as basis for establishing location. If re-established through lost corner proportionate methods, indicate all monuments, distances and directions used to establish. Indicate type of monument and sign post found or set.

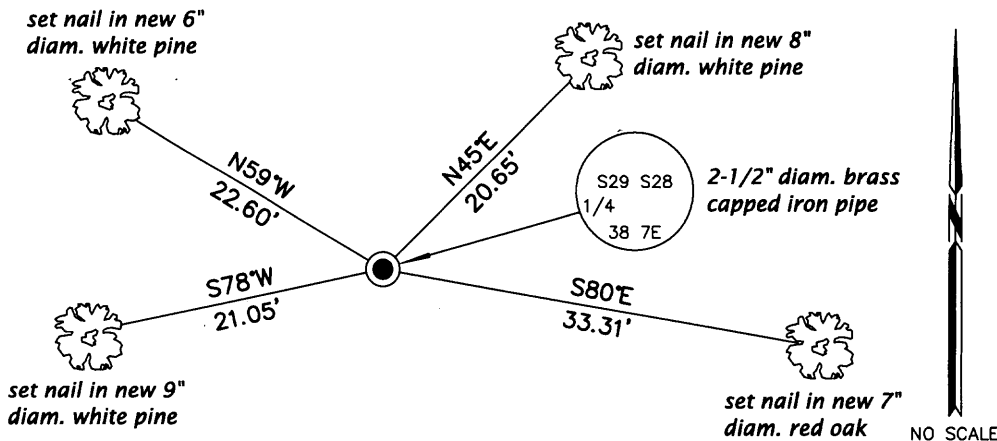
1961: On OCS #L-819, DNR indicates corner is marked by a brass cap with the following accessories: orig. PW 5" S43°W, 46; new PW 16" S79°E, 74; new BT cut about 1965.

November 3, 2011: I found and accepted the DNR monument, a 2-1/2" diam. iron pipe with 3" diam. WCD brass cap projecting 24" above the ground surface with a 1-1/4" diam. iron rod adjacent. I found a pine stump bearing S78°E, 48.5 ft. I established accessories as shown below and set a white plastic sign post bearing East, 1 ft. dist.

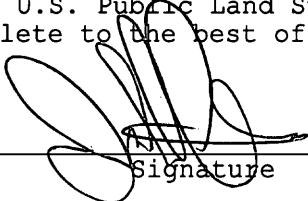
REGISTER OF DEEDS OFFICE
 ONEIDA COUNTY
FILED
 JAN 16 2012

AT _____ O'CLOCK _____ M
THOMAS H. LEIGHTON
 REGISTER OF DEEDS

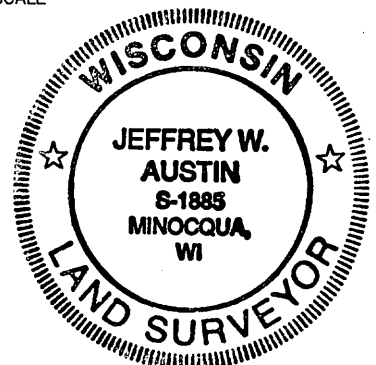
(c) (d) (e) Plan view of corner with ties to at least 4 witness monuments. If in disagreement with previously established corner, show the distances between the two corners and also indicate the ties to the disputed.



(i) I, Jeffrey W. Austin, Registered Land Surveyor No. S-1885, hereby certify that the corner location on this record was determined by me or under my direction and control and that this U.S. Public Land Survey Monument Record is correct and complete to the best of my knowledge and belief.


 Signature

DEC. 31, 2011
 Date



3807292000 (INDEX NO. T-9)