

# U.S. PUBLIC LAND SURVEY MONUMENT RECORD

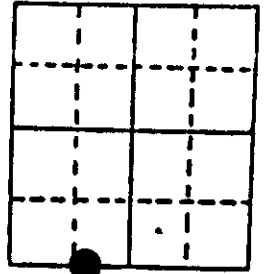
**Note:** This form is intended and designed to fulfill all requirements of Wisconsin Administrative Code, Chapter A-E 7.08 U.S. Public Land Survey Monument Record (3) (a) (b) (c) (d) (e) (f) (g) (h) (i). An additional sheet may be added if necessary to conform with said requirements.

(a) Corner location: Township 38 North

Range 7 East/West

Town/City/Village LAKE TOMAHAWK

County ONEIDA



MC Section 30

(b) (f) (g) (h) Description of monument found at this corner and if it was accepted, state all evidence (material, testimonial, occupational, plats, records, other monuments) used as a basis for accepting. If not accepted or if nothing was found, state evidence used as basis for establishing location. If reestablished through lost corner proportionate methods, indicate all monuments, distances and directions used to establish. Indicate type of monument found or set and sign post.

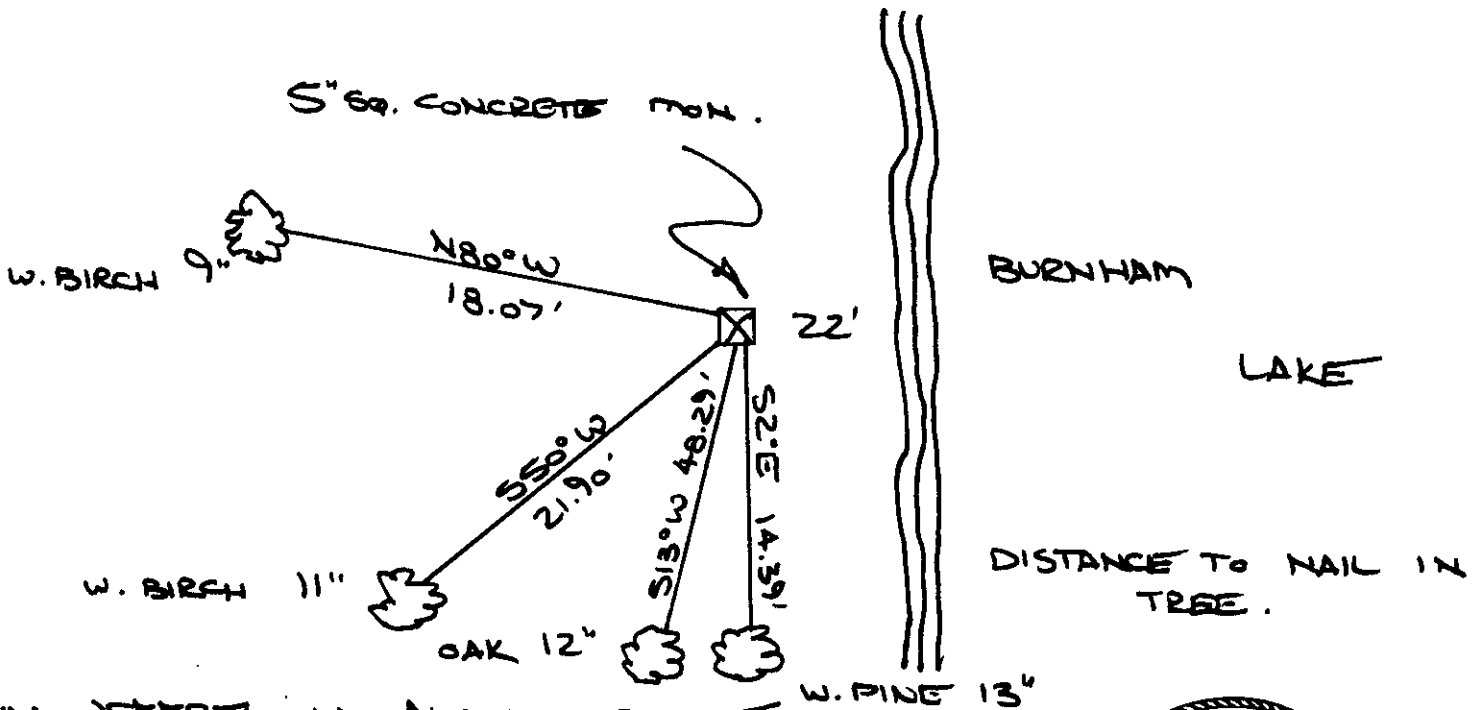
August, 1863: Alexander Anderson set a wood post: Birch 12" S60W, 9 lks., Birch 12" N9W, 19 lks.

January, 1959: Lloyd Scott shows this corner on his map as a Concrete Monument: Birch 7" N81W, 18.5', Oak 10" S38W, 27.4'.

November 19, 1976: James Rein shows this corner on map C-146 as a 5"x5" Concrete Monument and scribed wood post found in place: W. Birch 9" N76W, 18.0'.

August 1, 1989: Jeffrey W. Austin found and accepted a 5" square concrete Monument: set nail in W. Birch 9" N80W, 18.07' (old BT), set nail in W. Birch 11" S50W, 21.90', set nail in Oak 12" S13W, 48.29', set nail in W. Pine 13" S2E, 14.39'.

(c) (d) (e) Plan view of corner with ties to at least 4 witness monuments. If in disagreement with previously established corner, show the distances between the two corners and also indicate the ties to the disputed corner.



(i) I, JEFFREY W. AUSTIN S-1885  
 (type or print name) certify that the corner location on this record was determined by me or under my direction and control and that this U.S. Public Land Survey Monument Record is correct and complete to the best of my knowledge and belief.

Signature

AUGUST 7, 1989

Date



Index No. 12-3

3807 300029

# U.S. PUBLIC LAND SURVEY MONUMENT RECORD

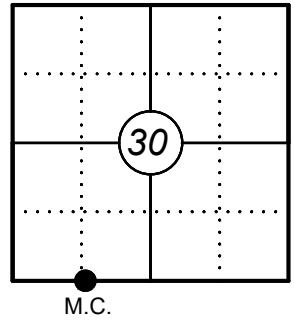
This form is intended and designed to fulfill all requirements of Wisconsin Administrative Code, Chapter A-E 7.08 U.S. Public Land Survey Monument Record (3) (a)(b)(c)(d)(e)(f)(g)(h)(i). An additional sheet may be added if necessary to confirm with said requirements.

Oneida County  
Land Information Office  
Filed  
8/11/2025

**(a) Corner Location:**

Meander Corner, South Line of Section 30  
Township 38 North  
Range 7 East  
Town of Lake Tomahawk  
County of Oneida

Corner ID: 3807300029



**(b) History of Original Corner:**

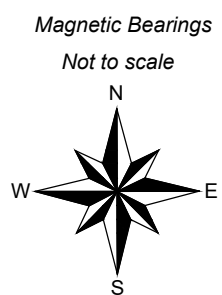
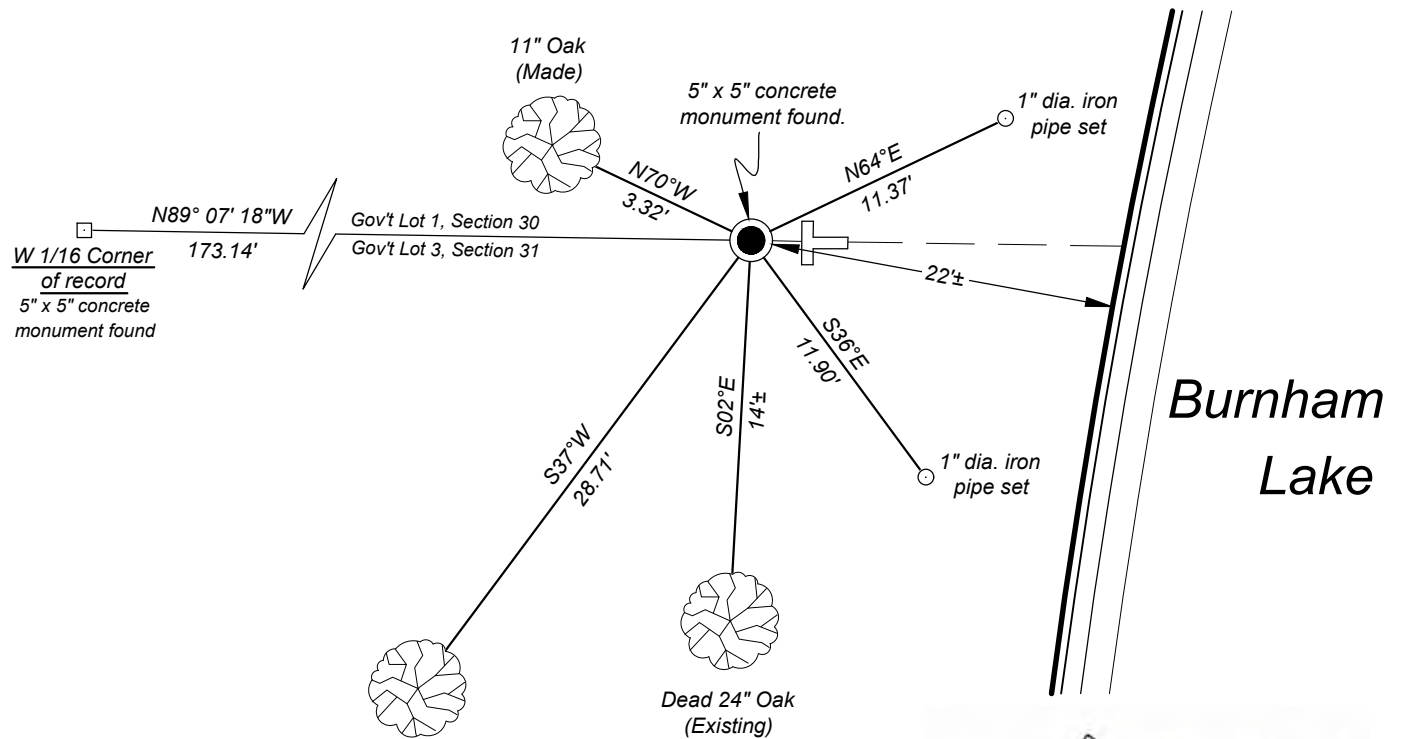
Original Surveyor: Alexander Anderson Original B.T.'s: 12" Birch - S 60° W, 9 Links  
12" Birch - N 9° W, 19 Links  
Date of Survey: August, 1863

**(f)(g)(h) Description of monument found at this corner and if it was accepted, state all evidence (material, testimonial, occupational, plats, records, other monuments) used as a basis for establishing location. If reestablishing through lost corner proportionate methods, indicate all monuments, distances, and directions used to establish. Indicate type of monument and sign post found or set.**

For corner history, see previous U.S. Public Land Survey Monument Record by Jeffery Austin, dated August 7, 1989.

07/23/2025 - I found and accepted a 5" x 5" concrete monument at the corner location near the westerly shoreline of Burnham Lake, as well as an existing Oak bearing tree, which is now dead. I made two additional bearing trees and set two iron pipes to witness the corner as shown below.

**(c)(d)(e) Plan view of corner with ties to at least four witnesses. If in disagreement with previously established corner, show the distances between the two corners and also indicate the tie to the disputed corner.**



- \* Vinyl "T" post 0.3' east of corner.
- \* Distances to bearing trees are to nail in side.

**Certification**  
I, Gregory S. Maines, Professional Land Surveyor No. 2729, hereby certify that the corner location on this record was referenced by me or under my direction and control and that this U.S. Public Land Survey Monument Record is complete to the best of my knowledge and belief.  
REF: 2025163

Index No.: