

U.S. PUBLIC LAND SURVEY MONUMENT RECORD

Note: This form is intended and designed to fulfill all requirements of Wisconsin Administrative Code, Chapter A-E 7.08 U.S. Public Land Survey Monument Record (3) (a) (b) (c) (d) (e) (f) (g) (h) (i). An additional sheet may be added if necessary to conform with said requirements.

(a) Corner location: Township 38 North Corner: East Wit MC-Birch Lake
South line of Section 31

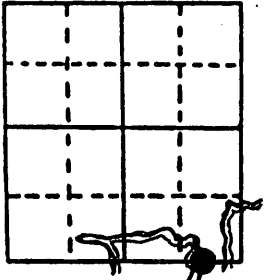
Section 31 Range 7 East Original Surveyor: Alfred Millard

Town/City/Village Lake Tomahawk

Original B.T.'s: 12" Bw S61°E 15 lks
 8" Bw N40°E 08 lks

County Oneida

Original Survey Date: 1860

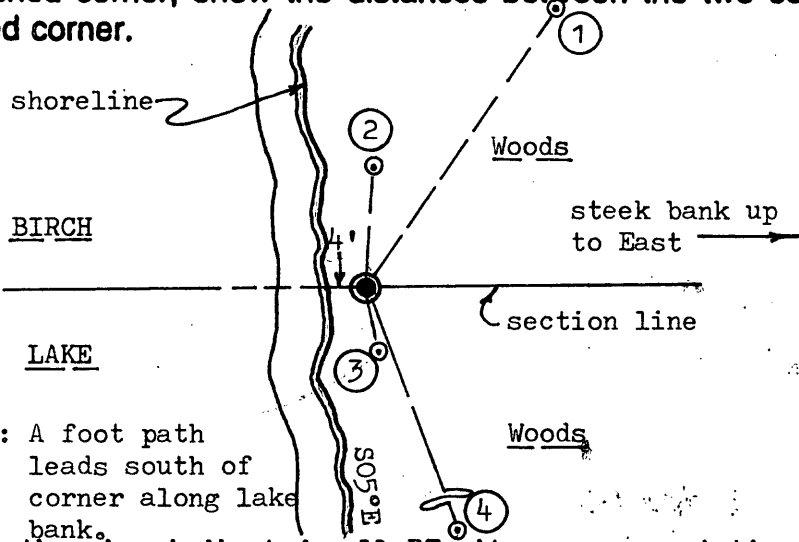


● Location

(b) (f) (g) (h) Description of monument found at this corner and if it was accepted, state all evidence (material, testimonial, occupational, plats, records, other GLO monuments) used as a basis for accepting. If not accepted or if nothing was found, state evidence used as basis for establishing location. If reestablished through lost corner proportionate methods, indicate all monuments, distances and directions used to establish. Indicate type of monument found or set and sign post.

Found and accepted a standard 2" dia. iron pipe monument with stamped WCD brass cap 21" above grade and 4 feet East of existing Birch Lake shoreline. Monument tipped slightly to West so replumbed to fit ties of record and for new ties below. I also added more rocks to cairn at base of the monument to secure it on lake shore bank, and set a standard white poly 'T' corner marker post 12" South of the monument. All GLO original survey corner evidence is now gone or uncertain due to deterioration. In 1961, Berndt/WCD set the WCD capped iron pipe monument as a witness MC during his resurvey of Section 31; his 13" Pn BT N43°E 52 lks is now a 16" Pn N50°E with bottom stump fissure shut but plain, and his 10" Pn BT N21°E 48 1/2 lks could not be found, including stump remains with any certainty. In 1976, Rein of Wilderness Surveying, found WCD capped iron pipe at corner and Berndts NE Pn BT as 19" at record bearing and distance; Rein's new BT 11" Pn N81°E 28.6' found as 12" Pn N84°E with upper and lower face blazes open and plain. Corner monument recovery was assisted by Ms Linda Kuczek, local owner at #5499 Seed Lake Road; last residence on hill at end of road. Recovery completed on July 29, 1997.

(c) (d) (e) Plan view of corner with ties to at least 4 witness monuments. If in disagreement with previously established corner, show the distances between the two corners and also indicate the ties to the disputed corner.



Witness Monument Ties:

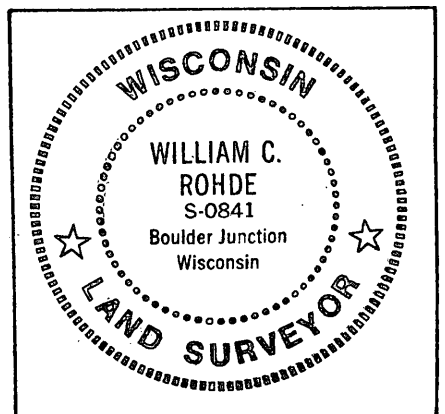
- ① New BT 9" Pn N34°E 36.35'.
- ② New BT 8" Bw N04°E 12.80'.
- ③ New BT 7" Bw S09°E 6.80'.
- ④ New BT 18" Pn S19°E 43.90'.

Note: A foot path leads south of corner along lake bank.

Unless otherwise indicated, all BT witness monument ties are to a 1/4" dia. by 2.5" long PK nail with 1.25" dia. steel washer set in unblazed right face bark; and a PK nail with 2" dia. steel washer stamped BT also set in unblazed front face bark of each BT at DBH. All previous corner recovery notes from Wisconsin DNR and/or Oneida County survey records.



Scale: 1" = 20'



(i) I, William C. Rohde, RLS 841
 (type or print name) certify that the corner location on this record was determined by me or under my direction and control and that this U.S. Public Land Survey Monument Record is correct and complete to the best of my knowledge and belief.

William C. Rohde
 Signature

July 29, 1997
 Date

Index No. 245 EAST SIDE

REGISTER OF DEEDS OFFICE
ONEIDA COUNTY, WIS.

FILED
AUG 5 1997

At _____ O'Clock _____ M
THOMAS H. LEIGHTON
REGISTER OF DEEDS
