

# U.S. PUBLIC LAND SURVEY MONUMENT RECORD

**Note:** This form is intended and designed to fulfill all requirements of Wisconsin Administrative Code, Chapter A-E 7.08 U.S. Public Land Survey Monument Record (3) (a) (b) (c) (d) (e) (f) (g) (h) (i). An additional sheet may be added if necessary to conform with said requirements.

(a) Corner location: Township 38 North

Range 7 East/West

Town/City/Village Lake Tomahawk

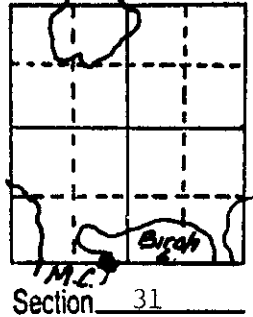
County Oneida

REGISTER OF DEEDS OFFICE  
ONEIDA COUNTY, WIS.

FILED

MAY 26 1990

At 8:00 O'Clock *a* M  
**THOMAS H. LEIGHTON**  
REGISTER OF DEEDS



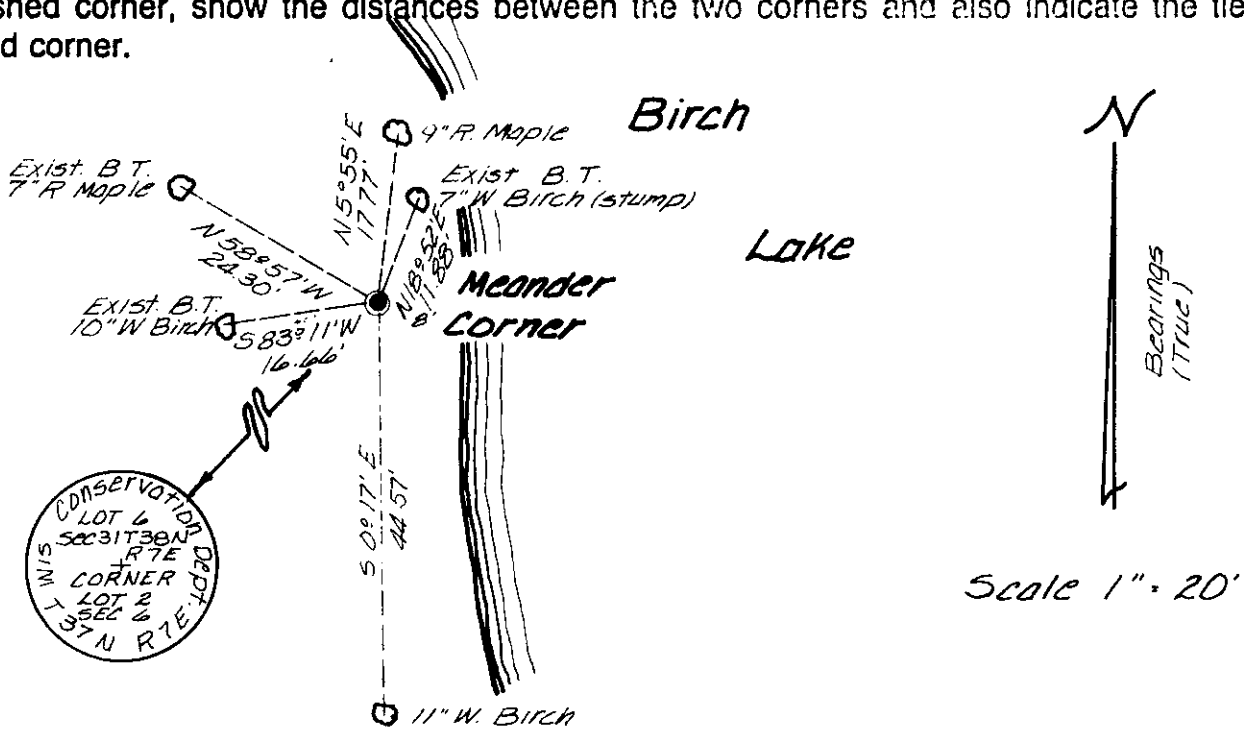
(b) (f) (g) (h) Description of monument found at this corner and if it was accepted, state all evidence (material, testimonial, occupational, plats, records, other monuments) used as a basis for accepting. If not accepted or if nothing was found, state evidence used as basis for establishing location. If reestablished through lost corner proportionate methods, indicate all monuments, distances and directions used to establish.

Sept 8, 1860 - Alfred Millard, Deputy Surveyor, set meander post. Bearing trees: 14" Aspen, S22°W, 12 links; 14" Yellow Pine, N45°W, 48 links.

August 9th, 1961 - Harold E. Berndt, WCD Surveyor, set brass cap from Hassler's B.T. at M.C. on town line west of Birch Lake. New B.T.'s: 4" Soft Maple, N57°W, 36½ links; 6" White Birch, N13°E, 17½ links.

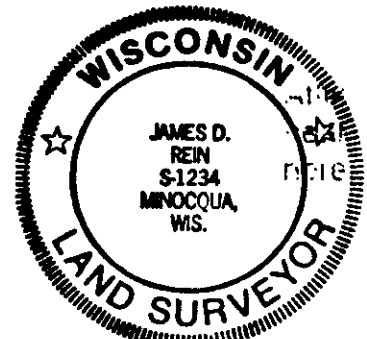
June 1st, 1989 - James D. Rein, R.L.S. #1234, recovered wcd brass capped 2" dia. iron pipe. Existing B.T.'s: 7" White Birch stp., N18°52'E, 11.88 feet; 7" Red Maple, N58°57'W, 24.30 feet; 10" White Birch, S83°11'W, 16.66 feet. Made new B.T.'s as shown in plan view and set plastic post 1 foot north of corner.

(c) (d) (e) Plan view of corner with ties to at least 4 witness monuments. If in disagreement with previously established corner, show the distances between the two corners and also indicate the ties to the disputed corner.



(i) I, James D. Rein, Registered Land Surveyor No. S-1234  
(type or print name) certify that the corner location on this record was determined by me or under my direction and control and that this U.S. Public Land Survey Monument Record is correct and complete to the best of my knowledge and belief.

James D. Rein Signature June 2nd, 1989  
Date



Index No. Z-2-3

3807310022

# U.S. PUBLIC LAND SURVEY MONUMENT RECORD

REGISTER OF DEEDS OFFICE  
ONEIDA COUNTY  
FILED

JAN 13 2021

KYLE J. FRANSON  
REGISTER OF DEEDS

Note: This form is intended and designed to fulfill all requirements of the Wisconsin Administrative Code, Chapter A-E 7.08 U.S. Public Land Monument Record (3)(a)(b)(c)(d)(e)(f)(g)(h)(i). An additional sheet may be added if necessary to conform with said requirements.

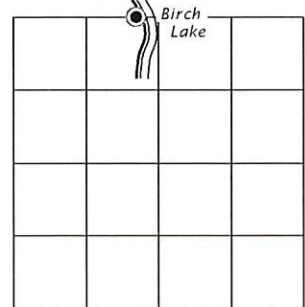
(a) CORNER LOCATION:

Meander Corner of Section 6  
Township 37 North  
Range 7 East  
Town of Cassian  
County of Oneida

North:  
East:  
Datum:  
GNSS Method:  
GNSS Control:

(RECORDING AREA)

SECTION 6



(b) HISTORY OF ORIGINAL CORNER ESTABLISHMENT

Original Surveyor:  
Date of Survey: Commenced  
Completed  
Original B.T.'S

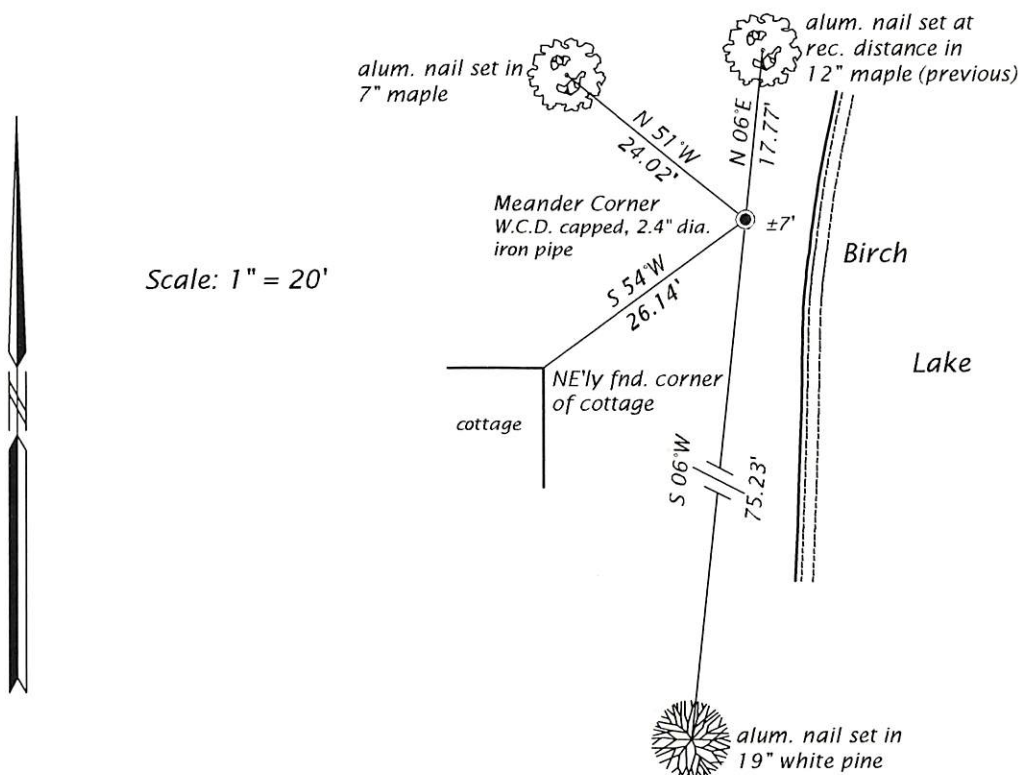
SEE PREVIOUS U.S.P.L.S. MONUMENT  
RECORD DATED JUNE 2, 1989.

(f)(g)(h) DESCRIPTION OF MONUMENT FOUND AT THIS CORNER AND IF IT WAS ACCEPTED, STATE ALL EVIDENCE (MATERIAL, TESTIMONIAL, OCCUPATIONAL, PLATS, RECORD, OTHER MONUMENTS) USED AS A BASIS FOR ESTABLISHING LOCATION. IF NOT ACCEPTED OR IF NOTHING WAS FOUND, STATE EVIDENCE USED AS BASIS FOR ESTABLISHING LOCATION. IF REESTABLISHED THROUGH LOST CORNER PROPORTIONATE METHODS, INDICATE ALL MONUMENTS, DISTANCES AND DIRECTIONS USED TO ESTABLISH. INDICATE TYPE OF MONUMENT AND SIGN POST FOUND OR SET.

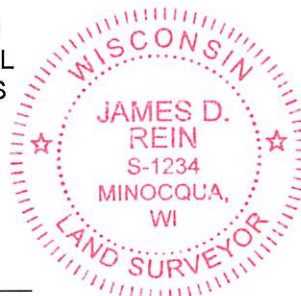
This is a perpetuation of a previous U.S.P.L.S. Monument Record by James D. Rein, RLS, dated June 2, 1989, and filed in the office of the Oneida County Register of Deeds. A complete history of the corner can be found on the previous monument record. I accept the previous location as a true and faithful perpetuation or reestablishment of the original corner location and further perpetuate it as follows.

December 24, 2020 - James D. Rein, P.L.S. No. S-1234, we found, and I accepted the W.C.D. meander corner shown on my previous Monument Record dated June 2, 1989. The northeasterly maple bearing tree was the only remaining reference. See below for updated reference ties.

(c)(d)(e) PLAN VIEW OF CORNER WITH TIES TO AT LEAST 4 WITNESS MONUMENTS. IF IN DISAGREEMENT WITH PREVIOUSLY ESTABLISHED CORNER, SHOW THE DISTANCE BETWEEN THE TWO CORNER AND ALSO INDICATE THE TIES TO THE DISPUTED CORNER.



(i) I, JAMES D. REIN, PROFESSIONAL LAND SURVEYOR NO. S-1234 HEREBY CERTIFY THAT THE CORNER LOCATION ON THIS RECORD WAS DETERMINED BY ME OR UNDER MY DIRECTION AND CONTROL AND THAT THIS U.S. PUBLIC LAND SURVEY MONUMENT RECORD IS CORRECT AND COMPLETE TO THE BEST OF MY KNOWLEDGE AND BELIEF.



*[Handwritten Signature]*  
SIGNATURE

1-06-21  
DATE

INDEX NO. A 2-3  
3807310022