

CERTIFIED LAND CORNER RESTORATION

State of Wisconsin }
County of Oneida } ss.

we I, Gerald B. Inman, do hereby certify that on the 12th day of June, 19 81, ~~found~~ evidence of the West 1/4 corner of Section 33 Township 38N, Range 7E, Fourth Principal Meridian, as described hereon; and that ~~from this evidence~~ ~~we~~ ~~established~~ ~~a new monument and~~ accessories as described hereon to perpetuate the original location of this corner:

Description of original monument and accessories and subsequent restorations:

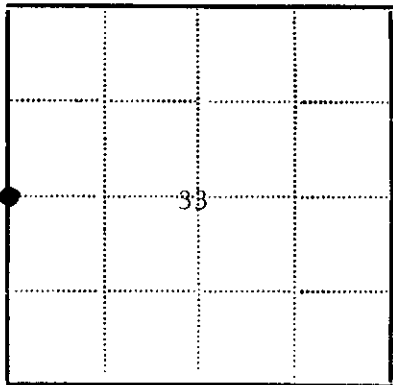
- Wood Post
- 10" Aspen, N28°E, 10 links
- 10" Aspen, N85°W, 13 links

Description of corner ~~evidence~~ found:

- W.C.D. brass capped iron pipe

Description of ~~monument and~~ accessories ~~we~~ established to perpetuate the location of this corner:

- W.C.D. brass capped iron pipe
- 10" Oak N62°W, 13.2 feet
- 6" White Birch S81°E, 18.2 feet
- 14" Norway Pine S32°E, 43.3 feet



● - Corner monument restored
□ -

~~Resident~~ witnesses Robert W. Conner, Jr.

Dated at Minocqua Wisconsin, this 12th day of June 19 81.

Signature *Gerald B. Inman* Title R.L.S.
(County Surveyor, Registered Land Surveyor, or other duly authorized official)

Surveyors Registration No. S-891

Office of Register of Deeds County of Oneida

I hereby certify that the within instrument was filed in this office for record on the 11th day of June 19 81, and was filed in Book No. Page No. of County Records.

Signature *Doris Verage Kuehn* Title Register of Deeds
Cynthia A. Pias, Deputy

Township, Range, Section, Index No., Page No.

3807322000

6-X

U.S. PUBLIC LAND SURVEY MONUMENT RECORD

REGISTER OF DEEDS OFFICE
ONEIDA COUNTY
FILED

JAN 19 2022

Note: This form is intended and designed to fulfill all requirements of the Wisconsin Administrative Code, Chapter A-E 7.08 U.S. Public Land Monument Record (3)(a)(b)(c)(d)(e)(f)(g)(h)(i). An additional sheet may be added if necessary to conform with said requirements.

KYLE J. FRANSON
REGISTER OF DEEDS

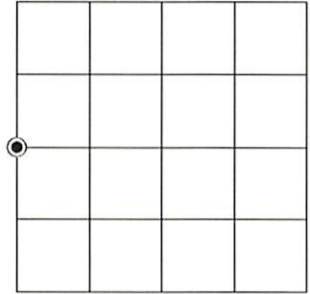
(a) CORNER LOCATION:

West Corner of Section 33
Township 38 North
Range 7 East
Town of Lake Tomahawk
County of Oneida

North:
East:
Datum:
GNSS Method:
GNSS Control:

(RECORDING AREA)

SECTION 33



(b) HISTORY OF ORIGINAL CORNER ESTABLISHMENT

Original Surveyor:
Date of Survey: Commenced
Completed
Original B.T.'S

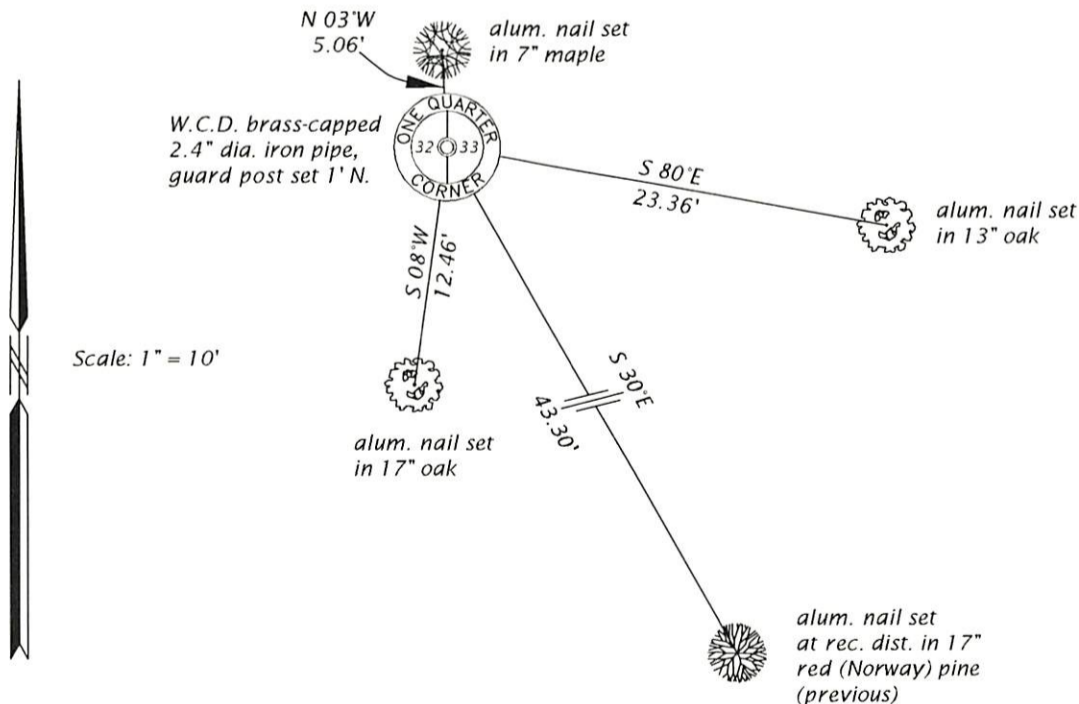
SEE PREVIOUS U.S.P.L.S. MONUMENT
RECORD DATED JUNE 12, 1981

(f)(g)(h) DESCRIPTION OF MONUMENT FOUND AT THIS CORNER AND IF IT WAS ACCEPTED, STATE ALL EVIDENCE (MATERIAL, TESTIMONIAL, OCCUPATIONAL, PLATS, RECORD, OTHER MONUMENTS) USED AS A BASIS FOR ESTABLISHING LOCATION. IF NOT ACCEPTED OR IF NOTHING WAS FOUND, STATE EVIDENCE USED AS BASIS FOR ESTABLISHING LOCATION. IF REESTABLISHED THROUGH LOST CORNER PROPORTIONATE METHODS, INDICATE ALL MONUMENTS, DISTANCES AND DIRECTIONS USED TO ESTABLISH. INDICATE TYPE OF MONUMENT AND SIGN POST FOUND OR SET.

This is a perpetuation of a previous U.S.P.L.S. Monument Record by Gerald B. Inman, RLS, dated June 12, 1981, and filed in the office of the Oneida County Register of Deeds. A complete history of the corner can be found on the previous monument record. I accept the previous location as a true and faithful perpetuation or reestablishment of the original corner location and further perpetuate it as follows.

December 7, 2021: James D. Rein, P.L.S. No. 1234, we found and I accepted the W.C.D. brass-capped iron pipe shown on the previous Monument Record. The previous white birch and oak bearing trees are now gone. See below for updated reference ties.

(c)(d)(e) PLAN VIEW OF CORNER WITH TIES TO AT LEAST 4 WITNESS MONUMENTS. IF IN DISAGREEMENT WITH PREVIOUSLY ESTABLISHED CORNER, SHOW THE DISTANCE BETWEEN THE TWO CORNERS AND ALSO INDICATE THE TIES TO THE DISPUTED CORNER.



(i) I, JAMES D. REIN, PROFESSIONAL LAND SURVEYOR NO. S-1234 HEREBY CERTIFY THAT THE CORNER LOCATION ON THIS RECORD WAS DETERMINED BY ME OR UNDER MY DIRECTION AND CONTROL AND THAT THIS U.S. PUBLIC LAND SURVEY MONUMENT RECORD IS CORRECT AND COMPLETE TO THE BEST OF MY KNOWLEDGE AND BELIEF.

James D. Rein

1-07-22

SIGNATURE

DATE



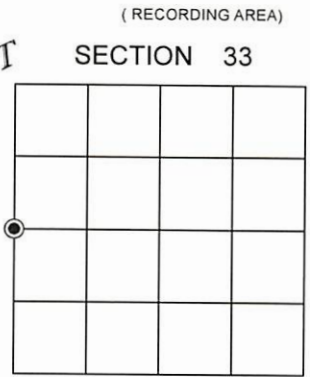
INDEX NO. X-9
3807322000

U.S. PUBLIC LAND SURVEY MONUMENT RECORD ADDENDUM

Note: This form is intended and designed to fulfill all requirements of the Wisconsin Administrative Code, Chapter A-E 7.08 U.S. Public Land Monument Record (3)(a)(b)(c)(d)(e)(f)(g)(h)(i). An additional sheet may be added if necessary to conform with said requirements.

(a) CORNER LOCATION:
West Corner of Section 33
Township 38 North
Range 7 East
Town of Lake Tomahawk
County of Oneida

North:
East:
Datum:
GNSS Method:
GNSS Control:



(b) HISTORY OF ORIGINAL CORNER ESTABLISHMENT

Original Surveyor:
Date of Survey: Commenced
Completed
Original B.T.'S

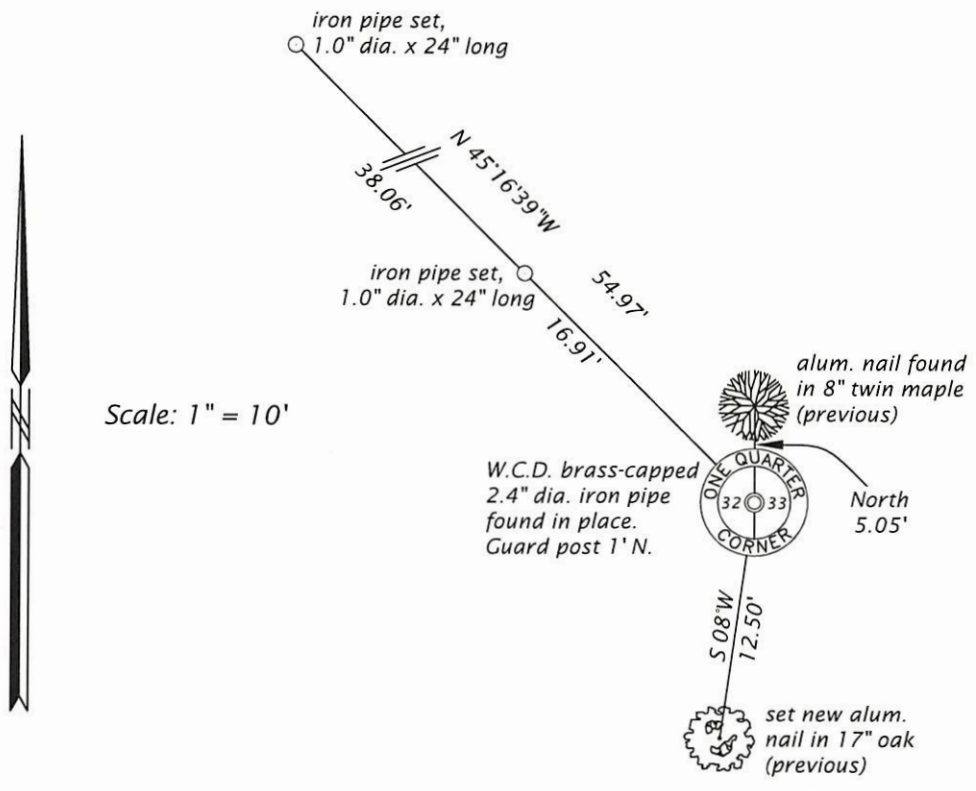
SEE PREVIOUS U.S.P.L.S. MONUMENT
RECORD DATED JANUARY 7, 2022

(f)(g)(h) DESCRIPTION OF MONUMENT FOUND AT THIS CORNER AND IF IT WAS ACCEPTED, STATE ALL EVIDENCE (MATERIAL, TESTIMONIAL, OCCUPATIONAL, PLATS, RECORD, OTHER MONUMENTS) USED AS A BASIS FOR ESTABLISHING LOCATION. IF NOT ACCEPTED OR IF NOTHING WAS FOUND, STATE EVIDENCE USED AS BASIS FOR ESTABLISHING LOCATION. IF REESTABLISHED THROUGH LOST CORNER PROPORTIONATE METHODS, INDICATE ALL MONUMENTS, DISTANCES AND DIRECTIONS USED TO ESTABLISH. INDICATE TYPE OF MONUMENT AND SIGN POST FOUND OR SET.

This is a perpetuation of a previous U.S.P.L.S. Monument Record by James D. Rein, PLS, dated January 7, 2022, and filed in the office of the Oneida County Register of Deeds. A complete history of the corner can be found on the previous monument record. I accept the previous location as a true and faithful perpetuation or reestablishment of the original corner location and further perpetuate it as follows.

March 22, 2024 - James D. Rein, P.L.S. No. 1234. We found, and I accepted, the W.C.D. brass-capped iron pipe shown on the previous Monument Record. The previous easterly and southeasterly bearing trees are now gone. See below for updated referencens.

(c)(d)(e) PLAN VIEW OF CORNER WITH TIES TO AT LEAST 4 WITNESS MONUMENTS. IF IN DISAGREEMENT WITH PREVIOUSLY ESTABLISHED CORNER, SHOW THE DISTANCE BETWEEN THE TWO CORNERS AND ALSO INDICATE THE TIES TO THE DISPUTED CORNER.



(i) I, JAMES D. REIN, PROFESSIONAL LAND SURVEYOR NO. S-1234 HEREBY CERTIFY THAT THE CORNER LOCATION ON THIS RECORD WAS DETERMINED BY ME OR UNDER MY DIRECTION AND CONTROL AND THAT THIS U.S. PUBLIC LAND SURVEY MONUMENT RECORD IS CORRECT AND COMPLETE TO THE BEST OF MY KNOWLEDGE AND BELIEF.

James D. Rein
SIGNATURE

1-11-25
DATE

