

Stock No. 26273

# U. S. PUBLIC LAND SURVEY MONUMENT RECORD

**INSTRUCTIONS :**

This record shall show the location of the corner and shall include all of the following nine elements (a through i).

(a) Identify the corner by reference to the U.S. public land survey system.

September, 1860 - Alfred Millard, U.S. Deputy Surveyor established corner, monumented by a post on survey between T37N and T38N.

Original bearing trees:

- W.Pine 36" S33°E, 25 links (16.50 feet)
- Sugar 6" S67°W, 24 links (15.84 feet)
- Maple 9" N13°W, 30 links (19.80 feet)
- W.Birch 12" N61°E, 26 links (17.16 feet)

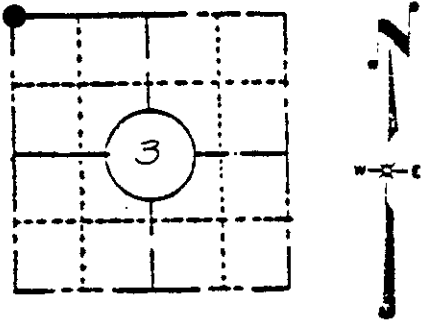
September 21st, 1936 - Vernon Maine, Oneida County Surveyor set official iron pipe, brass cap, stamped, identified by original B.T. viz White Pine S33°E, 25 links.

Made new facing scribed O.B.T.

Made new B.T.s viz:

- W.Pine 6" S59°W, .94 (62.04 feet)
- Norway Pine stp. 20" S9°E, .63 (41.58 feet)

Section 3  
T37N, R7E



**LOCATION SKETCH**

(Location of landmark indicated by "●")

(b) Describe any record evidence, monument evidence, occupational evidence, testimonial evidence or any other material evidence you considered, and whether the monument was found or placed.

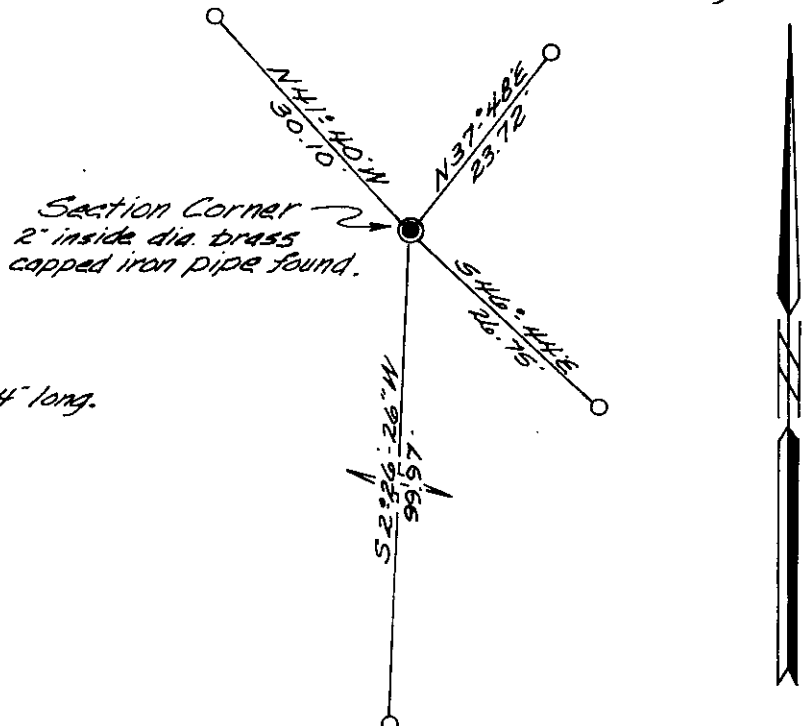
Found a 2" inside diameter iron pipe with a brass cap extending two feet above ground. Cap is marked to identify corner and dated 1937. The corner is witnessed by the following BT's :

- +/- 36" Pine Stump S26°E, 16.5 feet to face. No evidence of face remaining.
- 24" Red Pine stump S4°E, 41.7 feet to center, marked "S3 BT"
- 6" Sugar Maple, N49°W, 14.0 feet to center, face open and marked.

(c) In the plan view drawing below, provide reference ties to at least 4 witness monuments, or, if the location is within a municipality, to at least 2 witness monuments. (Witness monuments shall be made of concrete, natural stone, iron or other equally durable material, except wood.) Describe witness monuments.

*Bearings assumed referenced to the east line of the NW 1/4 of Section 3 bearing 50°33'18"W*

(d) Show a plan view drawing depicting the relevant monuments and reference ties which is sufficient in detail to enable accurate relocation of the corner monument if the corner monument is disturbed. Indicate north.



Scale 1" = 20'

○ = Iron pipe set, 3/4" dia. x 24" long.

Compared with all record data and accepted as correct.

Robert H. Vinal 18 Jan 84  
Oneida County Surveyor date

A-13

3807330000

(e) Describe any material discrepancy between the location of the corner as restored or reestablished and the location of that corner as previously restored or reestablished by distance and direction. Show the discrepancy on the plan view drawing under (d), above. Show the distances between the corner as previously restored or reestablished and (1) the corner as restored or reestablished, and (2) to at least 2 of the witness monuments shown on the drawing in (d), above.

No material discrepancy concerning this corner position was noted.

(f) Was the corner restored through acceptance of (1) an obliterated evidence location, or, (2) a found perpetuated location?

The corner position was restored through acceptance of a found perpetuated location as described on the reverse side of this form.

(g&h) Was the corner reestablished through lost corner proportionate methods? If so, show the method, including the directions and distances to other public land survey corners used as evidence or used for proportioning in determining the corner location?

The corner position was not restored through lost corner proportionate methods.

REGISTERS OFFICE }  
Oncida County, Wis. }

Received for Record the 18th day of  
January A.D. 1984 at  
10:00 o'clock A M. and recorded in

Vol. \_\_\_\_\_ on page \_\_\_\_\_  
Louis Verage Kuehn  
Register

(i) I, JAMES D. REIN  
(type or print name) certify that the corner location shown  
on this record was determined by me or under my direction and  
control and that this U.S. Public Land Survey Monument Record  
is correct and complete to the best of my knowledge and belief.

James D Rein  
Signature

October 18th, 1983  
Date

