

# U.S. PUBLIC LAND SURVEY MONUMENT RECORD

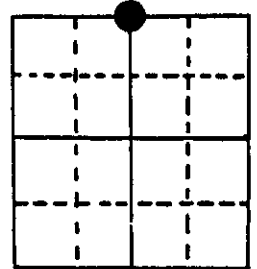
Note: This form is intended and designed to fulfill all requirements of Wisconsin Administrative Code, Chapter A-E 5.02, U.S. Public Land Survey Monument Record (3) (a) (b) (c) (d) (e) (f) (g) (h) (i). An additional sheet may be added if necessary to conform with said requirements.

(a) Corner location: Township 37 North

Range 7 East

Town Cassian

County Oneida



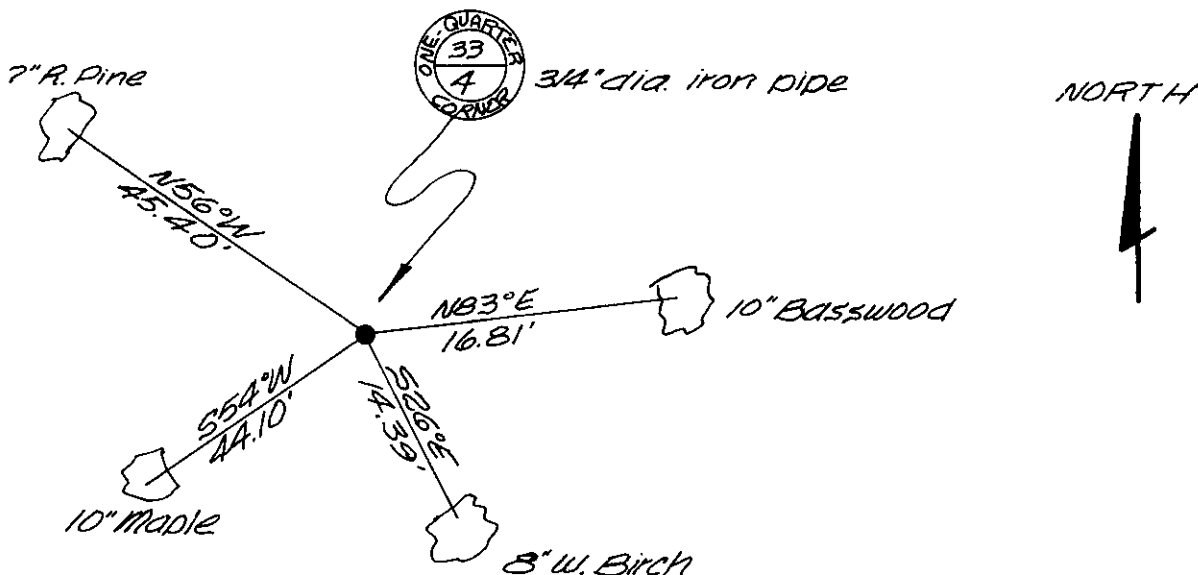
Section 4

(b) (f) (g) (h) Description of monument found at this corner and if it was accepted, state all evidence (material, testimonial, occupational, plats, records, other monuments) used as a basis for accepting. If not accepted or if nothing was found, state evidence used as basis for establishing location. If reestablished through lost corner proportionate methods, indicate all monuments, distances and directions used to establish.

September 1860 - Alfred Millard, U.S. Deputy Surveyor - Set quarter section post. Original bearing trees: Maple 9 S63°W, 11 links  
Y. Pine 9 N67°E 4 links

February 1986 - Jerome N. Kraemer finds 3/4" dia. iron pipe 3" below ground level in east shoulder of private driveway. Found existing bearing trees: 10" Basswood N83°E, 16.81 feet  
8" W. Birch S26°E, 14.39 feet  
 Established new bearing trees as shown in plan view below.  
 Distances measured to nail in base of bearing tree.

(c) (d) (e) Plan view of corner with ties to at least 4 witness monuments. If in disagreement with previously established corner, show the distances between the two corners and also indicate the ties to the disputed corner.



(i) I, Jerome N. Kraemer, Reg. Land Surveyor  
 (type or print name) certify that the corner location on this record was determined by me or under my direction and control and that this U.S. Public Land Survey Monument Record is correct and complete to the best of my knowledge and belief.

Jerome N. Kraemer February 25th, 1986  
 Signature Date



Index No. A-11

3807330020