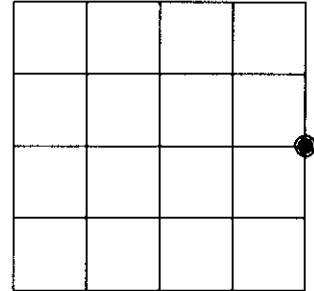


U.S. PUBLIC LAND SURVEY MONUMENT RECORD

Note: This form is intended and designed to fulfill all requirements of Wisconsin Administrative Code, Chapter A-E 7.08 U.S. Public Land Survey Monument Record (3)(a)(b)(c)(d)(e)(f)(g)(h)(i). An additional sheet may be added if necessary to conform with said requirements.

(a) CORNER LOCATION:

East 1/4 corner of Sec. 33 State Plane Coordinates
 Township 38 North X _____
 Range 7 East Y _____
 Town/~~City/Village~~ of Lake Tomahawk Datum Base _____
 County of Oneida



(b) HISTORY OF ORIGINAL CORNER ESTABLISHMENT

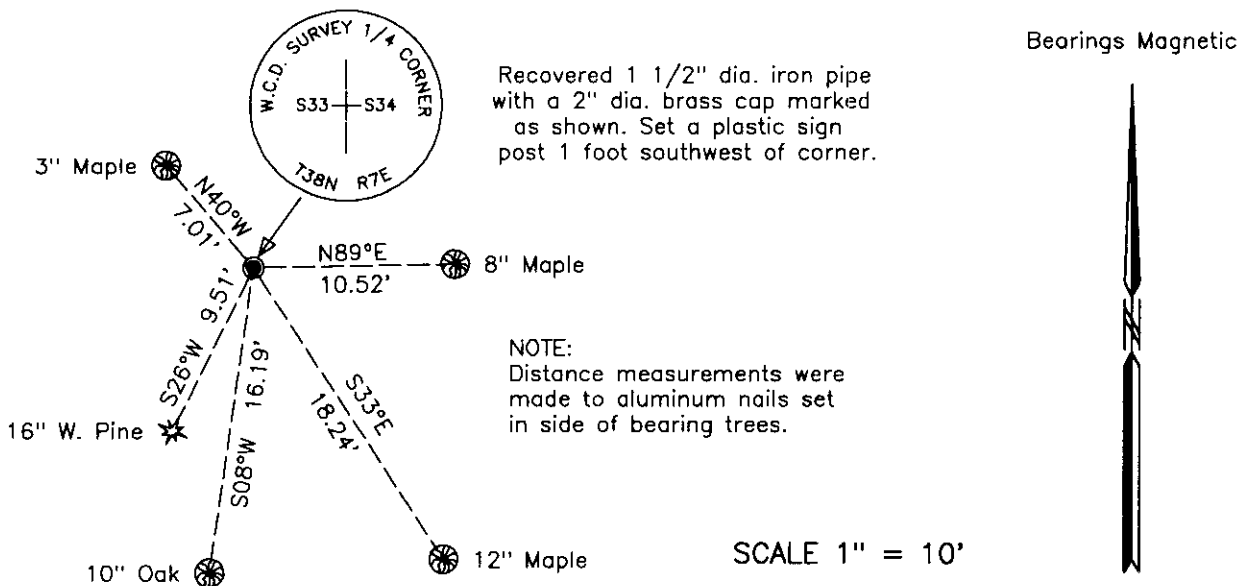
Original Surveyor: Alexander Anderson Original B.T.'S SECTION 33
 Date of Survey: Commenced August 15, 1863 Maple 10" N74°W, 22 links
 Completed August 27, 1863 Sugar 6" N87°E, 10 links.

(f)(g)(h) Description of monument found at this corner and if it was accepted, state all evidence (material, testimonial, occupational, plats, records, other monuments) used as a basis for establishing location. If not accepted or if nothing was found, state evidence used as basis for establishing location. If reestablished through lost corner proportionate methods, indicate all monuments, distances and directions used to establish. Indicate type of monument and sign post found or set.

1968 – (Wood – Berndt – Gibson) for W.C.D., set a W.C.D. brass capped 2" dia. iron pipe. Referenced by the following bearing trees: 12" W. Pine S25°W, 9.40 feet; and by a 6" Maple S81°E, 18.81 feet.

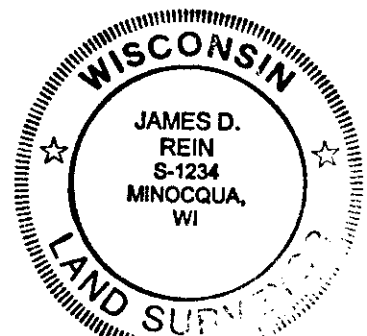
June 11, 1999 – James D. Rein, R.L.S. No. 1234, recovered a 1 1/2" dia. iron pipe with a W.C.D. 2" dia. brass cap, referenced by the W.C.D. W. Pine bearing tree, as shown in plan view. Set a plastic sign post 1 foot southwest of corner monument and made new bearing trees as shown in plan view.

(c)(d)(e) Plan view of corner with ties to at least 4 witness monuments. If in disagreement with previously established corner, show the distance between the two corners and also indicate the ties to the disputed corner.



(i) I, James D. Rein, Registered Land Surveyor No. 1234, hereby certify that the corner location on this record was determined by me or under my direction and control and that this U.S. Public Land Survey Monument Record is correct and complete to the best of my knowledge and belief.

James D. Rein March 29, 2000
 Signature Date



INDEX NO. X.13

3807 33 2000