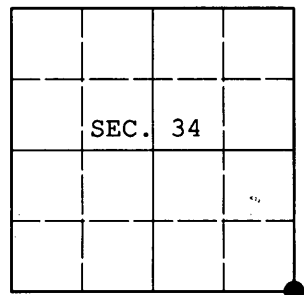


U.S. PUBLIC LAND SURVEY MONUMENT RECORD

Note: This form is intended and designed to fulfill all requirements of Wisconsin Administrative Code, Chapter A-E 7.08 U.S. Public Land Survey Monument Record (3) (a) (b) (c) (d) (e) (f) (g) (h) (i). An additional sheet may be added if necessary to conform with said requirements.

(a) CORNER LOCATION: WISCRS (Oneida County)
 Cor. of Secs. 2, 3, 34 & 35 N: 199,230.894 USft
 Township 37 & 38 North E: 218,273.246 USft
 Range 7 East of the 4th P.M. Datum: NAD 1983(2007)
 Town of Lake Tomahawk County of Oneida



(b) HISTORY OF ORIGINAL CORNER ESTABLISHMENT

Original Surveyor: Alfred Millard Original Accessories:
 Date of Survey: Commenced: Aug., 1860 aspen 12" S2°W, 8 lks.
 Completed: Sept., 1860 aspen 12" N66°W, 15 lks.
 aspen 14" N32°E, 32 lks.
 w. pine 8" S56°E, 28 lks.

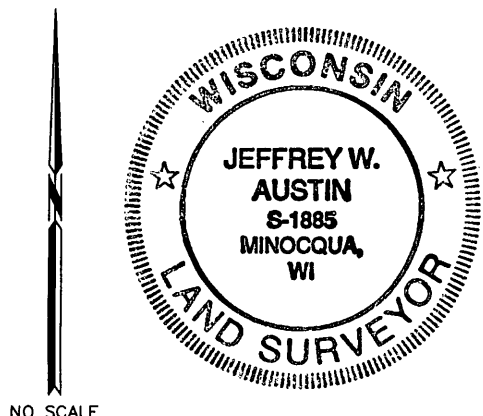
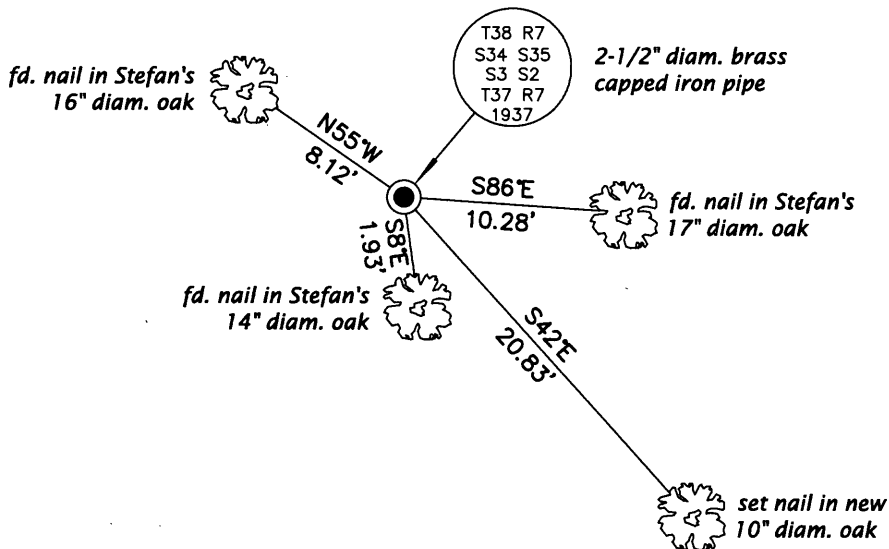
(b) (f) (g) (h) Description of monument found at this corner and if it was accepted, state all evidence (material, testimonial, occupational, plats, records, other monuments) used as a basis for accepting. If not accepted or if nothing was found, state evidence used as basis for establishing location. If re-established through lost corner proportionate methods, indicate all monuments, distances and directions used to establish. Indicate type of monument and sign post found or set.

NOTE: This is a perpetuation of a previous USPLS Monument Record by Milo E. Stefan, RLS dated February 16, 1989 and filed in the office of the Oneida County Register of Deeds. A complete history of the corner can be found on the previous monument record. I accept the previous location as a true and faithful perpetuation or reestablishment of the original corner location and further perpetuate it as follows.

June 26, 2013: I found and accepted Stefan's monument, a 2-1/2" diam. iron pipe with 2-1/2" diam. brass cap projecting 30" above the ground surface. It is apparent that the previous monument record and GPS observation were performed with the monument substantially out of plumb. I plumbed the monument and laid a collar of stone around the base. There are no marks remaining on the boulder mentioned by Stefan. I found or established accessories as shown below and found a white plastic sign post bearing Northwest, 1 ft. dist.

The coordinates shown were derived from offset static GPS observations referenced to a VRS control point generated by the WISCRS network.

(c) (d) (e) Plan view of corner with ties to at least 4 witness monuments. If in disagreement with previously established corner, show the distances between the two corners and also indicate the ties to the disputed.

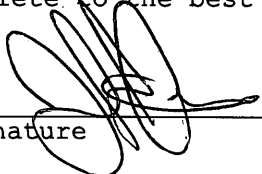


REGISTER OF DEEDS OFFICE
 ONEIDA COUNTY
 FILED

JUL 17 2013

AT _____ O'CLOCK _____ M
 KYLE J. FRANSON
 REGISTER OF DEEDS

(i) I, Jeffrey W. Austin, Registered Land Surveyor No. S-1885, hereby certify that the corner location on this record was determined by me or under my direction and control and that this U.S. Public Land Survey Monument Record is correct and complete to the best of my knowledge and belief.


 Signature

July 1, 2013
 Date

