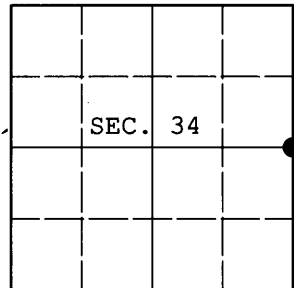


U.S. PUBLIC LAND SURVEY MONUMENT RECORD

Note: This form is intended and designed to fulfill all requirements of Wisconsin Administrative Code, Chapter A-E 7.08 U.S. Public Land Survey Monument Record (3) (a) (b) (c) (d) (e) (f) (g) (h) (i). An additional sheet may be added if necessary to conform with said requirements.

(a) CORNER LOCATION: WISCORS (Oneida County)
 1/4 Cor. of Secs. 34 & 35 N: 201,824.883 USft
 Township 38 North E: 218,283.318 USft
 Range 7 East of the 4th P.M. Datum: NAD 1983(2007)
 Town of Lake Tomahawk. County of Oneida



(b) HISTORY OF ORIGINAL CORNER ESTABLISHMENT

Original Surveyor: Alexander Anderson Original Accessories:
 Date of Survey: Commenced: Aug. 15, 1863 y. pine 12" S35°E, 11 lks.
 Completed: Aug. 27, 1863 y. pine 12" S38°W, 11 lks.

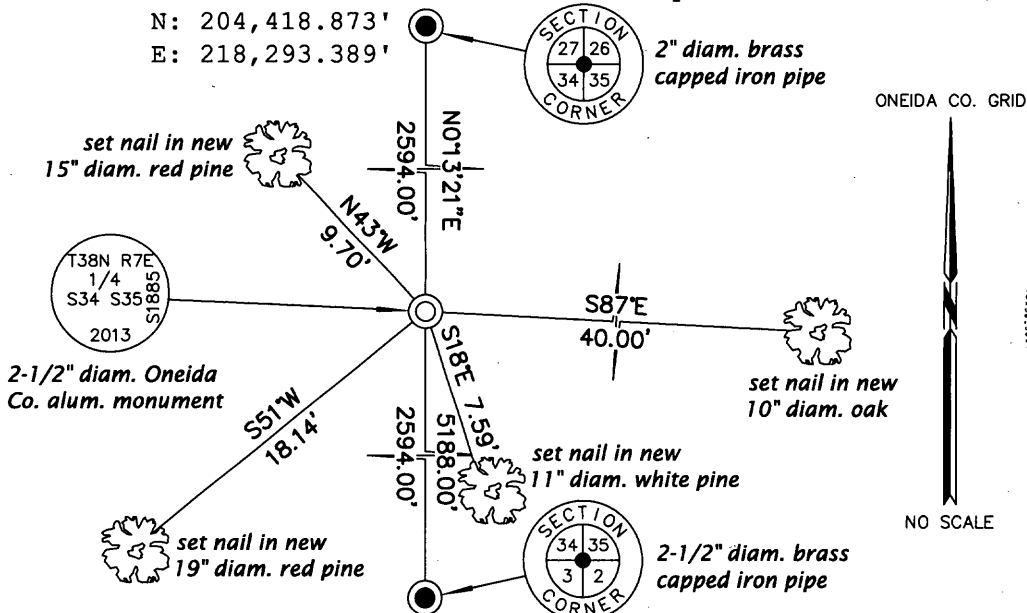
(b) (f) (g) (h) Description of monument found at this corner and if it was accepted, state all evidence (material, testimonial, occupational, plats, records, other monuments) used as a basis for accepting. If not accepted or if nothing was found, state evidence used as basis for establishing location. If re-established through lost corner proportionate methods, indicate all monuments, distances and directions used to establish. Indicate type of monument and sign post found or set.

August, 1890: In Dorr/Vaughan book, on page 176 and 177, Dorr indicates he recovered this corner while working in sections 34 and 35. Unfortunately, he does not indicate what was found at the corner point. During this work, he also established the South 1/16 corner common to sections 34 and 35.

January 16, 2013: I was unable to recover any previous survey evidence at the corner location. I was also unable to recover evidence of Dorr's South 1/16 corner. After several attempts to position this corner based on Dorr's measurements from the East and West, it became apparent that his corner location and/or measurements are incorrect. The location of McNaughton Lake confirms that the original section line was for the most part straight, indicating that Dorr's distance to 3807352000 is likely incorrect. It's apparent that WCD/DNR came to the same conclusion, as they proportioned both the North and West quarter-section corners in section 34, ignoring Dorr's work in that section. As a result, I regard the corner lost and position it based on single proportionate measure. At the corner point, I set a 2-1/2" diam., 30" long aluminum pipe with 3-1/4" diam. Oneida Co. aluminum cap projecting 4" above the ground surface. I established accessories as shown below and set a white plastic sign post bearing Northeast, 1-1/2 ft. dist.

The coordinates of 3807342000 and 3807270000 were derived from offset static GPS observations referenced to a VRS control point generated by the WISCORS network.

(c) (d) (e) Plan view of corner with ties to at least 4 witness monuments. If in disagreement with previously established corner, show the distances between the two corners and also indicate the ties to the disputed.



REGISTER OF DEEDS OFFICE
 ONEIDA COUNTY
 FILED

MAR 11 2013

(i) I, Jeffrey W. Austin, Registered Land Surveyor No. S-1885, hereby certify that the corner location on this record was determined by me or under my direction and control and that this U.S. Public Land Survey Monument Record is correct and complete to the best of my knowledge and belief.

[Handwritten Signature]
 Signature

FEB. 26, 2013
 Date

AT _____ O'CLOCK _____ M
 KYLE J. FRANSON
 REGISTER OF DEEDS