

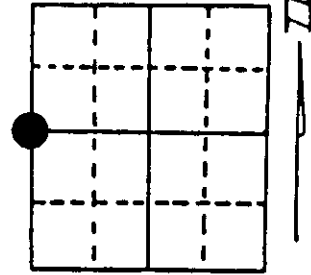
U.S. PUBLIC LAND SURVEY MONUMENT RECORD

Note: This form is intended and designed to fulfill all requirements of Wisconsin Administrative Code, Chapter A-E 7.08 U.S. Public Land Survey Monument Record (3) (a) (b) (c) (d) (e) (f) (g) (h) (i). An additional sheet may be added if necessary to conform with said requirements.

(a) Corner location: Township 38 North
 Range 7 East/West

Town/City/Village Lake Tomahawk

County Oneida



Section 36

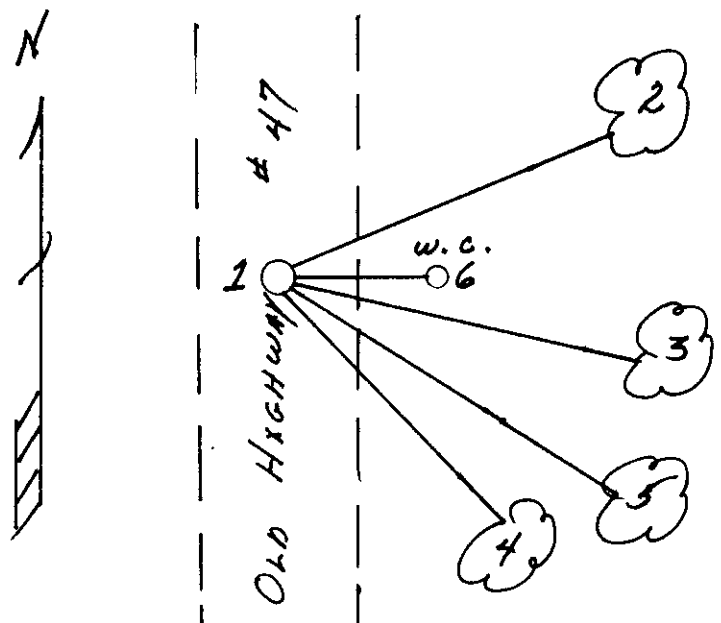
(b) (f) (g) (h) Description of monument found at this corner and if it was accepted, state all evidence (material, testimonial, occupational, plats, records, other monuments) used as a basis for accepting. If not accepted or if nothing was found, state evidence used as basis for establishing location. If reestablished through lost corner proportionate methods, indicate all monuments, distances and directions used to establish. Indicate type of monument found or set and sign post.

- 1863 - Joseph H. Jenkins established this corner and set a wood post with two BTs:
 9" Tamarack, N44°E, 36 Links (23.76') 9" Tamarack, N68½°W, 21 Links (13.86')
- 1930-s - Vern Maine set a Witness Corner East of Quarter Corner that falls in roadway.
- 5/29/1996 - Milo E. Stefan found 2" x 60" Iron Pipe with Brass Cap broken off and badly damaged. A 12" Tamarack BT bears S80°E, 33.48'.
 I believe this W.C. is to the corner position that bears West, 16 1/2'.
 I replaced the iron pipe with an aluminum monument, took new BTs and set a railroad spike for the Quarter Corner.

(c) (d) (e) Plan view of corner with ties to at least 4 witness monuments. If in disagreement with previously established corner, show the distances between the two corners and also indicate the ties to the disputed corner.

- 1) Railroad Spike.
- 2) 8" Tamarack, N74°E, 57.81'
- 3) 10" Tamarack, S78°E, 63.10'
- 4) 6" Black Spruce, S64°E, 33.48'
- *5) 12" Tamarack, S80°E, 53.84'
- 6) 2" x 30" Aluminum monument (W.C.) East, 16.50'
- 7) Plastic Sign Post, East, 17.50'

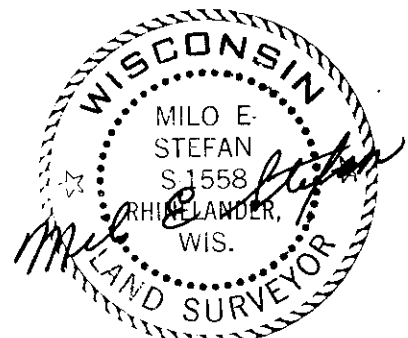
Distances from nail in side of BTs
 Stump blaze scribed "BT"
 BT tags on face of each BT



(i) I, Milo E. Stefan
 (type or print name) certify that the corner location on this record was determined by me or under my direction and control and that this U.S. Public Land Survey Monument Record is correct and complete to the best of my knowledge and belief.

Milo E. Stefan
 Signature

June 19, 1996
 Date



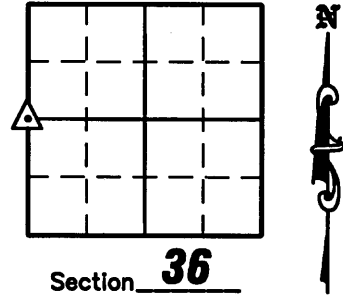
Index No. X-21

3807352000
 Stamp

U.S. PUBLIC LAND SURVEY MONUMENT RECORD

NOTE: This form is intended and designed to fulfill all requirements of Wisconsin Administrative Code, Chapter A-E 7 .08 U.S. Public Land Survey Monument Record (3)(a)(b)(c)(d)(e)(f)(g)(h)(i). An additional sheet may be added if necessary to conform with said requirements.

(a) Corner location: Township 38 North
 Range 7 East
 Town of Lake Tomahawk
 County of Oneida



(b)(f)(g)(h) Description of monument found at this corner and if it was accepted, state all evidence (material, testimonial, occupation, plats, records, other monuments) used as a basis for accepting. If not accepted or if nothing was found, state evidence used as a basis for establishing location. If reestablished through lost corner proportionate methods, indicate all monuments, distances and directions used to establish. Indicate type of monument found or set and sign post.

1863 - Joseph H. Jenkins established this corner and set a wood post with two BT's: 9" Tamarack, N44°E, 36 lks. (23.76'); 9" Tamarack, N68-1/2°W, 21 lks. (13.86')

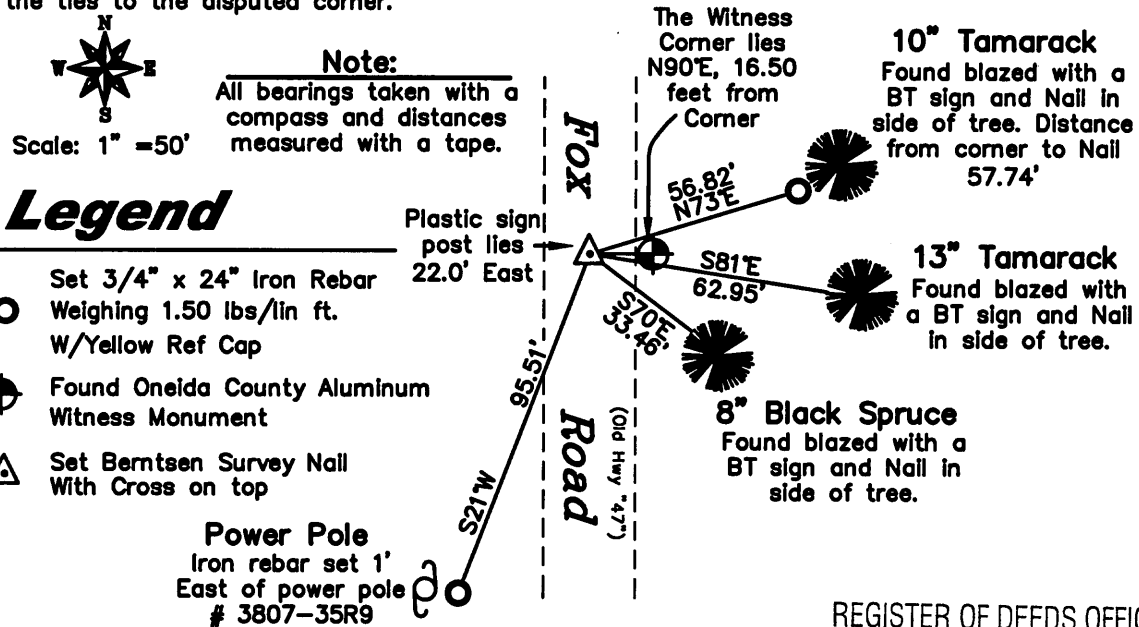
1930's - Vern Maine set Witness Corner East of Quarter Corner that falls in roadway.

May 29, 1996 - Milo E. Stefan found 2" by 60" iron pipe with brass cap broken off and badly damaged. A 12" Tamarack BT bears S80°E, 33.48 feet. I believe this W.C. is to the corner position that bears West, 16.5 feet. I replaced the iron pipe with an aluminum monument, took new BT's and set a railroad spike for the Quarter Corner.

June 27, 2008 - Due to road construction Nicolet Surveyors, Inc. was contacted by the Oneida County Land Information Office to preserve the location of this survey marker. Jonathan W. Dulin found a railroad spike in the centerline of Fox Road along with 3 bearing trees and an Oneida County Aluminum Witness Monument. We witnessed the corner as shown below.

November 7, 2008 - After road construction was complete we visited corner, checked the ties and set a Berntsen survey nail with cross on top.

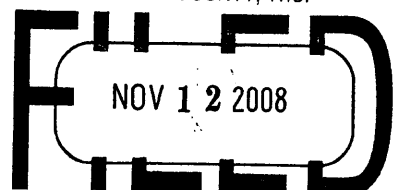
(c)(d)(e) Plan view of corner with ties to at least 4 witness monuments. If in disagreement with previously established corner, show the distances between the two corners and also indicate the ties to the disputed corner.



(i) I, Jonathan W. Dulin, certify that the corner location on this record was determined by me under my direction and control and that this U.S. Public Land Survey Monument is correct and complete to the best of my knowledge and belief.

Jonathan W. Dulin
 Signature
 JONATHAN W. DULIN
 S-2754
 RHINELANDER
 WISCONSIN
 LAND SURVEYOR
 11/7/08
 Date

REGISTER OF DEEDS OFFICE
 ONEIDA COUNTY, WIS.



At _____ O'Clock _____ M
 THOMAS H. LEIGHTON
 REGISTER OF DEEDS

3807352000

Index No. X-21