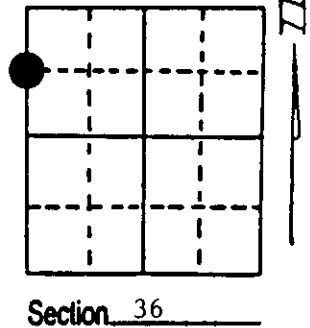


U.S. PUBLIC LAND SURVEY MONUMENT RECORD

Note: This form is intended and designed to fulfill all requirements of Wisconsin Administrative Code, Chapter A-E 7.08 U.S. Public Land Survey Monument Record (3) (a) (b) (c) (d) (e) (f) (g) (h) (i). An additional sheet may be added if necessary to conform with said requirements.

(a) Corner location: Township 38 North
 Range 7 East/West

Town/City/Village Lake Tomahawk
 County Oneida



Section 36

(b) (f) (g) (h) Description of monument found at this corner and if it was accepted, state all evidence (material, testimonial, occupational, plats, records, other monuments) used as a basis for accepting. If not accepted or if nothing was found, state evidence used as basis for establishing location. If reestablished through lost corner proportionate methods, indicate all monuments, distances and directions used to establish. Indicate type of monument found or set and sign post.

RIPCO - Set a Witness Corner 33.00' West of N 1/16 Corner.

5/29/1996 - Milo E. Stefan found RIPCO'S W.C. and a 16" Red Oak BT, N41°E, 76.51' with face overgrown.

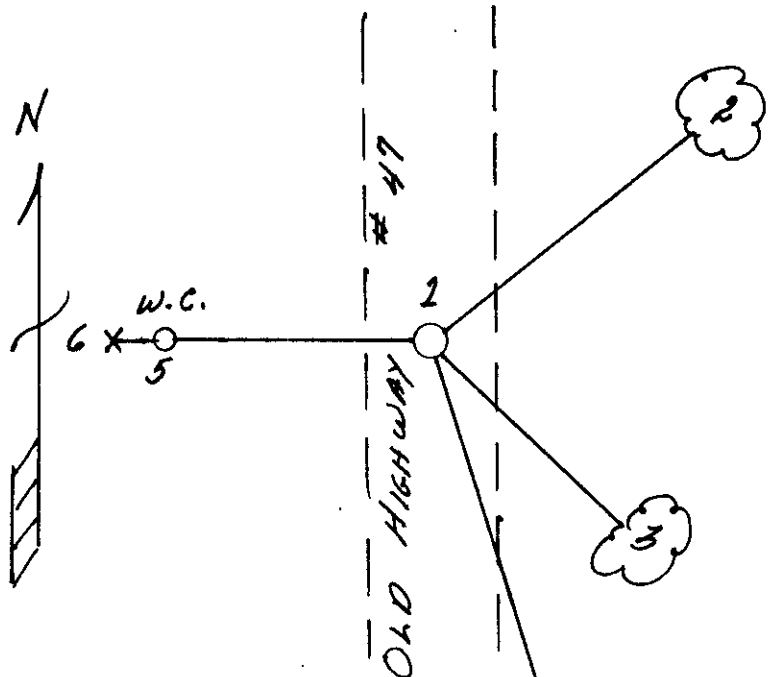
We set a railroad spike in blacktop and made new BTs.

This certificate is to perpetuate this W.C. by RIPCO. Its position should be tested prior to its use.

(c) (d) (e) Plan view of corner with ties to at least 4 witness monuments. If in disagreement with previously established corner, show the distances between the two corners and also indicate the ties to the disputed corner.

- 1) Railroad Spike.
- *2) 16" Red Oak, N41°E, 76.51'
- 3) 12" Red Pine, S62°E, 33.50'
- 4) 10" Red Pine, S33°E, 48.48'
- 5) 1" Iron Pipe/2" x 2" Brass Plate West, 33.00' (RIPCO W.C.)

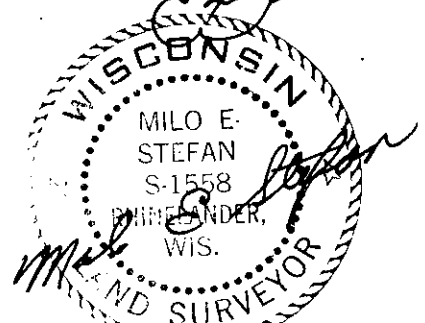
Distances from nail in side of BTs
 Stump blaze scribed "BT"
 BT tags on face of each BT
 * Mianes BT ?



(i) I, Milo E. Stefan
 (type or print name) certify that the corner location on this record was determined by me or under my direction and control and that this U.S. Public Land Survey Monument Record is correct and complete to the best of my knowledge and belief.

Milo E. Stefan
 Signature

June 19, 1996
 Date



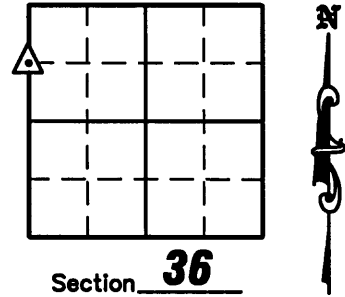
Stamp 3807 353000

Index No. M-21

U.S. PUBLIC LAND SURVEY MONUMENT RECORD

NOTE: This form is intended and designed to fulfill all requirements of Wisconsin Administrative Code, Chapter A-E 7 .08 U.S. Public Land Survey Monument Record (3)(a)(b)(c)(d)(e)(f)(g)(h)(i). An additional sheet may be added if necessary to conform with said requirements.

(a) Corner location: Township 38 North
 Range 7 East
 Town of Lake Tomahawk
 County of Oneida



(b)(f)(g)(h) Description of monument found at this corner and if it was accepted, state all evidence (material, testimonial, occupation, plats, records, other monuments) used as a basis for accepting. If not accepted or if nothing was found, state evidence used as a basis for establishing location. If reestablished through lost corner proportionate methods, indicate all monuments, distances and directions used to establish. Indicate type of monument found or set and sign post.

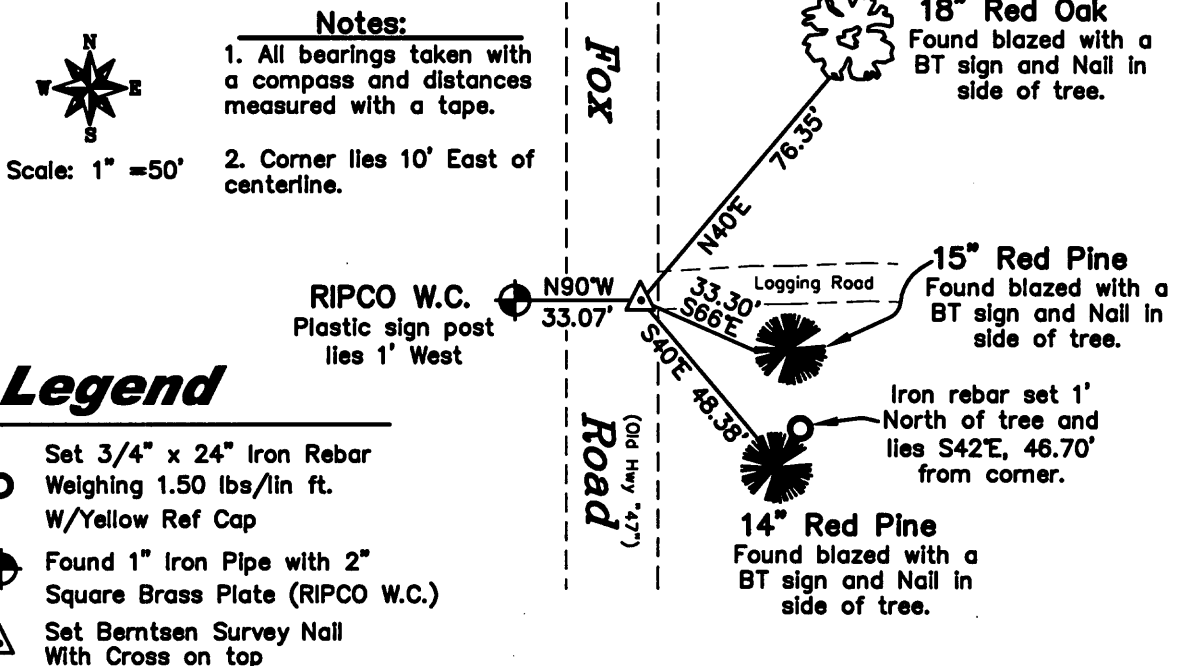
RIPCO - Set Witness Corner 33.00' West of N 1/16 Corner.

May 29, 1996 - Milo E. Stefan found RIPCO'S W.C. and a 16" Red Oak BT, N41°E, 76.51' with face overgrown. He set a railroad spike in blacktop and made two new BT's. This certificate is to perpetuate this W.C. by RIPCO. Its position should be tested prior to its use.

June 27, 2008 - Due to road construction Nicolet Surveyors, Inc. was contacted by the Oneida County Land Information Office to preserve the location of this survey marker. Jonathan W. Dulin found a railroad spike 10 feet East of the centerline of Fox Road along with 3 bearing trees and a 1" Iron pipe with 2" square brass plate (RIPCO W.C.). We witnessed the corner as shown below.

November 7, 2008 - After road construction was complete we visited corner, checked the ties and set a Berntsen survey nail with cross on top.

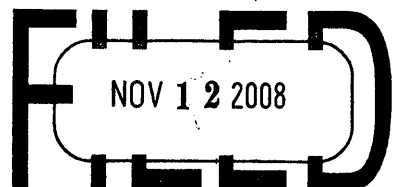
(c)(d)(e) Plan view of corner with ties to at least 4 witness monuments. If in disagreement with previously established corner, show the distances between the two corners and also indicate the ties to the disputed corner.



(i) I, Jonathan W. Dulin, certify that the corner location on this record was determined by me under my direction and control and that this U.S. Public Land Survey Monument is correct and complete to the best of my knowledge and belief.

Signature: Jonathan W. Dulin
 Date: 11/7/08

REGISTER OF DEEDS OFFICE
 ONEIDA COUNTY, WIS.



At _____ O'Clock _____ M
THOMAS H. LEIGHTON
 REGISTER OF DEEDS
 3807353000

Index No. W-21